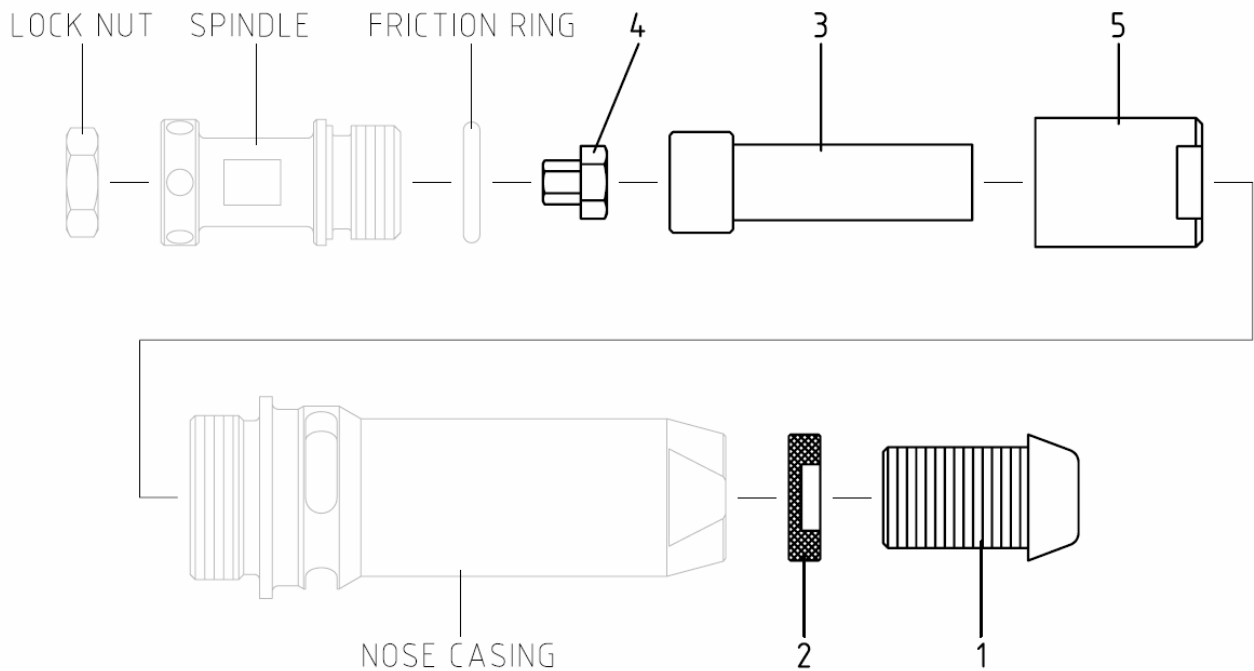


## 74200 Threaded Insert Power Tool Stud Nose Equipment Fitting Instructions

**IMPORTANT**

The nose assembly must be fitted before operating the tool.

### Nose Assembly



Items in grey are included in the Base Tool, part numbers can be found in the General Assembly of the Base Tool section of the 74200 Instruction Manual. Items in black make up the Nose Assembly. These parts will vary depending on Insert size. Refer to the Nose Assemblies section of the 74200 Instruction Manual.

### Selecting a Nose Assembly

INSERT SIZE	NOSE ASSEMBLY	ITEM 1 NOSE TIP	ITEM 2 LOCK NUT	ITEM 3 DRIVE SCREW	ITEM 4 DRIVE SHAFT	ITEM 5 REDUCING SLEEVE
M4	07559-03044	07559-03047	07555-00901	07559-03050	07555-01012	74200-12119 *
M5	07559-03045	07559-03048	07555-00901	07559-03051	07555-01012	74200-12119 *
M6	07559-03046	07559-03049	07555-00901	07559-03052	07555-01012	74200-12119 *
M8	07559-03039	07559-03040	07555-00901	07559-03041	07555-01012	74200-12119 *
M10	74200-12222 **	74200-12220	07555-00901	74200-12221	-	-

\* Reducing Sleeve 5 replaces Adaptor Nut fitted to Base Tool.

\*\* Nose Assembly includes special Nose Casing 07555-00315. The standard Nose Casing 74200-12091 fitted to the Base Tool is not used for this type of M10 Nose Assembly.

## Fitting Instructions

**IMPORTANT**

**The air supply must be disconnected when fitting or removing nose assemblies unless specifically instructed otherwise.**

**Prior to fitting** ensure that the Tool is set at zero stroke by turning Rear Casing clockwise until stop occurs.

Item numbers in **bold** refer to the illustration.

- Remove the Nose Casing.
- Remove the Adaptor Nut.
- Insert Drive Shaft **4** into Spindle.
- Fit Drive Screw **3** onto Drive Shaft **4**.
- Fit the Friction Ring onto the Spindle.
- Screw Reducing Sleeve **5** onto Spindle. Hold Spindle with a suitable spanner and tighten Lock Nut against Spindle.
- Screw Lock Nut **2** onto Nose Tip **1** and screw into Nose Casing.
- Screw Nose Casing onto Tool.
- The reverse operation is carried out for equipment removal.
  
- With Tool still disconnected from air supply, screw Nose Tip **1** into Nose Casing until it stops against Drive Screw **3**, then unscrew Nose Tip **1** one complete turn.
- Holding Nose Tip **1** in position, screw Lock Nut **2** onto front face of Nose Casing and tighten using a suitable spanner.
- Adjust Tool stroke as shown in the Stroke Adjustment section of 74200 Instruction Manual.

## Servicing Instructions

**IMPORTANT**

**The air supply must be disconnected when fitting or removing nose assemblies unless specifically instructed otherwise.**

Nose assemblies should be serviced at weekly intervals.

- Remove the complete Nose Assembly using the reverse procedure to the Fitting Instructions.
- Any worn or damaged part should be replaced by a new part.
- Particularly check wear on Drive Screw **3** and Drive Shaft **4**.
- Assemble according to Fitting Instructions.

Datasheet Number	Issue	C/N
07900-00920	A	08/170

**Avdel UK Limited**

Pacific House, 2 Swiftfields, Watchmead Industrial Estate, Welwyn Garden City, Herts, AL7 1LY, United Kingdom  
 Tel: +44 (0) 1707 292000 Fax: +44 (0) 1707 292199 Internet: www.avdel-global.com

**Avdel® is a trademark of Avdel UK Limited.**