



An Acument™ Global Technologies Company

Avseal® II Nose Assembly Instructions

Genesis®, 07220 and T10 Tools

Safety Rules

This technical datasheet must be read with particular attention to the safety rules and operating instructions listed in the Genesis®, 07220 and T10 Instruction Manuals, by any person fitting or operating the Avseal® II nose assemblies and hand tools.

Intent of Use

The Avseal® II nose assemblies in combination with the Genesis®, 07220 and T10 tools are designed for placing Avdel® Avseal® II breakstem fasteners only. The correct placing tool and nose assembly must be selected for each fastener size as shown in the tables on pages 2 to 11.

IMPORTANT

The tools and nose assemblies must be used in accordance with the safety rules and fitting instructions contained within this datasheet and the tool instruction manuals. The placing of fasteners not included in this datasheet could have a detrimental impact on the working life of the tool and nose assemblies and could invalidate the warranty.

The tables on pages 2 to 11 provide a full list of part numbers for the nose tips, nose assemblies and base tools required to place each Avseal® II size. These tables should be used to select and order the correct placing equipment.

Each of the parts can be ordered separately or in the case of the Genesis® tools, a complete tool part number is provided that will include the base tool, nose assembly and nose tip.

Please note that there are two types of Avseal® II, the STANDARD range (details provided in the tables on pages 2 to 7) and the LOW PRESSURE range (details provided in the tables on pages 8 to 11) each requiring specific nose equipment for a given product size.

For the fitting and servicing instructions for each nose assembly refer to the page number provided in the tables on pages 2 to 11.

IMPORTANT

Nose assemblies do NOT include nose tips. Nose tips must be ordered separately.

Avseal® II Standard Range Nose Equipment Part Numbers

Insert Sizes 4 and 5mm

INSERT SIZE	NOSE TIP		TOOL TYPE	BASIC TOOL PART No.	NOSE ASSY PART No.	PAGE REF.	COMPLETE TOOL No.	
	EXTENSION	PART No.						
4mm	1mm	71219-11346	GENESIS® nG1 REMOVABLE BOTTLE	71203-02000	71213-16100	13	71203-00407	
	2mm	71210-16106					71203-00402	
	8mm	71210-16110					71203-00403	
	1mm	71219-11346	GENESIS® nG1 FIXED BOTTLE	71204-02000	71213-16100	13	71204-00407	
	2mm	71210-16106					71204-00402	
	8mm	71210-16110					71204-00403	
	1mm	71219-11346	GENESIS® G2	71210-02000	71210-16100	12	-	
	2mm	71210-16106					-	
	8mm	71210-16110					-	
	1mm	71219-11346	GENESIS® nG2 REMOVABLE BOTTLE	71213-02000	71213-16100	13	71213-00416	
	2mm	71210-16106					71213-00402	
	8mm	71210-16110					71213-00403	
	1mm	71219-11346	GENESIS® nG2 FIXED BOTTLE	* 71214-02000	71213-16100	13	71214-00416	
	2mm	71210-16106					71214-00402	
	8mm	71210-16110					71214-00403	
	1mm	71219-11346	GENESIS® nG2S REMOVABLE BOTTLE	71401-02000	71213-16100	13	71401-00416	
	2mm	71210-16106					71401-00402	
	8mm	71210-16110					71401-00403	
	1mm	71219-11346	GENESIS® nG2S FIXED BOTTLE	71404-02000	71213-16100	13	71404-00416	
	2mm	71210-16106					71404-00402	
	8mm	71210-16110					71404-00403	
	5mm	1mm	71219-11347	GENESIS® nG1 REMOVABLE BOTTLE	71203-02000	71213-16100	13	71203-00408
		2mm	71210-16107					71203-00405
		8mm	71210-16111					71203-00406
1mm		71219-11347	GENESIS® nG1 FIXED BOTTLE	71204-02000	71213-16100	13	71204-00408	
2mm		71210-16107					71204-00405	
8mm		71210-16111					71204-00406	
1mm		71219-11347	GENESIS® G2	71210-02000	71210-16100	12	-	
2mm		71210-16107					-	
8mm		71210-16111					-	
1mm		71219-11347	GENESIS® nG2 REMOVABLE BOTTLE	71213-02000	71213-16100	13	71213-00417	
2mm		71210-16107					71213-00405	
8mm		71210-16111					71213-00406	
1mm		71219-11347	GENESIS® nG2 FIXED BOTTLE	* 71214-02000	71213-16100	13	71214-00417	
2mm		71210-16107					71214-00405	
8mm		71210-16111					71214-00406	
1mm		71219-11347	GENESIS® nG2S REMOVABLE BOTTLE	71401-02000	71213-16100	13	71401-00417	
2mm		71210-16107					71401-00405	
8mm		71210-16111					71401-00406	
1mm		71219-11347	GENESIS® nG2S FIXED BOTTLE	71404-02000	71213-16100	13	71404-00417	
2mm		71210-16107					71404-00405	
8mm		71210-16111					71404-00406	

* PREFERRED BASE TOOL OPTION FOR AVSEAL® SIZE

nGenesis® 'complete tool numbers' comprise: base tool, nose assembly and nose tip.

Avseal® II Standard Range Nose Equipment Part Numbers

Insert Size 6mm

INSERT SIZE	NOSE TIP		TOOL TYPE	BASIC TOOL PART No.	NOSE ASSY PART No.	PAGE REF.	COMPLETE TOOL No.
	EXTENSION	PART No.					
6mm	FLUSH	71210-16104	GENESIS® G2	71210-02000	71210-16100	12	-
	1mm	71219-11348					-
	2mm	71210-16108					-
	8mm	71210-16112					-
	FLUSH	71210-16104	GENESIS® nG2 REMOVABLE BOTTLE	71213-02000	71213-16100	13	71213-00407
	1mm	71219-11348					71213-00418
	2mm	71210-16108					71213-00408
	8mm	71210-16112					71213-00409
	FLUSH	71210-16104	GENESIS® nG2 FIXED BOTTLE	* 71214-02000	71213-16100	13	71214-00407
	1mm	71219-11348					71214-00418
	2mm	71210-16108					71214-00408
	8mm	71210-16112					71214-00409
	FLUSH	71210-16104	GENESIS® nG2S REMOVABLE BOTTLE	71401-02000	71213-16100	13	71401-00407
	1mm	71219-11348					71401-00418
	2mm	71210-16108					71401-00408
	8mm	71210-16112					71401-00409
	FLUSH	71210-16104	GENESIS® nG2S FIXED BOTTLE	71404-02000	71213-16100	13	71404-00407
	1mm	71219-11348					71404-00418
	2mm	71210-16108					71404-00408
	8mm	71210-16112					71404-00409
	FLUSH	71210-16104	GENESIS® G3	71220-02000	71210-16100	13	-
	1mm	71219-11348					-
	2mm	71210-16108					-
	8mm	71210-16112					-
	FLUSH	71210-16104	GENESIS® G3HD	71221-02000	71210-16100	13	-
	1mm	71219-11348					-
	2mm	71210-16108					-
	8mm	71210-16112					-
	FLUSH	71210-16104	GENESIS® nG3	71224-02000	71210-16100	13	71224-00407
	1mm	71219-11348					71224-00436
	2mm	71210-16108					71224-00408
	8mm	71210-16112					71224-00409

*** PREFERRED BASE TOOL OPTION FOR AVSEAL® SIZE**

nGenesis® 'complete tool numbers' comprise: base tool, nose assembly and nose tip.

Avseal® II Standard Range Nose Equipment Part Numbers

Insert Size 6.5mm

INSERT SIZE	NOSE TIP		TOOL TYPE	BASIC TOOL PART No.	NOSE ASSY PART No.	PAGE REF.	COMPLETE TOOL No.
	EXTENSION	PART No.					
6.5mm	FLUSH	71210-16114	GENESIS® G2	71210-02000	71210-16100	12	-
	1mm	71210-16117					-
	2mm	71210-16115					-
	8mm	71210-16116					-
	FLUSH	71210-16114	GENESIS® nG2 REMOVABLE BOTTLE	71213-02000	71213-16100	13	71213-00413
	1mm	71210-16117					71213-00419
	2mm	71210-16115					71213-00414
	8mm	71210-16116					71213-00415
	FLUSH	71210-16114	GENESIS® nG2 FIXED BOTTLE	* 71214-02000	71213-16100	13	71214-00413
	1mm	71210-16117					71214-00419
	2mm	71210-16115					71214-00414
	8mm	71210-16116					71214-00415
	FLUSH	71210-16114	GENESIS® nG2S REMOVABLE BOTTLE	71401-02000	71213-16100	13	71401-00413
	1mm	71210-16117					71401-00419
	2mm	71210-16115					71401-00414
	8mm	71210-16116					71401-00415
	FLUSH	71210-16114	GENESIS® nG2S FIXED BOTTLE	71404-02000	71213-16100	13	71404-00413
	1mm	71210-16117					71404-00419
	2mm	71210-16115					71404-00414
	8mm	71210-16116					71404-00415
	FLUSH	71210-16114	GENESIS® G3	71220-02000	71210-16100	12	-
	1mm	71210-16117					-
	2mm	71210-16115					-
	8mm	71210-16116					-
	FLUSH	71210-16114	GENESIS® G3HD	71221-02000	71210-16100	12	-
	1mm	71210-16117					-
	2mm	71210-16115					-
	8mm	71210-16116					-
	FLUSH	71210-16114	GENESIS® nG3	71224-02000	71210-16100	12	71224-00433
	1mm	71210-16117					71224-00437
	2mm	71210-16115					71224-00434
	8mm	71210-16116					71224-00435

*** PREFERRED BASE TOOL OPTION FOR AVSEAL® SIZE**

nGenesis® 'complete tool numbers' comprise: base tool, nose assembly and nose tip.

Avseal® II Standard Range Nose Equipment Part Numbers

Insert Size 7mm

INSERT SIZE	NOSE TIP		TOOL TYPE	BASIC TOOL PART No.	NOSE ASSY PART No.	PAGE REF.	COMPLETE TOOL No.
	EXTENSION	PART No.					
7mm	FLUSH	71210-16105	GENESIS® G2	71210-02000	71210-16100	12	-
	1mm	71219-11349					-
	2mm	71210-16109					-
	8mm	71210-16113					-
	FLUSH	71210-16105	GENESIS® nG2 REMOVABLE BOTTLE	71213-02000	71213-16100	13	71213-00410
	1mm	71219-11349					71213-00420
	2mm	71210-16109					71213-00411
	8mm	71210-16113					71213-00412
	FLUSH	71210-16105	GENESIS® nG2 FIXED BOTTLE	* 71214-02000	71213-16100	13	71214-00410
	1mm	71219-11349					71214-00420
	2mm	71210-16109					71214-00411
	8mm	71210-16113					71214-00412
	FLUSH	71210-16105	GENESIS® nG2S REMOVABLE BOTTLE	71401-02000	71213-16100	13	71401-00410
	1mm	71219-11349					71401-00420
	2mm	71210-16109					71401-00411
	8mm	71210-16113					71401-00412
	FLUSH	71210-16105	GENESIS® nG2S FIXED BOTTLE	71404-02000	71213-16100	13	71404-00410
	1mm	71219-11349					71404-00420
	2mm	71210-16109					71404-00411
	8mm	71210-16113					71404-00412
	FLUSH	71210-16105	GENESIS® G3	71220-02000	71210-16100	12	-
	1mm	71219-11349					-
	2mm	71210-16109					-
	8mm	71210-16113					-
	FLUSH	71210-16105	GENESIS® G3HD	71221-02000	71210-16100	12	-
	1mm	71219-11349					-
	2mm	71210-16109					-
	8mm	71210-16113					-
	FLUSH	71210-16105	GENESIS® nG3	71224-02000	71210-16100	12	71224-00410
	1mm	71219-11349					71224-00438
	2mm	71210-16109					71224-00411
	8mm	71210-16113					71224-00412
	FLUSH	71210-16105	GENESIS® G4	71230-02000	71210-16100	12	-
	1mm	71219-11349					-
	2mm	71210-16109					-
	8mm	71210-16113					-
	FLUSH	71210-16105	GENESIS® G4HD	71231-02000	71210-16100	12	-
	1mm	71219-11349					-
	2mm	71210-16109					-
	8mm	71210-16113					-
	FLUSH	71210-16105	GENESIS® nG4	71234-02000	71210-16100	12	71234-00410
	1mm	71219-11349					71234-00422
	2mm	71210-16109					71234-00411
	8mm	71210-16113					71234-00412

* PREFERRED BASE TOOL OPTION FOR AVSEAL® SIZE

nGenesis® 'complete tool numbers' comprise: base tool, nose assembly and nose tip.

Avseal® II Standard Range Nose Equipment Part Numbers

Insert Sizes 8 and 9mm

INSERT SIZE	NOSE TIP		TOOL TYPE	BASIC TOOL PART No.	NOSE ASSY PART No.	PAGE REF.	COMPLETE TOOL No.
	EXTENSION	PART No.					
8mm	FLUSH	71220-16102	GENESIS® G3	71220-02000	71220-16100	12	-
	1mm	71229-11350					-
	2mm	71220-16103					-
	8mm	71220-16104					-
	FLUSH	71220-16102	GENESIS® G3HD	71221-02000	71220-16100	12	-
	1mm	71229-11350					-
	2mm	71220-16103					-
	8mm	71220-16104					-
	FLUSH	71220-16102	GENESIS® nG3	71224-02000	71220-16100	12	71224-00413
	1mm	71229-11350					71224-00439
	2mm	71220-16103					71224-00414
	8mm	71220-16104					71224-00415
	FLUSH	71220-16102	GENESIS® G4	71230-02000	71220-16100	12	-
	1mm	71229-11350					-
	2mm	71220-16103					-
	8mm	71220-16104					-
	FLUSH	71220-16102	GENESIS® G4HD	71231-02000	71220-16100	12	-
	1mm	71229-11350					-
	2mm	71220-16103					-
	8mm	71220-16104					-
FLUSH	71220-16102	GENESIS® nG4	* 71234-02000	71220-16100	12	71234-00413	
1mm	71229-11350					71234-00443	
2mm	71220-16103					71234-00414	
8mm	71220-16104					71234-00415	
9mm	FLUSH	71230-16102	GENESIS® G4	71230-02000	71230-15800	12	-
	1mm	71239-11351					-
	2mm	71230-16104					-
	8mm	71230-16106					-
	FLUSH	71230-16102	GENESIS® G4HD	71231-02000	71230-15800	12	-
	1mm	71239-11351					-
	2mm	71230-16104					-
	8mm	71230-16106					-
	FLUSH	71230-16102	GENESIS® nG4	* 71234-02000	71230-15800	12	71234-00416
	1mm	71239-11351					71234-00444
	2mm	71230-16104					71234-00417
	8mm	71230-16106					71234-00418

*** PREFERRED BASE TOOL OPTION FOR AVSEAL® SIZE**

nGenesis® 'complete tool numbers' comprise: base tool, nose assembly and nose tip.

Avseal® II Standard Range Nose Equipment Part Numbers

Insert Sizes 10, 11 and 12mm

INSERT SIZE	NOSE TIP		TOOL TYPE	BASIC TOOL PART No.	NOSE ASSY PART No.	PAGE REF.	COMPLETE TOOL No.
	EXTENSION	PART No.					
10mm	FLUSH	71230-16103	GENESIS® G4	71230-02000	71230-16100	12	-
	1mm	71239-11352					-
	2mm	71230-16105					-
	8mm	71230-16107					-
	FLUSH	71230-16103	GENESIS® G4HD	71231-02000	71230-16100	12	-
	1mm	71239-11352					-
	2mm	71230-16105					-
	8mm	71230-16107					-
	FLUSH	71230-16103	GENESIS® nG4	* 71234-02000	71230-16100	12	71234-00419
	1mm	71239-11352					71234-00445
	2mm	71230-16105					71234-00420
	8mm	71230-16107					71234-00421
11mm	FLUSH	07220-06402	07220	07220-00200	07220-06600	14	-
	1mm	07220-06408					-
	2mm	07220-06403					-
	8mm	707220-06600					-
12mm	FLUSH	07220-06502	07220	07220-00200	07220-06700	14	-
	1mm	07220-06511					-
	2mm	07220-06504					-
	8mm	707220-06508					-

*** PREFERRED BASE TOOL OPTION FOR AVSEAL® SIZE**

nGenesis® 'complete tool numbers' comprise: base tool, nose assembly and nose tip.

Avseal® II Low Pressure/Automotive Range Nose Equipment Part Numbers

Insert Size 8mm

INSERT SIZE	NOSE TIP		TOOL TYPE	BASIC TOOL PART No.	NOSE ASSY PART No.	PAGE REF.	COMPLETE TOOL No.
	EXTENSION	PART No.					
8mm	FLUSH	71220-16102	GENESIS® G3	71220-02000	71220-16100	12	-
	1mm	71229-11350					-
	2mm	71220-16103					-
	8mm	71220-16104					-
	FLUSH	71220-16102	GENESIS® G3HD	71221-02000	71220-16100	12	-
	1mm	71229-11350					-
	2mm	71220-16103					-
	8mm	71220-16104					-
	FLUSH	71220-16102	GENESIS® nG3	71224-02000	71220-16100	12	71224-00413
	1mm	71229-11350					71224-00439
	2mm	71220-16103					71224-00414
	8mm	71220-16104					71224-00415
	FLUSH	71220-16102	GENESIS® G4	71230-02000	71220-16100	12	-
	1mm	71229-11350					-
	2mm	71220-16103					-
	8mm	71220-16104					-
	FLUSH	71220-16102	GENESIS® G4HD	71231-02000	71220-16100	12	-
	1mm	71229-11350					-
	2mm	71220-16103					-
	8mm	71220-16104					-
	FLUSH	71220-16102	GENESIS® nG4	* 71234-02000	71220-16100	12	71234-00413
	1mm	71229-11350					71234-00443
	2mm	71220-16103					71234-00414
	8mm	71220-16104					71234-00415

*** PREFERRED BASE TOOL OPTION FOR AVSEAL® SIZE**

nGenesis® 'complete tool numbers' comprise: base tool, nose assembly and nose tip.

Avseal® II Low Pressure/Automotive Range Nose Equipment Part Numbers

Insert Size 9mm

INSERT SIZE	NOSE TIP		TOOL TYPE	BASIC TOOL PART No.	NOSE ASSY PART No.	PAGE REF.	COMPLETE TOOL No.
	EXTENSION	PART No.					
9mm	FLUSH	71220-16105	GENESIS® G3	71220-02000	71220-16100	12	-
	1mm	71220-16121					-
	2mm	71220-16106					-
	8mm	71220-16107					-
	FLUSH	71220-16105	GENESIS® G3HD	71221-02000	71220-16100	12	-
	1mm	71220-16121					-
	2mm	71220-16106					-
	8mm	71220-16107					-
	FLUSH	71220-16105	GENESIS® nG3	71224-02000	71220-16100	12	71224-00430
	1mm	71220-16121					71224-00440
	2mm	71220-16106					71224-00431
	8mm	71220-16107					71224-00432
	FLUSH	71220-16105	GENESIS® G4	71230-02000	71220-16100	12	-
	1mm	71220-16121					-
	2mm	71220-16106					-
	8mm	71220-16107					-
	FLUSH	71220-16105	GENESIS® G4HD	71231-02000	71220-16100	12	-
	1mm	71220-16121					-
	2mm	71220-16106					-
	8mm	71220-16107					-
	FLUSH	71220-16105	GENESIS® nG4	* 71234-02000	71220-16100	12	71234-00430
	1mm	71220-16121					71234-00446
	2mm	71220-16106					71234-00431
	8mm	71220-16107					71234-00432

*** PREFERRED BASE TOOL OPTION FOR AVSEAL® SIZE**

nGenesis® 'complete tool numbers' comprise: base tool, nose assembly and nose tip.

Avseal® II Low Pressure/Automotive Range Nose Equipment Part Numbers
Insert Sizes 10, 11 and 12mm

INSERT SIZE	NOSE TIP		TOOL TYPE	BASIC TOOL PART No.	NOSE ASSY PART No.	PAGE REF.	COMPLETE TOOL No.
	EXTENSION	PART No.					
10mm	FLUSH	71230-16109	GENESIS® G4	71230-02000	71230-15800	12	-
	1mm	71230-16118					-
	2mm	71230-16112					-
	8mm	71230-16115					-
	FLUSH	71230-16109	GENESIS® G4HD	71231-02000	71230-15800	12	-
	1mm	71230-16118					-
	2mm	71230-16112					-
	8mm	71230-16115					-
	FLUSH	71230-16109	GENESIS® nG4	* 71234-02000	71230-15800	12	71234-00433
	1mm	71230-16118					71234-00447
	2mm	71230-16112					71234-00434
	8mm	71230-16115					71234-00435
11mm	FLUSH	71230-16110	GENESIS® G4	71230-02000	71230-16100	12	-
	1mm	71230-16119					-
	2mm	71230-16113					-
	8mm	71230-16116					-
	FLUSH	71230-16110	GENESIS® G4HD	71231-02000	71230-16100	12	-
	1mm	71230-16119					-
	2mm	71230-16113					-
	8mm	71230-16116					-
	FLUSH	71230-16110	GENESIS® nG4	* 71234-02000	71230-16100	12	71234-00436
	1mm	71230-16119					71234-00448
	2mm	71230-16113					71234-00437
	8mm	71230-16116					71234-00438
12mm	FLUSH	71230-16111	GENESIS® G4	71230-02000	71230-16100	12	-
	1mm	71230-16120					-
	2mm	71230-16114					-
	8mm	71230-16117					-
	FLUSH	71230-16111	GENESIS® G4HD	71231-02000	71230-16100	12	-
	1mm	71230-16120					-
	2mm	71230-16114					-
	8mm	71230-16117					-
	FLUSH	71230-16111	GENESIS® nG4	* 71234-02000	71230-16100	12	71234-00439
	1mm	71230-16120					71234-00449
	2mm	71230-16114					71234-00440
	8mm	71230-16117					71234-00441

*** PREFERRED BASE TOOL OPTION FOR AVSEAL® SIZE**

nGenesis® 'complete tool numbers' comprise: base tool, nose assembly and nose tip.

Avseal® II Low Pressure/Automotive Range Nose Equipment Part Numbers
Insert Sizes 13, 14, 14 Flanged, 16, 16 Flanged 18 and 20mm

INSERT SIZE	NOSE TIP		TOOL TYPE	BASIC TOOL PART No.	NOSE ASSY PART No.	PAGE REF.	COMPLETE TOOL No.
	EXTENSION	PART No.					
13mm	FLUSH	07220-06405	07220	07220-00200	07220-06600	14	-
	1mm	07220-06409					-
	2mm	07220-06406					-
	8mm	07220-06407					-
14mm	FLUSH	07220-06508	07220	07220-00200	07220-06700	14	-
	1mm	07220-06512					-
	2mm	07220-06509					-
	8mm	07220-06510					-
14mm FLANGED	FLUSH	07220-06508	07220	07220-00200	07220-06700	14	-
	1mm	-					-
	2mm	-					-
	8mm	-					-
16mm	FLUSH	73411-05008	T10	73411-02000	73411-05000	15	-
	1mm	73411-05011					-
	2mm	73411-05009					-
	8mm	73411-05010					-
16mm FLANGED	FLUSH	73411-05008	T10	73411-02000	73411-05000	15	-
	1mm	-					-
	2mm	-					-
	8mm	-					-
18mm	FLUSH	73411-05208	T10	73411-02000	73411-05200	15	-
	1mm	73411-05212					-
	2mm	73411-05209					-
	8mm	73411-05210					-
20mm	FLUSH	73411-05408	T10	73411-02000	73411-05400	15	-
	1mm	73411-05413					-
	2mm	73411-05409					-
	8mm	73411-05410					-

Genesis® Nose Assemblies - 71210-16100, 71220-16100, 71230-15800 and 71230-16100

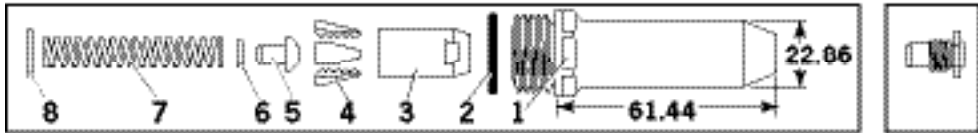
IMPORTANT
The air supply must be disconnected when fitting or removing nose assemblies.

NOSE ASSEMBLY part n° 71210-16100		
ITEM	DESCRIPTION	PART N°
1	NOSE CASING	07340-00306
2	'O' RING	07003-00067
3	JAW HOUSING	07340-00304
4	JAWS	71210-16101
5	JAW SPREADER	07498-04502
6	BUFFER	71210-05001
7	SPRING	07500-00418
8	LOCKING RING	07340-00327

NOSE ASSEMBLY part n° 71220-16100		
ITEM	DESCRIPTION	PART N°
1	NOSE CASING	07340-00306
2	'O' RING	07003-00067
3	JAW HOUSING	07612-02003
4	JAWS	71220-16120
5	JAW SPREADER	07498-04502
6	BUFFER	07498-03003
7	SPRING	07500-00418
8	LOCKING RING	07340-00327

NOSE ASSEMBLY part n° 71230-15800		
ITEM	DESCRIPTION	PART N°
1	NOSE CASING	07340-00306
2	'O' RING	07003-00067
3	JAW HOUSING	07612-02003
4	JAWS	07612-02002
5	JAW SPREADER	07498-04502
6	BUFFER	07498-03003
7	SPRING	07500-00418
8	LOCKING RING	07340-00327

NOSE ASSEMBLY part n° 71230-16100		
ITEM	DESCRIPTION	PART N°
1	NOSE CASING	07340-00306
2	'O' RING	07003-00067
3	JAW HOUSING	07612-02003
4	JAWS	71230-16101
5	JAW SPREADER	07498-04502
6	BUFFER	07498-03003
7	SPRING	07500-00418
8	LOCKING RING	07340-00327



Fitting Instructions

Item numbers in **bold** refer to nose assembly components in the tables and diagram above.

- Lightly coat Jaws **4** with Moly Lithium grease*.
- Drop Jaws **4** into Jaw Housing **3**.
- Insert Jaw Spreader **5** into Jaw Housing **3**.
- Locate Buffer **6** on Jaw Spreader **5**.
- Locate Spring **7** onto Jaw Spreader **5**.
- Fit Locking Ring **8** onto the jaw spreader housing.
- Holding tool pointing down, screw the assembled jaw housing onto the jaw spreader housing and tighten with spanner*.
- Screw the nose tip into Nose Casing **1** and tighten with spanner*.
- Place Nose Casing **1** with 'O' Ring **2** over Jaw Housing **3** and screw onto the tool, tightening with spanner*.

Servicing Instructions

- Nose assemblies should be serviced at weekly intervals. You should hold some stock of all internal components of the nose assembly and nose tips as they will need regular replacement.
- Remove the nose assembly using the reverse procedure to the 'Fitting Instructions'.
- Any worn or damaged part should be replaced.
- Clean and check wear on jaws.
- Ensure that the jaw spreader is not distorted.
- Check that the spring is not distorted.
- Assemble according to fitting instructions.

* Item included in the G2 and G4 Service Kits. For complete list refer to the G2 and G4 instruction manuals.

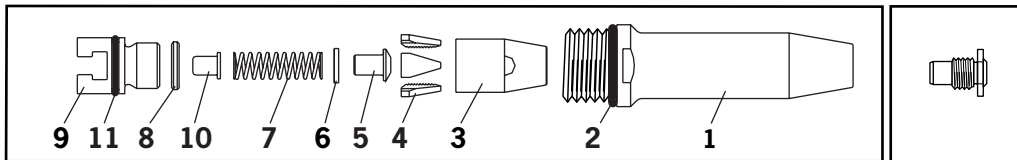
Genesis® nG2 Nose Assembly - 71213-16100

IMPORTANT

The air supply must be disconnected when fitting or removing nose assemblies.

NOSE ASSEMBLY part n° 71213-16100

ITEM	DESCRIPTION	PART N°
1	TAPERED NOSE CASING	71213-00350
2	'O' RING	07003-00067
3	JAW HOUSING - TAPERED	71210-15902
4	JAW	71210-16101
5	JAW SPREADER	07498-04502
6	BUFFER	71210-05001
7	SPRING	07500-00418
8	LOCKING RING	07340-00327
9	JAW SPREADER HOUSING 'T'	71210-20321
10	DETENT SLEEVE	71210-20322
11	'O' RING	07003-00277



Fitting Instructions

Item numbers in **bold** refer to nose assembly components in the table and diagram above.

- Lightly coat Jaws **4** with Moly Lithium grease*.
- Drop Jaws **4** into Jaw Housing **3**.
- Insert Jaw Spreader **5** into Jaw Housing **3**.
- Locate Buffer **6** on Jaw Spreader **5**.
- Locate Spring **7** onto Jaw Spreader **5**.
- Insert Detent Sleeve **10** into Jaw Spreader Housing 'T' **9**.
- Fit Locking Ring **8** onto Jaw Spreader Housing 'T' **9**.
- For tools converted to nose assemblies Type 2 and 3, fit Locking Ring **8** onto Jaw Spreader Housing 'T' **9** attached to the tool.
- Tighten Jaw Housing **3** and assemble components onto Jaw Spreader Housing 'T' **9**.
- Utilising the 'T' section profiles assemble nose assembly onto the tool piston via the Male 'T' Adaptor
- Screw the nose tip into Nose Casing **1** and tighten with a spanner*.
- Place Nose Casing **1** over Jaw Housing **3** and screw onto the tool, tightening with a spanner*.

Servicing Instructions

Nose assemblies should be serviced at weekly intervals. You should hold some stock of all internal components of the nose assembly and nose tips as they will need regular replacement.

- Remove the nose assembly using the reverse procedure to the 'Fitting Instructions'.
- Any worn or damaged parts should be replaced.
- Clean and check wear on jaws.
- Ensure that the Jaw Spreader **5** is not distorted.
- Check Spring **7** is not distorted.
- Assemble according to fitting instructions above.

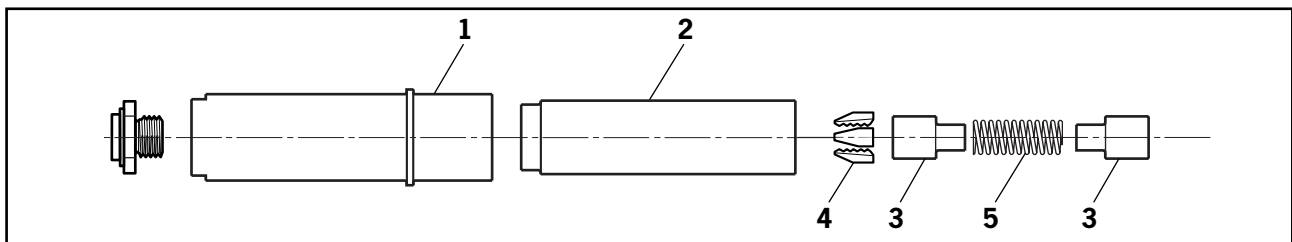
*Refers to items included in the nG2 Service Kit. For complete kit refer to nG2 Instruction Manual.

07220 Nose Assemblies – 07220-06600 and 07220-06700

IMPORTANT
The air supply must be disconnected when fitting or removing nose assemblies.

NOSE ASSEMBLY part n° 07220-06600		
ITEM	DESCRIPTION	PART N°
1	NOSE CASING	07220-06601
2	JAW HOUSING	07220-06602
3	SPRING GUIDE	07220-06603
4	JAWS	07220-06401
5	SPRING	07500-02005

NOSE ASSEMBLY part n° 07220-06700		
ITEM	DESCRIPTION	PART N°
1	NOSE CASING	07220-06601
2	JAW HOUSING	07220-06602
3	SPRING GUIDE	07220-06603
4	JAWS	07220-06501
5	SPRING	07500-02005



Fitting Instructions

Item numbers in **bold** refer to nose assembly components in the tables and diagram above.

- Lightly coat Jaws **4** with Moly Lithium grease*.
- Assemble Spring Guides **3** and Spring **5** and stand on end on a flat even surface.
- Balance the three Chuck Jaws **4** on the upper Spring Guide **3**.
- Carefully lower Jaw Housing **2** over the assembled components.
- Holding tool pointing down, screw the assembled jaw housing onto the tool head piston and tighten with spanner*.
- Screw the nose tip into Nose Casing **1** and tighten with spanner*.
- Place Nose Casing **1** over the Jaw Housing **2** and onto the tool, ensuring that the lugs on the body enter the slots in the head extension of the tool.
- Turn the reducing adaptor body through 90° then turn the head extension ring until it springs into its position in the slots of the head extension.

Servicing Instructions

Nose assemblies should be serviced at weekly intervals. You should hold some stock of all internal components of the nose assembly and nose tips as they will need regular replacement.

- Remove the nose assembly using the reverse procedure to the 'Fitting Instructions'.
- Any worn or damaged parts should be replaced.
- Clean and check wear on jaws.
- Check that the spring and spring guides are not distorted.
- Clean and inspect components, renewing worn or damaged items.
- Assemble according to fitting instructions above.

*Refers to items included in the 07220 Service Kit. For complete kit refer to 07220 Instruction Manual

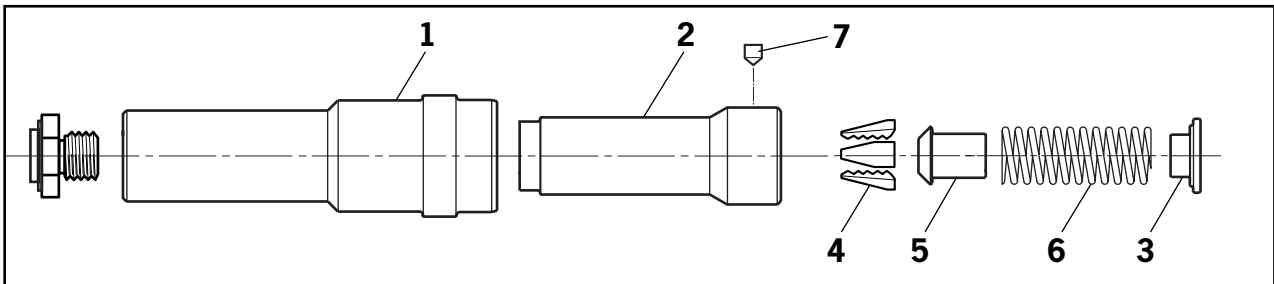
T10 Nose Assemblies – 73411-05000, 73411-05200 and 73411-05400

IMPORTANT
The air supply must be disconnected when fitting or removing nose assemblies.

NOSE ASSEMBLY part n° 73411-05000		
ITEM	DESCRIPTION	PART N°
1	NOSE CASING	73411-05007
2	JAW HOUSING	73411-05005
3	SPRING GUIDE	07220-06301
4	JAWS	73411-05001
5	JAW SPREADER	07220-06302
6	SPRING	07220-06305
7	COLLET LOCK	73411-05004

NOSE ASSEMBLY part n° 73411-05200		
ITEM	DESCRIPTION	PART N°
1	NOSE CASING	73411-05007
2	JAW HOUSING	73411-05005
3	SPRING GUIDE	07220-06301
4	JAWS	73411-05201
5	JAW SPREADER	07220-06302
6	SPRING	07220-06305
7	COLLET LOCK	73411-05004

NOSE ASSEMBLY part n° 73411-05400		
ITEM	DESCRIPTION	PART N°
1	NOSE CASING	73411-05007
2	JAW HOUSING	73411-05005
3	SPRING GUIDE	07220-06301
4	JAWS	73411-05401
5	JAW SPREADER	07220-06302
6	SPRING	07220-06305
7	COLLET LOCK	73411-05004



Fitting Instructions

Item numbers in **bold** refer to nose assembly components in the tables and diagram above.

- Lightly coat Jaws **4** with Moly Lithium grease.
- Drop Jaws **4** into Jaw Housing **2**.
- Insert Jaw Spreader **5** into Jaw Housing **2**.
- Locate Spring **6** on Jaw Spreader **5**.
- Locate Spring Guide **3** onto Spring **6**.
- Holding tool pointing down, screw the assembled jaw housing onto the piston rod until it is flush with the end of the collet adaptor and tighten with a spanner.
- Insert Collet Lock **7** into Jaw Housing **2** ensuring that it sits below the outer surface of the jaw housing.
- Screw the nose tip into Nose Casing **1** and tighten with a spanner.
- Slide the Nose Casing **1** over the jaw housing and screw into the anvil adaptor until it is firm.
- There is a locking 'O' ring which will create a resistance to the final few turns of the nose casing. It is imperative that the nose casing be hand tightened up against the rear locking face.

Servicing Instructions

Nose assemblies should be serviced at weekly intervals. You should hold some stock of all internal components of the nose assembly and nose tips as they will need regular replacement.

- Remove the nose assembly using the reverse procedure to the 'Fitting Instructions'.
- Any worn or damaged parts should be replaced.
- Clean and check wear on jaws.
- Ensure that the jaw spreader is not distorted.
- Check that the spring and spring guide is not distorted.
- Assemble according to fitting instructions above.



An Acument™ Global Technologies Company

Notes

© 2008 Acument Intellectual Properties, LLC

Data Sheet No.	Issue	Change Note No.
07900-00840	E2	07/103
	F	08/018
	G	08/177
	H	09/287
	H2	10/136

Avdel UK Limited

Pacific House, 2 Swiftfields, Watchmead Industrial Estate,

Welwyn Garden City, Herts, AL7 1LY United Kingdom

Tel: +44 1707 292000

Facsimile: +44 1707 292199

www.avdel-global.com

Avdel®, Avseal® and Genesis® are trademarks of Avdel UK Limited.