

Fitting Instructions for Genesis® nG4/G4/G4HD 3/16 & 1/4 Avdelok® Nose Assemblies

IMPORTANT

THE AIR SUPPLY MUST ALWAYS BE DISCONNECTED BEFORE ANY DISMANTLING IS ATTEMPTED

The following parts are **NOT** required and must be removed from the basic tool before assembly of the Avdelok® nose equipment can commence. Part numbers can be identified by referring to the tool assembly diagram in the appropriate tool manual.

71210-02101 Jaw Spreader Housing

71230-02102 Vacuum Sleeve

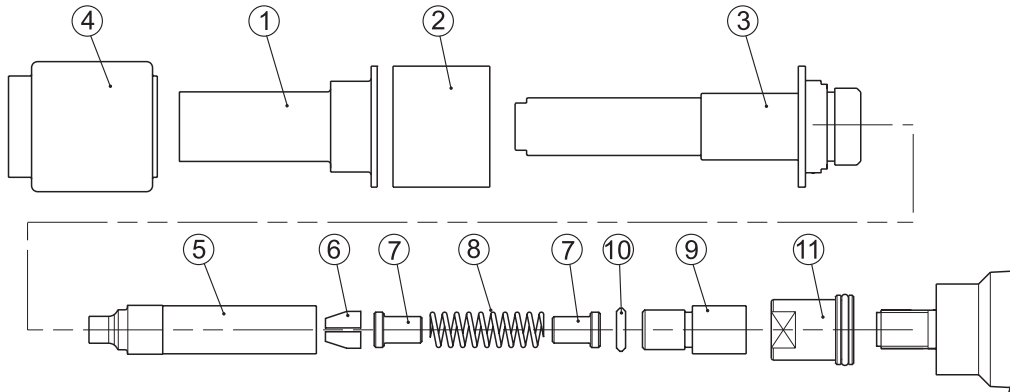
71230-02015 Locknut

71210-02104 Seal Housing

Assembly of Avdelok® Nose Assembly (Refer to Item Numbers () listed in the table below)

1. Screw Locknut (11) fully onto the piston.
2. Screw Adaptor (9) fully onto the piston before tightening the locknut against it. Fit Friction Ring (10).
3. Assemble Chuck jaws (6), Spring Guide (7) and Spring (8) into the Chuck Collet (5). Lightly coat the Jaws and the internal bore of the Chuck Collet with Molybdenum grease.
4. Screw the Chuck Collet assembly onto the Adaptor (9) and tighten.
5. Assemble the Anvil (3) over the Chuck Collet and screw into the head Assembly.
6. Assemble the Buffer (2) and the Anvil Casing (1) over the Anvil and retain in place with the Rubber Shroud (4).

Note: For ease of fitting the Rubber Shroud, smear liquid soap on its internal surface.



1/4 AVDELOK® NOSE ASSEMBLY 71230-05020

3/16 AVDELOK® NOSE ASSEMBLY 71230-05010

| ITEM | 71230-05020 for 6.4 (1/4") Avdelok® | |
|------|-------------------------------------|----------------------|
| 1 | 71230-05012 | Anvil Casing |
| 2 | 71230-05014 | Buffer |
| 3 | 71230-05021 | Anvil |
| 4 | 71230-05013 | Rubber Shroud |
| 5 | 07200-02201 | Chuck Collet |
| 6 | 07220-02302 | Chuck Jaws |
| 7 | 07220-02104 | Spring Guide |
| 8 | 07220-02103 | Spring |
| 9 | 07610-00501 | Chuck Collet Adapter |
| 10 | 07610-02004 | Friction Ring |
| 11 | 71233-20200 | Locknut |

| ITEM | 71230-05010 for 4.8 (3/16") Avdelok® | |
|------|--------------------------------------|----------------------|
| 1 | 71230-05012 | Anvil Casing |
| 2 | 71230-05014 | Buffer |
| 3 | 71230-05011 | Anvil |
| 4 | 71230-05013 | Rubber Shroud |
| 5 | 07200-02101 | Chuck Collet |
| 6 | 07220-02102 | Chuck Jaws |
| 7 | 07220-02104 | Spring Guide |
| 8 | 07220-02103 | Spring |
| 9 | 07610-00501 | Chuck Collet Adapter |
| 10 | 07610-02004 | Friction Ring |
| 11 | 71233-20200 | Locknut |

| Data Sheet No. | Issue | Change Note No. |
|----------------|-------|-----------------|
| 07900-00795 | B | 07/288 |
| | | |

Avdel UK Limited.
 Pacific House, 2 Swiftfields, Watchmead Industrial Estate,
 Welwyn Garden City, Herts, AL7 1LY United Kingdom
 Tel: +44 1707 292000 Facsimile: +44 1707 292199
www.avdel-global.com