

Intent of Use

Range of Fasteners

nG4 is a hydro-pneumatic tool designed to place Avdel® breakstem fasteners at high speed making it ideal for batch or flow-line assembly in a wide variety of applications throughout all industries. It can place all fasteners listed opposite.

The tool features a vacuum system for fastener retention and trouble free collection of the spent stems regardless of tool orientation.

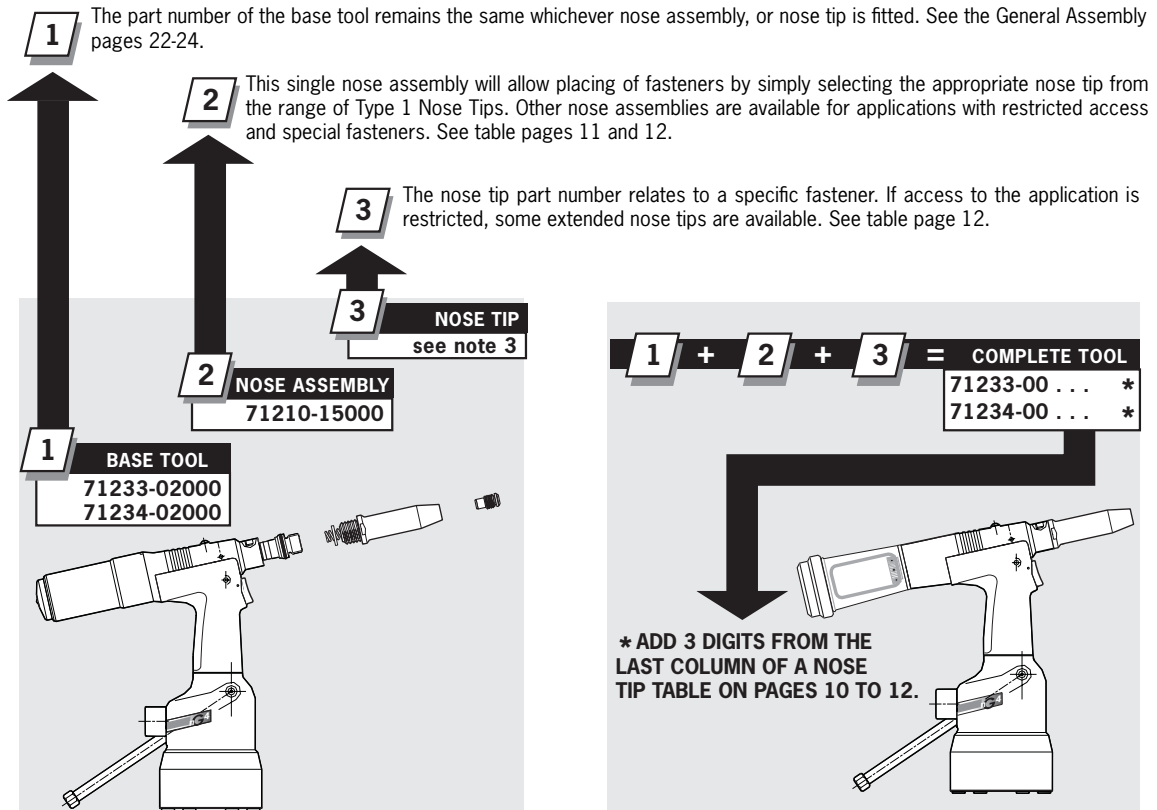
NOSE EQUIPMENT MUST BE FITTED AS DESCRIBED ON PAGE 9.

FASTENER NAME	FASTENER SIZE ($\frac{MM}{IN}$)													
	4.3	4.8	5	5.2	6	6.4	6.5	7	8	9	9.5	10	11	12
	-	$\frac{3}{16}$	-	-	-	$\frac{1}{4}$	-	-	-	-	$\frac{3}{8}$	-	-	-
AVEX®		●				●								
STAVEX®		●				●								
AVINOX®II		●				●								
AVIBULB®		●			●	●								
BULBEX®		●												
T-LOK®	●	●												
AVDEL® SR		●				●								
HEMLOK®						●								
MAXLOK®		●				●								
AVTAINER®											●			
* AVSEAL® II								●	●	●		●	●	●
Q RIVET		●				●								
T RIVET		●				●								
AVDELMATE®		●				●								
KLAMP-TITE®		●				●								
KLAMP TITE KTR®		●				●								
* LOCKBOLT		●				●								

* For $\frac{3}{16}$ " and $\frac{1}{4}$ " Lockbolt equipment refer to separate Data Sheet 07900-00795.

** For Avseal® equipment refer to separate Data Sheet 07900-00840.

Part Numbering



Nose Assemblies

Nose Tips

TYPE 1 NOSE TIPS

¹ In inches then in millimetres.

² Head forming nose tips for use with countersunk heads ONLY.

⁴ Material of the body then of the stem. 'Al' is the abbreviation for Aluminium.

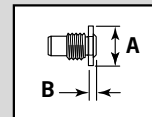
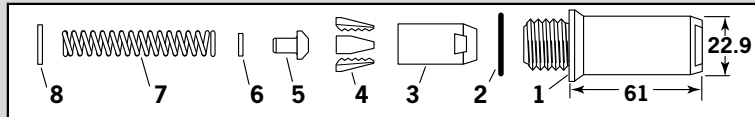
⁵ Domehead.

⁶ Countersunk.

NOSE ASSEMBLY part n° 71210-15000

ITEM	DESCRIPTION	PART N°
1	NOSE CASING	07340-00306
2	'O' RING	07003-00067
3	JAW HOUSING	07340-00304
4	JAWS	71210-15001
5	JAW SPREADER	07498-04502
6	BUFFER	71210-05001
7	SPRING	07500-00418
8	LOCKING RING	07340-00327

NAME	FASTENER		MATERIAL	NOSE TIP (mm)			see below
	Ø ¹			PART N°	'A'	'B'	
AVEX® Large flange	3/16	4.8	Aluminium	07381-04701	12.7	2.8	... 010
	3/16	4.8	Aluminium	07340-04800	19.0	3.3	... 016
	3/16	4.8	Steel	07490-04401	12.7	3.3	... 017
	3/16	4.8	Aluminium	07340-06601 ²	12.7	4.1	... 015
	1/4	6.4	Aluminium	07612-02001	12.7	3.3	... 021
STAVEX® Countersunk	3/16	4.8	Steel	07381-04701	12.7	2.8	... 010
	3/16	4.8	Steel	07381-04701	12.7	2.8	... 010
	3/16	4.8	Stainless Steel	07381-04701	12.7	2.8	... 010
	3/16	4.8	Steel	07340-04800	19.0	3.3	... 016
BULBEX®	3/16	4.8	Aluminium	07381-04701	12.7	2.8	... 010
AVINOX® II	3/16	4.8	Stainless Steel	07498-01401	12.7	4.8	... 082
T-LOK®	-	4.3	Steel	07340-06201	12.7	3.3	... 120
	3/16	4.8	Steel	07340-06201	12.7	3.3	... 120
AVIBULB®	3/16	4.8	Steel	07498-01401	12.7	4.8	... 082
	-	6.0	Steel	07612-02001	12.7	3.3	... 021
AVDEL® SR Countersunk	3/16	4.8	Any	07348-07001 ⁵	12.7	5.7	... 062
	1/4	6.4	Any	71220-60001	12.7	3.3	... 063
	3/16	4.8	Any	71210-16050 ⁶	12.7	5.7	... 064
Q RIVET	3/16	4.8	Any	07340-06201	12.7	3.3	... 120
	1/4	6.4	Any	07612-02001	12.7	3.3	... 021
AVDELMATE®	3/16	4.8	Any	07340-06201	12.7	3.3	... 120
	1/4	6.4	Any	07612-02001	12.7	3.3	... 021
T RIVET Large flange	3/16	4.8	Al/Al ⁴	703-A-25-6TA	15.9	9.5	... 380
	3/16	4.8	Al/Al ⁴	703-B-21	12.7	8.0	... 381
	3/16	4.8	Al/Steel ⁴	703-A-25-6T	15.9	9.5	... 383
Large flange	3/16	4.8	Al/Steel ⁴	703-B-26	12.7	9.0	... 384
	1/4	6.4	Al/Al ⁴	743-A-25-8TA	17.5	11.2	... 385
Large flange	1/4	6.4	Al/Al ⁴	743-B-21	12.7	8.0	... 386
	1/4	6.4	Al/Steel ⁴	743-A-25-8T	16.7	10.2	... 387
Large flange	1/4	6.4	Al/Steel ⁴	743-B-26	12.7	8.3	... 388
KLAMPTITE KTR®	3/16	4.8	Al Alloy	71220-16060	12.7	4.8	... 500
	1/4	6.4	Al Alloy	71220-16061	12.7	4.8	... 501
KLAMP-TITE®	3/16	4.8	Al Alloy	07381-04701	12.7	2.8	... 010
	1/4	6.4	Al Alloy	07612-02001	12.7	2.8	... 021



**COMPLETE TOOL
PART NUMBER :**
precede with
71233-00
or
71234-00

Nose Assemblies

Nose Tips

TYPE 2 NOSE TIPS

NOSE ASSEMBLY
part n° 71210-15200

ITEM	DESCRIPTION	PART N°
1	NOSE CASING	07340-02804
2	'O' RING	07003-00067
3	JAW HOUSING	07340-00304
4	JAWS	71210-15001
5	JAW SPREADER	07498-04502
6	BUFFER	71210-05001
7	SPRING	07500-00418
8	LOCKING RING	07340-00327
17	JAW SPREADER HOUSING	71210-02101
18	'O' RING	07003-00277

NAME	FASTENER		NOSE TIP (mm)		see below
	ϕ^1	MATERIAL	PART N°	'A' 'B'	
AVEX®	3/16	4.8 Aluminium	07340-02807	12.7 10.0	... 0 1 4
	3/16	4.8 Steel	07340-07301	12.7 11.8	... 0 1 8
BULBEX®	3/16	4.8 Aluminium	07340-02807	12.7 10.0	... 0 1 4
T-LOK®	-	4.3 Steel	07241-07101	12.7 10.0	... 1 2 1
	3/16	4.8 Steel	07241-07101	12.7 10.0	... 1 2 1
Q RIVET	3/16	4.8 Any	07340-02807	12.7 10.0	... 0 1 4

¹ In inches then in millimetres.

TYPE 2 NOSE TIPS ARE EXTENDED TO ALLOW ACCESS INTO APPLICATIONS WHERE TYPE 1 NOSE TIPS WILL NOT REACH.

COMPLETE TOOL PART NUMBER :
precede with 71233-00 or 71234-00

TYPE 5 NOSE TIP

NOSE ASSEMBLY
part n° 71230-15600

ITEM	DESCRIPTION	PART N°
1	NOSE CASING	07498-00501
2	'O' RING	07003-00067
9	CHUCK COLLET	07498-00801
4	JAWS	07220-02302
10	FRONT SPRING GUIDE	07498-00803
7	SPRING	07500-02005
11	REAR SPRING GUIDE	07498-00503
8	LOCKING RING	07340-00327
13	STOP NUT ASSY	71233-20200

NAME	FASTENER		NOSE TIP (mm)		see below
	ϕ^1	MATERIAL	PART N°	'A' 'B'	
AVTAINER®	3/8	9.6 Steel	07498-00802	19.1 4.1	... 2 4 3

¹ In inches then in millimetres.

COMPLETE TOOL PART NUMBER :
precede with 71233-00 or 71234-00

TYPE 6 NOSE TIPS

NOSE ASSEMBLY
part n° 71230-15800

ITEM	DESCRIPTION	PART N°
1	NOSE CASING	07340-00306
2	'O' RING	07003-00067
3	JAW HOUSING	07612-02003
4	JAWS	07612-02002
5	JAW SPREADER	07498-04502
6	BUFFER	07498-03003
7	SPRING	07500-00418
8	LOCKING RING	07340-00327

NAME	FASTENER		NOSE TIP (mm)		see below
	ϕ^1	MATERIAL	PART N°	'A' 'B'	
HEMLOK®	1/4	6.4 Any	07612-02001	14.3 3.6	... 2 6 1
STAVEX®	1/4	6.4 Any	07612-02001	14.3 3.6	... 2 6 1

¹ In inches then in millimetres.

COMPLETE TOOL PART NUMBER :
precede with 71233-00 or 71234-00

Nose Assemblies

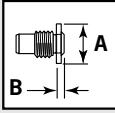
Nose Tips

TYPE 7 NOSE TIPS

NAME	FASTENER		MATERIAL	NOSE TIP (mm)			see below
	\varnothing^1			PART N°	'A'	'B'	
AVIBULB®	1/4	6.4	Any	71233-15001	14.3	3.0	... 0 8 4
AVINOX®	1/4	6.4	Any	71233-15002	14.3	3.0	... 0 8 3

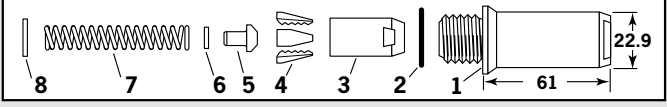
¹ In inches then in millimetres.

NOSE ASSEMBLY
part n° 71233-15000



COMPLETE TOOL PART NUMBER :
precede with
71233-00
or
71234

ITEM	DESCRIPTION	PART N°
1	NOSE CASING	07340-00306
2	O' RING	07003-00067
3	JAW HOUSING	07612-02003
4	JAWS	71230-16101
5	JAW SPREADER	71233-15003
6	BUFFER	07498-03003
7	SPRING	07500-00418
8	LOCKING RING	07340-00327



MAXLOK® NOSE ASSEMBLY

NAME	FASTENER		MATERIAL	NOSE ASSEMBLY PART N°	see below
	\varnothing^1				
MAXLOK®	3/16	4.8	All	07610-02000	... 3 7 1
	1/4	6.4	All	07610-02100	... 3 7 2

¹ In inches then in millimetres.

COMPLETE TOOL PART NUMBER :
precede with 71233-00 or 71234-00

NOSE ASSEMBLY
part n° 07610-02000 for 3/16" \varnothing

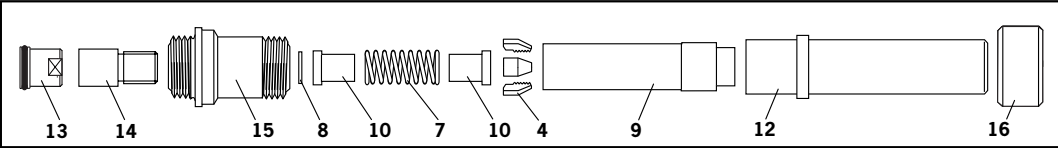
ITEM	DESCRIPTION	PART N°
4	JAWS	07610-02003
7	SPRING	07610-02107
8	LOCKING RING	07610-02004
9	CHUCK COLLET	07610-02002
10	SPRING GUIDE	07220-02104
12	ANVIL	07610-02001

NOSE ASSEMBLY
part n° 07610-02100 for 1/4" \varnothing

ITEM	DESCRIPTION	PART N°
4	JAWS	07610-02103
7	SPRING	07610-02107
8	LOCKING RING	07610-02004
9	CHUCK COLLET	07610-02102
10	SPRING GUIDE	07220-02104
12	ANVIL	07610-02101

ADAPTOR KIT
part n° 71234-03400 for 3/16" \varnothing and 1/4" \varnothing

13	STOP NUT ASSY	71233-20200
14	CHUCK COLLET ADAPTOR	07610-00501
15	ANVIL ADAPTOR	71230-02063
16	ANVIL NUT	07610-00307



READ MAXLOK® 'FITTING INSTRUCTIONS' PAGE 14.

