

Intent of Use

Range of Fasteners

nG3 is a hydro-pneumatic tool designed to place Avdel® breakstem fasteners at high speed making it ideal for batch or flow-line assembly in a wide variety of applications throughout all industries. It can place all fasteners listed opposite.

The tool features a vacuum system for fastener retention and trouble free collection of the spent stems regardless of tool orientation.

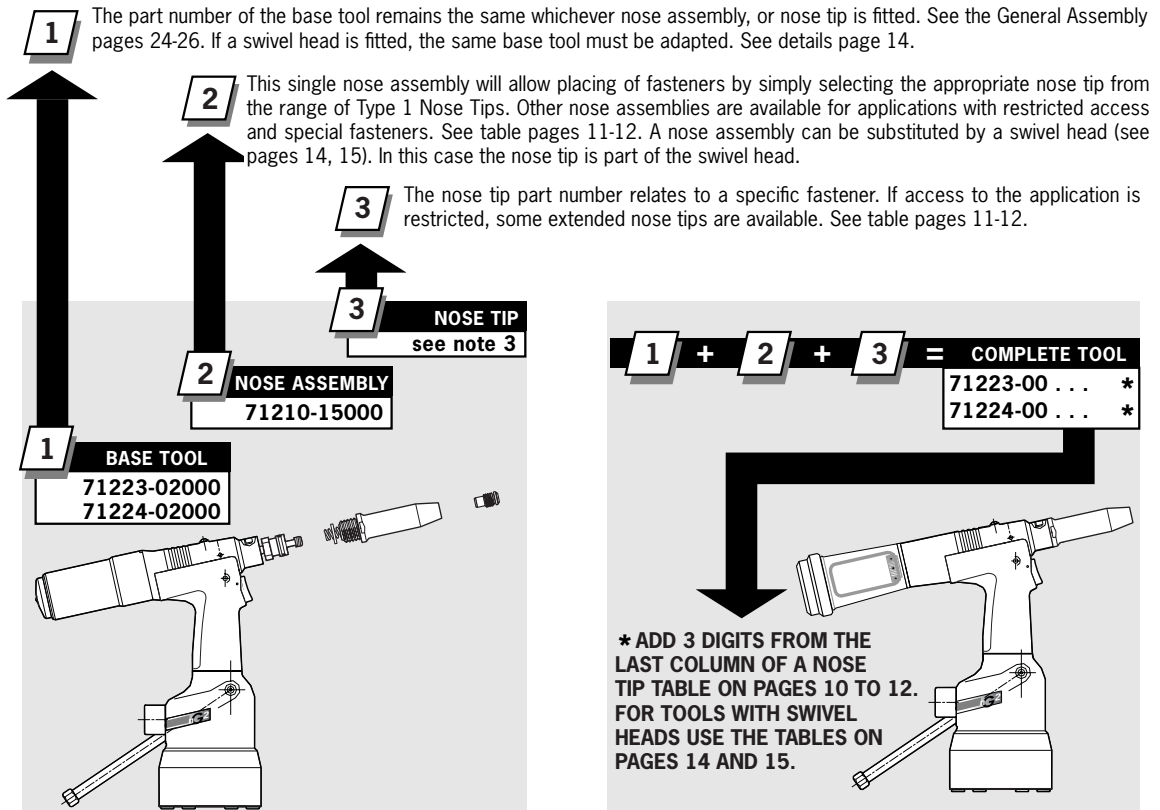
A complete tool is made up of three separate elements which will be supplied individually. See diagram below.

NOSE EQUIPMENT MUST BE FITTED AS DESCRIBED ON PAGE 9.

FASTENER NAME	FASTENER SIZE ($\frac{MM}{IN}$)														
	3	3.2	4.0	4.3	4.8	5	5.2	6	6.4	6.5	7	8	9	9.5	10
	-	$\frac{1}{8}$	$\frac{5}{32}$	-	$\frac{3}{16}$	-	-	-	$\frac{1}{4}$	-	-	-	-	$\frac{3}{8}$	-
AVEX®	●	●	●		●				●						
STAVEX®			●		●				●						
AVINOX® II		●	●		●										
AVIBULB®		●	●		●			●							
ETR							●								
BULBEX®			●		●										
T-LOK®				●	●										
AVDEL® SR		●	●		●				●						
MONOBOLT®					●				●						
INTERLOCK®					●				●						
AVTAINER®									●					●	
*AVSEAL® II								●		●	●	●	●		
Q RIVET		●	●		●				●						
T RIVET					●				●						
AVDELMATE®					●				●						
KLAMP-TITE®					●				●						
KLAMP TITE KTR®					●				●						

*For Avseal® equipment refer to separate Data Sheet 07900-00840

Part Numbering



Nose Assemblies

Nose Tips

IMPORTANT

Nose assemblies do NOT include nose tips. Nose tips must be ordered separately.

TYPE 1 NOSE TIPS

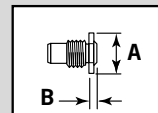
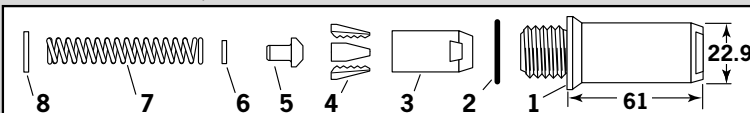
¹ In inches then in millimetres.

² Head forming nose tips for use with countersunk heads ONLY.

NOSE ASSEMBLY part n° 71210-15000

ITEM	DESCRIPTION	PART N°
1	NOSE CASING	07340-00306
2	'O' RING	07003-00067
3	JAW HOUSING	07340-00304
4	JAWS	71210-15001
5	JAW SPREADER	07498-04502
6	BUFFER	71210-05001
7	SPRING	07500-00418
8	LOCKING RING	07340-00327

NAME	FASTENER		NOSE TIP (mm)			see below
	Ø ¹	MATERIAL	PART N°	'A'	'B'	
AVEX®	1/8	3.2 Al Alloy	71210-05002	12.7	4.8	... 001
	1/8	3.2 Steel	71210-16070	12.7	3.3	... 004
	1/8	3.2 Al Alloy	07340-06401 ²	12.7	2.9	... 003
	-	3.0 Al Alloy	71210-05002	12.7	4.8	... 001
	5/32	4.0 Al Alloy	71210-16070	12.7	3.3	... 004
	5/32	4.0 Steel	07381-04701	12.7	2.8	... 010
	5/32	4.0 Al Alloy	07340-06501 ²	12.7	3.3	... 009
	3/16	4.8 Al Alloy	07381-04701	12.7	2.8	... 010
	3/16	4.8 Al Alloy	07340-04800	19.0	3.3	... 016
	3/16	4.8 Steel	07490-04401	12.7	3.3	... 017
Large flange	3/16	4.8 Al Alloy	07340-06601 ²	12.7	4.1	... 015
	1/4	6.4 Al Alloy	07612-02001	12.7	3.3	... 021
MONOBOLT®	3/16	4.8 Any	71210-16020	12.7	4.1	... 200
BULBEX®	5/32	4.0 Al Alloy	71210-16070	12.7	3.3	... 004
	3/16	4.8 Al Alloy	07381-04701	12.7	2.8	... 010
AVINOX®II	1/8	3.2 Stainless Steel	71210-16070	12.7	3.3	... 004
	5/32	4.0 Stainless Steel	07381-04701	12.7	2.8	... 010
	3/16	4.8 Stainless Steel	07498-01401	12.7	4.8	... 082
T-LOK®	-	4.3 Steel	07340-06201	12.7	3.3	... 120
	3/16	4.8 Steel	07340-06201	12.7	3.3	... 120
AVIBULB®	1/8	3.2 Steel	71210-16070	12.7	3.3	... 004
	5/32	4.0 Steel	07381-04701	12.7	2.8	... 010
	3/16	4.8 Steel	07498-01401	12.7	4.8	... 082
	-	6.0 Steel	07612-02001	12.7	3.3	... 021
AVDEL® SR	1/8	3.2 Any	71210-05002	12.7	4.8	... 001
	5/32	4.0 Any	71210-16070	12.7	3.3	... 004
	3/16	4.8 Any	07348-07001	12.7	5.7	... 062
	3/16	4.8 Any	71210-16050	12.7	5.7	... 064
	1/4	6.4 Any	71220-60001	12.7	3.3	... 063
Countersunk	3/16	4.8 Any	07381-04701	12.7	2.8	... 010
INTERLOCK®	1/8	3.2 Steel	71210-16070	12.7	3.3	... 004
	5/32	4.0 Steel	07381-04701	12.7	2.8	... 010
STAVEX®	3/16	4.8 Steel	07381-04701	12.7	2.8	... 010
	3/16	4.8 Steel	07340-04800	19.0	3.3	... 016
	3/16	4.8 Steel	07381-04701	12.7	2.8	... 010
	1/8	3.2 Stainless Steel	71210-16070	12.7	3.3	... 004
	5/32	4.0 Stainless Steel	07381-04701	12.7	2.8	... 010
Q RIVET	3/16	4.8 Stainless Steel	07381-04701	12.7	2.8	... 010
	1/8	3.2 Any	71210-05002	12.7	4.8	... 001
	5/32	4.0 Any	07340-06201	12.7	3.3	... 120
AVDELMATE®	3/16	4.8 Any	07340-06201	12.7	3.3	... 120
	1/4	6.4 Any	07612-02001	12.7	3.3	... 021
	3/16	4.8 Any	07340-06201	12.7	3.3	... 120
	1/4	6.4 Any	07612-02001	12.7	3.3	... 021
KLAMP TITE KTR®	3/16	4.8 Any	71220-16060	12.7	4.8	... 430
	1/4	6.4 Any	71220-16061	12.7	4.8	... 435
KLAMP-TITE®	3/16	4.8 Any	07381-04701	12.7	2.8	... 010
	1/4	6.4 Any	07612-02001	12.7	3.3	... 021
T RIVET	3/16	4.8 Al Alloy	703-A-25-6TA	12.7	6.35	... 380
	3/16	4.8 Al Alloy	703-B-21	12.7	6.35	... 381
	3/16	4.8 Al Alloy/Steel	703-A-25-6T	12.7	6.35	... 383
	3/16	4.8 Al Alloy/Steel	703-B-26	12.7	6.35	... 384
	1/4	6.4 Al Alloy	743-A-25-8TA	12.7	6.65	... 385
	1/4	6.4 Al Alloy	743-B-21	12.7	6.65	... 386
	1/4	6.4 Al Alloy/Steel	743-A-25-8T	12.7	6.65	... 387
	1/4	6.4 Al Alloy/Steel	743-B-26	12.7	6.65	... 388



**COMPLETE TOOL
PART NUMBER :**
precede with
71223-00 or
71224-00

Nose Assemblies

Nose Tips

TYPE 2 NOSE TIPS

NAME	FASTENER		MATERIAL	NOSE TIP (mm)			see below
	Ø ¹			PART N°	'A'	'B'	
AVEX®	1/8	3.2	Aluminium Alloy	07340-02805	9.5	12.95	... 002
	1/8	3.2	Steel	07340-02806	9.5	11.4	... 008
	5/32	4.0	Aluminium Alloy	07340-02806	9.5	11.4	... 008
	5/32	4.0	Steel	07340-02807	12.7	10.0	... 014
	3/16	4.8	Aluminium Alloy	07340-02807	12.7	10.0	... 014
BULBEX®	3/16	4.8	Steel	07340-07301	12.7	11.8	... 018
	5/32	4.0	Aluminium Alloy	07340-02806	9.5	11.4	... 008
T-LOK®	3/16	4.8	Aluminium Alloy	07340-02807	12.7	10.0	... 014
	-	4.3	Steel	07241-07101	12.7	10.0	... 121
STAVEX®	3/16	4.8	Steel	07241-07101	12.7	10.0	... 121
	1/8	3.2	Steel	07340-02806	9.5	11.4	... 008
	5/32	4.0	Steel	07340-02807	12.7	10.0	... 014
	3/16	4.8	Steel	07340-02807	12.7	10.0	... 014
	1/8	3.2	Stainless Steel	07340-02806	9.5	11.4	... 008
AVIBULB®	5/32	4.0	Stainless Steel	07340-02807	12.7	10.0	... 014
	1/8	3.2	Steel	07340-02806	9.5	11.4	... 008
E.T.R	5/32	4.0	Steel	07340-02807	12.7	10.0	... 014
	-	5.2	Steel/Brass	07340-02807	12.7	10.0	... 014

¹ In inches then in millimetres.

TYPE 2 NOSE TIPS ARE EXTENDED TO ALLOW ACCESS INTO APPLICATIONS WHERE TYPE 1 NOSE TIPS WILL NOT REACH.

COMPLETE TOOL PART NUMBER :
precede with
71223-00 or
71224-00

Note: Items **14** and **15** are not required when assembling a Type 2 Nose Tip to the Base Tool nG3 (71223-02000 or 71224-02000).

Nose Assemblies

Nose Tips

TYPE 4 NOSE TIP

FASTENER			NOSE TIP (mm)			see below
NAME	\varnothing^1	MATERIAL	PART N°	'A'	'B'	
MONOBOLT®	1/4	Any	71220-16021	14.3	4.1	... 202

¹ In inches then in millimetres

NOSE ASSEMBLY part n° 71220-15400

ITEM	DESCRIPTION	PART N°	ITEM	DESCRIPTION	PART N°
1	NOSE CASING	07498-00501	10	FRONT SPRING GUIDE	07498-00507
2	'O' RING	07003-00067	7	SPRING	07500-02005
9	CHUCK COLLET	07498-00502	11	REAR SPRING GUIDE	07498-00503
4	JAWS	07497-03002	8	LOCKING RING	07340-00327

COMPLETE TOOL PART NUMBER :
precede with
71223-00 or 71224-00

FITTED TO THIS LONG NOSE ASSEMBLY, THE TYPE 4 NOSE TIP WILL ALLOW THE PLACING OF 1/4" MONOBOLT® FASTENERS IN APPLICATIONS REQUIRING VERY DEEP ACCESS.

TYPE 5 NOSE TIP

FASTENER			NOSE TIP (mm)			see below
NAME	\varnothing^1	MATERIAL	PART N°	'A'	'B'	
AVTAINER®	3/8	Steel	07498-00802	19.1	4.1	... 243

¹ In inches then in millimetres

NOSE ASSEMBLY part n° 71220-15500

ITEM	DESCRIPTION	PART N°	ITEM	DESCRIPTION	PART N°
1	NOSE CASING	07498-00501	7	SPRING	07500-02005
2	'O' RING	07003-00067	11	REAR SPRING GUIDE	07498-00503
9	CHUCK COLLET	07498-00801	8	LOCKING RING	07340-00327
4	JAWS	07220-02302	12	SIDE EJECTION ADAPTOR	07498-00900
10	FRONT SPRING GUIDE	07498-00803	13	VAC SHUT-OFF STOP NUT ASSY	71233-20200

COMPLETE TOOL PART NUMBER :
precede with
71223-00 or 71224-00

THERE IS ONLY ONE TYPE 5 NOSE TIP, SPECIFICALLY DESIGNED TO PLACE AVTAINER® FASTENERS WITH THIS SPECIAL NOSE ASSEMBLY.

TYPE 6 NOSE TIPS

COMPLETE TOOL PART NUMBER PRECEDED WITH:
71223-00 or 71224-00

NOSE ASSEMBLY part n° 71230-15800

ITEM	DESCRIPTION	PART N°
1	NOSE CASING	07340-00306
2	'O' RING	07003-00067
3	JAW HOUSING	07612-02003
4	JAWS	07612-02002
5	JAW SPREADER	07498-04502
6	BUFFER	07498-03003
7	SPRING	07500-00418
8	LOCKING RING	07340-00327

COMPLETE TOOL PART NUMBER PRECEDED WITH:
71223-00 or 71224-00

¹ In inches then in millimetres

Accessories

Swivel Heads

IMPORTANT

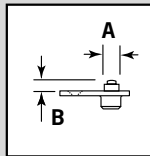
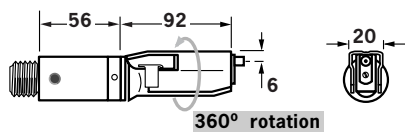
PRIOR to fitting a swivel head, the base tool must be adapted. See Preparing the Base Tool opposite.
In contrast to nose assemblies part numbers of swivel heads do INCLUDE a nose tip as shown below.

Swivel heads are supplied separately for fitting to a base tool forming a complete tool. See table below for part numbers. Jaws and nose tips vary depending on the fastener to be placed but all other components remain the same within each type of swivel head. See the 'capability' tables below and page 15. For the 'Constant Components' table see page 17.

'A' and 'B' dimensions will help you assess the accessibility of your application.

STRAIGHT SWIVEL HEAD capability

NAME	FASTENER		SWIVEL HEAD PART N°	NOSE TIP (mm)		JAWS PART N°	see below
	Ø ¹	MATERIAL		PART N°	'A'		
AVEX®	1/8 : 3.2	Al Alloy	07345-03000	07345-03600	7.87	3.81	07340-00213 ... 001
	1/8 : 3.2	Steel	07345-03100	07345-03700	7.87	3.81	07340-00213 ... 004
	5/32 : 4.0	Al Alloy	07345-03100	07345-03700	7.87	3.81	07340-00213 ... 004
	5/32 : 4.0	Steel	07345-03200	07345-03800	7.87	3.81	07490-04602 ... 010
	3/16 : 4.8	Al Alloy	07345-03200	07345-03800	7.87	3.81	07490-04602 ... 010
BULBEX®	5/32 : 4.0	Al Alloy	07345-03100	07345-03700	7.87	3.81	07340-00213 ... 004
	3/16 : 4.8	Al Alloy	07345-03200	07345-03800	7.87	3.81	07490-04602 ... 010
AVINOX® II	1/8 : 3.2	Stainless Steel	07345-03100	07345-03700	7.87	3.81	07340-00213 ... 004
	5/32 : 4.0	Stainless Steel	07345-03200	07345-03800	7.87	3.81	07490-04602 ... 010
AVSEAL® II	- : 4.0	Al Alloy	71213-06000	71213-16401	6.35	1.95	07340-00213 ... 160
	- : 4.0	Al Alloy	71213-06600	71213-16402 ²	6.35	4.11	07340-00213 ... 180
	- : 5.0	Al Alloy	71213-06100	71213-16403	7.62	2.00	07340-00213 ... 161
	- : 5.0	Al Alloy	71213-06700	71213-16404 ²	7.62	4.11	07340-00213 ... 181
STAVEX®	1/8 : 3.2	Steel	07345-03100	07345-03700	7.87	3.81	07340-00213 ... 004
	5/32 : 4.0	Steel	07345-03200	07345-03800	7.87	3.81	07490-04602 ... 010
	1/8 : 3.2	Stainless Steel	07345-03100	07345-03700	7.87	3.81	07340-00213 ... 004
	5/32 : 4.0	Stainless Steel	07345-03200	07345-03800	7.87	3.81	07490-04602 ... 010



COMPLETE TOOL PART NUMBER :
 precede with 71223-30 or 71224-30
 (the stop nut and safety cap are included)

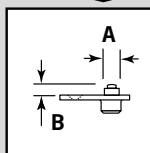
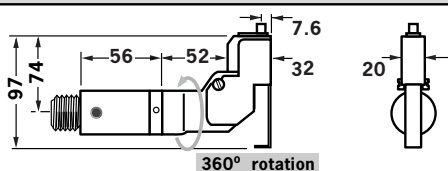
IMPORTANT: in contrast to complete tools with nose assemblies, those fitted with swivel heads include the nose tip as a part of the head.

¹ In inches then in millimetres.

² Long nose tip for deep placing.

RIGHT-ANGLE SWIVEL HEAD capability

NAME	FASTENER		SWIVEL HEAD PART N°	NOSE TIP (mm)		JAWS PART N°	see below
	Ø ¹	MATERIAL		PART N°	'A'		
AVEX®	1/8 : 3.2	Aluminium Alloy	07346-03000	07345-03600	7.87	3.81	07340-00213 ... 001
	1/8 : 3.2	Steel	07346-03100	07345-03700	7.87	3.81	07340-00213 ... 004
	5/32 : 4.0	Aluminium Alloy	07346-03100	07345-03700	7.87	3.81	07340-00213 ... 004
	5/32 : 4.0	Steel	07346-03200	07345-03800	7.87	3.81	07490-04602 ... 010
	3/16 : 4.8	Aluminium Alloy	07346-03200	07345-03800	7.87	3.81	07490-04602 ... 010
BULBEX®	5/32 : 4.0	Aluminium Alloy	07346-03100	07345-03700	7.87	3.81	07340-00213 ... 004
	3/16 : 4.8	Aluminium Alloy	07346-03200	07345-03800	7.87	3.81	07490-04602 ... 010
AVINOX® II	1/8 : 3.2	Stainless Steel	07346-03100	07345-03700	7.87	3.81	07340-00213 ... 004
	5/32 : 4.0	Stainless Steel	07346-03200	07345-03800	7.87	3.81	07490-04602 ... 010
AVSEAL® II	- : 4.0	Aluminium Alloy	71213-04000	71213-16401	6.35	1.95	07340-00213 ... 160
	- : 4.0	Aluminium Alloy	71213-04700	71213-16402 ²	6.35	4.11	07340-00213 ... 180
	- : 5.0	Aluminium Alloy	71213-04100	71213-16403	7.62	2.00	07340-00213 ... 161
	- : 5.0	Aluminium Alloy	71213-04800	71213-16404 ²	7.62	4.11	07340-00213 ... 181
STAVEX®	1/8 : 3.2	Steel	07346-03100	07345-03700	7.87	3.81	07340-00213 ... 004
	5/32 : 4.0	Steel	07346-03200	07345-03800	7.87	3.81	07490-04602 ... 010
	1/8 : 3.2	Stainless Steel	07346-03100	07345-03700	7.87	3.81	07340-00213 ... 004
	5/32 : 4.0	Stainless Steel	07346-03200	07345-03800	7.87	3.81	07490-04602 ... 010



COMPLETE TOOL PART NUMBER :
 precede with 71223-40 or 71224-40
 (the stop nut and safety cap are included)

IMPORTANT: in contrast to complete tools with nose assemblies, those fitted with swivel heads include the nose tip as a part of the head.

¹ In inches then in millimetres.

² Long nose tip for deep placing.