

Intent of Use

The hydro-pneumatic 07287 tool is designed to place Avdel® lockbolt and breakstem fasteners at high speed making it ideal for batch or flow-line assembly in a wide variety of applications throughout all industries.

The 07287 is of the remote intensifier or split tool concept consisting of; Pistol Grip head, Air Oil Intensifiers and Steel Enclosure (see pages 5, 16, 18, 20 and 21).

Pistol Grip type head fitted with a pintail deflector is the standard tool for which a stem catching option and a side ejection accessory are available (see details page 10). It is also possible to order the base tool only (part number 07287-00200) which will not be fitted with a nose assembly.

Tool Selection

07287 TOOL SELECTION						
FASTENER			NOSE TIP TYPE	ADAPTOR	NOSE ASSY PART N°	COMPLETE TOOL PART N°
NAME & HEAD	Ø	MATERIAL/DETAIL				
MAXLOK®	3/16" (4.8mm)	-	-	07267-00900	07610-02000	07287-00001
	1/4" (6.4 mm)	-	-	07267-00900	07610-02100	07287-00002
HEMLOK®	1/4" (6.4mm)	-	Standard	07267-00800	07612-02000	07287-00004
AVTAINER®	3/8" (10 mm)	-	Standard	07267-00800	07498-00800	07287-00006
MONOBOLT®	3/16" (4.8 mm)	-	Standard	07267-00800	07498-04700	07287-00012
	1/4" (6.4 mm)	-	Standard	07267-00800	07498-04600	07287-00014
	1/4" (6.4 mm)	-	Standard	07267-00800	07498-00500	07287-00016
	3/8" (10 mm)	-	Standard	07267-00800	07220-07200	07287-00018
AVEX®	3/16" (4.8 mm)	Steel	Standard	07267-00800	07490-04900	07287-00030
AVINOX® II	3/16" (4.8 mm)	-	Standard	07267-00800	07498-01300	07287-00036
AVDELOK®	3/16" (4.8 mm)	Straight with Vertical Flats	-	07220-02500	07200-02500	07287-00050
	3/16" (4.8 mm)	Straight with Horizontal Flats	-	07220-02500	07200-02700	07287-00051
	1/4" (6.4 mm)	Straight with Vertical Flats	-	07220-02500	07200-02600	07287-00052
	1/4" (6.4 mm)	Straight with Horizontal Flats	-	07220-02500	07200-02800	07287-00053
	1/4" (6.4 mm)	Straight with Horizontal Flats (Stepped)	-	07220-02500	07200-03300	07287-00054
	1/4" (6.4 mm)	Straight Round	-	07220-02500	07200-03500	07287-00055
	5/16" (8.0 mm)	Straight with Horizontal Flats	-	07220-02500	07220-02700	07287-00056
	5/16" (8.0 mm)	Straight with Horizontal Flats (Stepped)	-	07220-02500	07220-03400	07287-00057
	3/8" (10 mm)	Straight Round	-	07220-02500	07220-02000	07287-00058
	3/8" (10 mm)	Straight Round (Stepped)	-	07220-02500	07220-03500	07287-00059

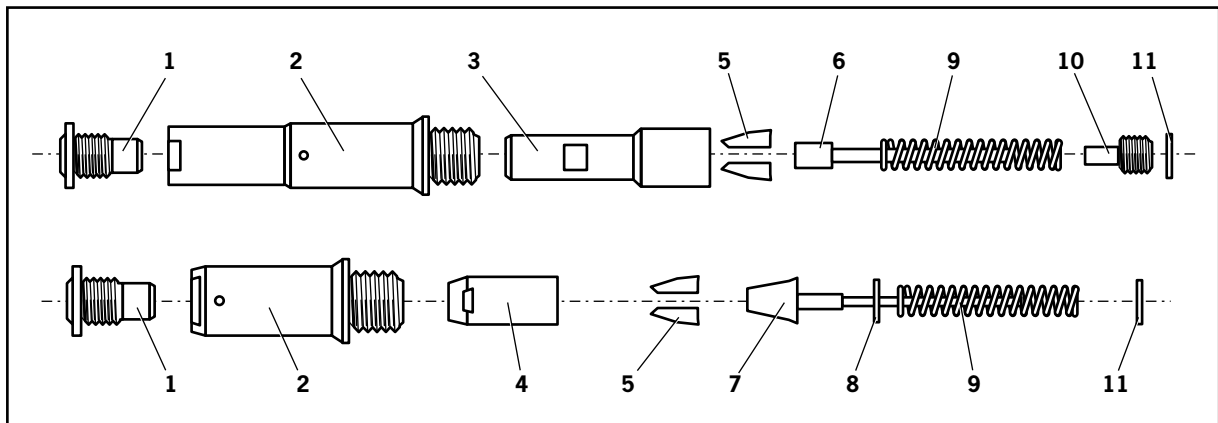
Nose Assemblies

Fitting Instructions

It is essential that the correct nose assembly is fitted prior to operating the tool. By knowing your original complete tool part number or the details of the fastener to be placed, you will be able to order a new complete nose assembly using the selection tables on pages 8 and 9.

IMPORTANT
The air supply must be disconnected when fitting or removing nose assemblies unless specifically instructed otherwise.

- Lightly coat the jaws with Molythium grease.
- Drop Jaws **5** into Jaw Housing **4** or Chuck Collet **3**, depending on whether you have a short or long nose assembly (see table opposite for identification).
- Insert Jaw Spreader **7** into Jaw Housing **4** (locating in the 'V' shape formed by the jaws) or insert front Spring Guide **6** into Chuck Collet **3**.
- Locate Buffer **8** on Jaw Spreader **7**.
- Locate Spring **9** onto Jaw Spreader **7** or onto Front Spring Guide **6**.
- On long nose assemblies, screw Rear Spring Guide **10** into Chuck Collet **3**.
- Fit Locking Ring **11** onto the end plug of the tool.
- Holding tool pointing down, screw on the assembled jaw housing or chuck collet onto the end plug and tighten with spanner.
- Screw Nose Tip **1** into Nose Casing **2**.
- Place Nose Casing **2** over Jaw Housing **4** or Chuck Collet **3** and screw onto tool, tightening with spanner.



07287 Nose Assembly Components

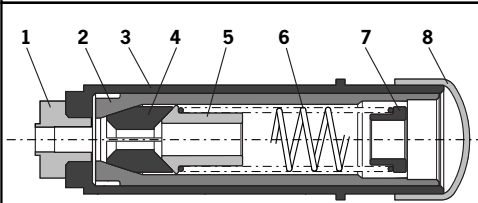
This table lists nose assemblies. Each nose assembly represents a unique assembly of components which can be ordered individually. Component numbers refer to the illustration above. We recommend some stock as items will need regular replacement. Read the Nose Assemblies Servicing Instructions opposite carefully. All nose assemblies also include a locking ring part number 07340-00327.

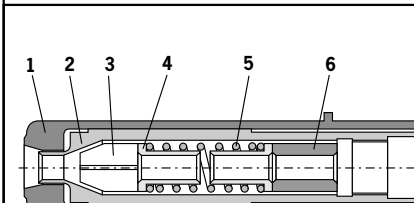
NOSE ASSY	1	2	3	5	6	9	10
07498-00500	07497-03202	07498-00501	07498-00502	07497-03002*	07498-00507	07500-02005	07498-00503

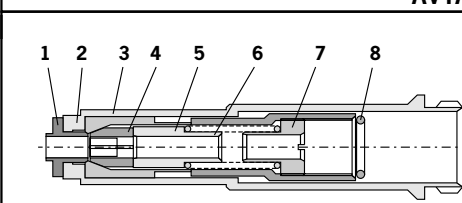
NOSE ASSY	1	2	4	5	7	8	9
07490-04900	07490-04400	07340-00306	07340-00304	07340-07502	07340-07503	07340-01503	07340-01502
07498-01300	07498-01400	07340-00306	07340-00304	07340-07502	07340-07503	07340-01503	07340-01502
07498-04600	07498-03202	07340-00306	07340-00304	07498-04501*	07498-04502	07498-03003	07100-04003
07498-04700	07498-03001	07340-00306	07498-04503	07498-04501*	07498-04900	07498-03003	07100-04003

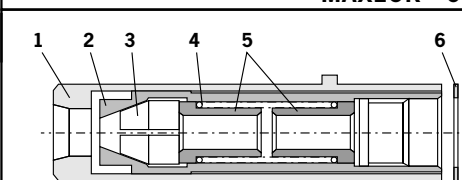
Nose Assemblies

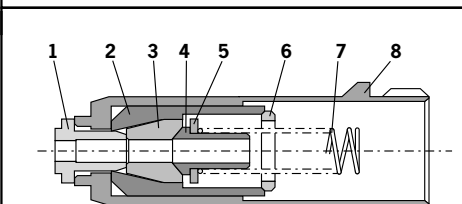
Selection Tables for Monobolt®, Avdelok®, Avtainer®, Maxlok® and Hemlok®

MONOBOLT® 07220-07200				
	ITEM	DESCRIPTION	PART N°	QTY
	1	NOSE TIP	07220-07101	1
	2	JAW HOUSING	07220-06304	1
	3	NOSE CASING	07220-07202	1
	4	JAWS	73411-05001	1 SET
	5	JAW SPREADER	07220-06302	1
	6	SPRING	07220-06305	1
	7	SPRING GUIDE	07220-06301	1
8	DUST COVER	07220-02108	1	

AVDELOK®							
	DESCRIPTION	ANVIL	CHUCK COLLET	CHUCK JAWS	SPRING GUIDE	SPRING	SPACER
	NOSE ASSY	1	2	3	4	5	6
	07200-02500	07200-02501	07200-02101	07220-02102	07220-02104	07220-02103	-
	07200-02600	07200-02601	07200-02201	07220-02302	07220-02104	07220-02103	-
	07200-02700	07200-02701	07200-02101	07220-02102	07220-02104	07220-02103	-
	07200-02800	07200-02801	07200-02201	07220-02302	07220-02104	07220-02103	-
	07200-03300	07200-03301	07200-03302	07220-02302	07220-02104	07220-02103	-
	07200-03500	07200-03501	07200-02201	07220-02302	07220-02104	07220-02103	-
	07220-02000	07220-02001	07200-02002	07220-02003	07220-02603	07220-02605	-
	07220-02700	07200-02601	07220-02701	07220-02606	07220-02603	07220-02605	-
	07220-03400	07220-03401	07220-03402	07220-02606	07220-02603	07220-02605	07220-02604
	07220-03500	07220-03501	07220-03502	07220-02003	07220-02603	07220-02605	-

AVTAINER® 07498-00800				
	ITEM	DESCRIPTION	PART N°	QTY
	1	NOSE TIP	07498-00802	1
	2	NOSE CASING	07498-00501	1
	3	CHUCK COLLET	07498-00801	1
	4	JAWS	07220-02302	1 SET
	5	SPRING GUIDE	07498-00803	1
	6	SPRING	07500-02005	1
	7	THREADED SPRING GUIDE	07498-00503	1
8	LOCKING RING	07340-00327	1	

MAXLOK® 07610-02000 & 07610-02100					
 <p>Anvils are stamped ³/₁₆M" or ¹/₄M" to aid identification</p>	ITEM	DESCRIPTION	07610-02000 PART N°	07610-02100 PART N°	QTY
	1	ANVIL	07610-02001	07610-02101	1
	2	CHUCK COLLET	07610-02002	07610-02102	1
	3	CHUCK JAWS	07610-02003	07610-02103	1 SET
	4	SPRING	07220-02103	07220-02103	1
	5	SPRING GUIDE	07220-02104	07220-02104	1
6	FRICITION RING	07610-02004	07610-020041	1	

HEMLOK® 07612-02000				
	ITEM	DESCRIPTION	PART N°	QTY
	1	NOSE TIP	07612-02001	1
	2	JAW HOUSING	07612-02003	1
	3	JAWS	07612-02002	1 SET
	4	JAW SPREADER	07612-04502	1
	5	BUFFER	07498-03003	1
	6	LOCKING RING	07340-00327	1
	7	SPRING	07007-00458	1
8	NOSE CASING	07340-00306	1	

Servicing Instructions

Nose assemblies should be serviced at weekly intervals.

- Remove the complete nose assembly using the reverse procedure to the 'Fitting instructions'.
- Any worn or damaged part should be replaced by a new part.
- Particularly check wear on jaws.
- Ensure Jaw Spreader **7** assembly tube (where fitted) or Front Spring Guide **6** is not distorted.
- Check Spring **9** is not distorted.
- Assemble according to fitting instructions.

Item numbers in **bold** refer to the Nose Assembly drawing on page 8.