



An Acument™ Global Technologies Company

Service Manual



TX2000

Battery Powered Tool

Contents

Annual Service

| | |
|--------------------|---|
| Service Kit | 4 |
| Before Dismantling | 4 |

Repairs & Major Service

| | |
|-------------------------------------|----|
| Moulded Body Assembly | 5 |
| Pump Assembly | 6 |
| Motor, Gearbox, Electrical Assembly | 6 |
| Head Assembly | 7 |
| Trigger Mechanism | 8 |
| Housing Assembly | 8 |
| Reservoir Assembly | 9 |
| Troubleshooting | 9 |
| Assembly Diagram & Base Tool | 10 |
| Parts List | 11 |

This manual is only for use by Avdel® authorised distributors and repair centres.

IMPORTANT: The warranty is invalidated if the installation tool is not identified with a relevant serial number label. The label is positioned internally, at the base of the handle, on the left moulding, 41. When replacing the moulded body a new label, 83, must be inserted and marked by hand with the tool's original serial number.

Annual Service

Annual/500,000 Cycle Service

- Every 500,000 cycles the tool should be completely dismantled and new components should be used where worn, damaged or recommended. All 'O' rings and seals should be renewed and lubricated with MolyKote 111 grease before assembling.
- For an easy complete service, Avdel offer a complete service kit as detailed below.

Service Kit: 71600-99990

Spanners are specified in inches and across flats unless otherwise stated

| Part No. | Description | Part No. | Description |
|-------------|--|-------------|-----------------------------------|
| 07900-00006 | Spatular | 07900-00748 | Threaded Sleeve Bullet |
| 07900-00008 | $\frac{7}{16} \times \frac{1}{2}$ Spanner | 07900-00747 | Valve Seat Tool |
| 07900-00012 | $\frac{9}{16} \times \frac{5}{8}$ Spanner | 07900-00749 | Threaded Sleeve Tool |
| 07900-00015 | $\frac{5}{8} \times \frac{11}{16}$ Spanner | 07900-00750 | Valve Needle Sleeve |
| 07900-00243 | Screwdriver - Small | 07900-00751 | 3mm Allen Key - Short Reach |
| 07900-00333 | Screwdriver - Medium | 07900-00753 | Circlip Pliers - Small |
| 07900-00469 | 2.5mm Allen Key | 07900-00754 | Priming Pump |
| 07900-00737 | Piston Seal Sleeve | 07900-00755 | Grease - MolyKote 111 - 100g tube |
| 07900-00738 | Piston Seal Tool | 07900-00756 | Loctite® 243 Threadlocker |
| 07900-00739 | Piston Bullet | 07900-00757 | Scalpel |
| 07900-00740 | Cylinder Collar | 07900-00760 | Pozi Screwdriver |
| 07900-00741 | Guide Tube | 07900-00788 | Service Kit Storage Case |
| 07900-00742 | Insertion Rod | 07900-00768 | Reservoir Bullet |
| 07900-00743 | End Cap Assembly Tool | 07900-00769 | Trigger Tool |
| | | 07992-00020 | Grease - Moly-Lithium |

Before dismantling:

- Disconnect the battery before any servicing or dismantling is attempted, unless specifically instructed otherwise.
- Care must be taken at all times to ensure that conditions are clean so that no foreign matter enters the tool or serious damage may result.
- Empty the oil from the tool following the first three steps of the priming procedure. Refer to the priming procedure on pages 14 and 15 of the Instruction Manual.
- Remove the nose equipment.

For a complete service of the tool, we advise that you proceed with dismantling of sub-assemblies in the order shown on page 5. After dismantling the tool we recommend that you replace all seals.

On reassembly it is essential to prime the tool and fit an appropriate nose assembly prior to operating.

Repairs and Major Service

Moulded Body Assembly

IMPORTANT: The warranty is invalidated if the installation tool is not identified with a relevant serial number label. The label is positioned internally, at the base of the handle, on the left moulding, 41. When replacing the moulded body a new label, 83, must be inserted and marked by hand with the tool's original serial number.

The moulded body assembly includes items **1, 2, 33, 41 to 45, 47, 48, 53, 54, 81** and **83**. These parts are only available as a complete Body Moulding Assembly Kit (part number 71600-99600), unless a minimum order quantity is provided in the parts list.

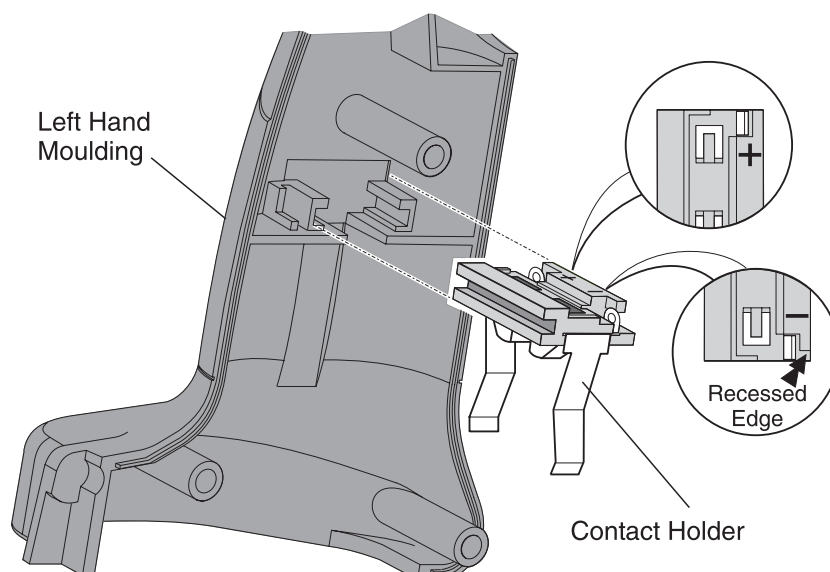
- Remove and discard label **42** from the right moulding **43** to reveal the hidden screw.
- Remove the nose tip spanner **53** and two nose tips from the moulded body.
- Place the tool on its side and using the pozi screwdriver unscrew all eight pozi screws **45** in the moulded body.
- Remove the right moulding **43** leaving the main internal mechanism within the left moulding **41** as shown on page 10.
- Remove the vent screen **54**, battery retainer spring **47** and dowel pin **48** from the left moulding **41**.
- Before removing the main internal mechanism ensure that the electrical control circuit **5** and the reservoir **73** are released from the mounting points within the moulding.
- Holding the tool by the motor and gearbox assembly **3** remove the main internal mechanism from the moulding.

Assemble in reverse order to dismantling noting the following points:

- Place the main internal mechanism into the left moulding **41**, first ensuring that the electrical control circuit **5** and the reservoir **73** are correctly placed within the mounting positions provided. The circuit board must be positioned so that the heat sink is facing forward and the black and blue wires are at the top. The contact holder **4** must be positioned with the positive symbol in the left moulding **41** as shown in the diagram below.
- The contact holder is designed to enable correct orientation in the mouldings. Care must be taken to ensure that the raised portion on the right moulding **43** fits within the indent on the negative side of the contact holder **4**.
- When replacing the right moulding **43** take care to ensure that no wires are trapped and correct alignment with the electrical control circuit **5** and the vent screen **54** are achieved.
- When the moulded body is fully assembled with all eight pozi screws **45**, insert new case label **42** on the right moulding **43**.

IMPORTANT: Correct orientation of the contact holder 4 must be achieved when assembling into mouldings 41 and 43.

Incorrect assembly will cause short circuit and failure of electrical control circuit.



Repairs and Major Service

Pump Assembly

The pump assembly includes items **29, 35, 36, 37, 49, 51** and one of the following plunger seal combinations, either seals (**37** and **50 2 off**) or (**37, 84** and **85**). These parts are only available fully assembled as a complete Pump Assembly Kit (part number 71600-99601), unless a minimum order quantity is provided in the parts list.

- Completely remove the main internal mechanism from the left and right mouldings **41, 43**, as described on page 5.
- To gain access to the pump attachment screws **29** the trigger assembly, items **34, 40**, must be removed. Using the circlip pliers remove one circlip **67** from pin **66**. Push the pin out allowing the trigger lever **34** and trigger button **40** to be removed.
- Hold the main internal mechanism and pump block **51** securely in position and using the 3 mm allen key remove the four attachment screws **29**. Remove the complete pump assembly from the housing **24**. Care must be taken when removing the pump assembly as the plunger **36** will be spring loaded.
- Remove the plunger **36** and spring **35** from the pump block **51** taking care not to damage the seals, plunger surface and the pump block bore.
- Remove 'O' ring **49** from housing **24** and discard.

Assemble in reverse order to dismantling noting the following points:

- Clean the plunger **36** and apply a small amount of Molykote 111 grease to the seals using the spatula.
- Clean the pump block **51** bore and then lubricate with Molykote 111 grease using the spatula.
- Place spring **35** over the sealed plunger, align the end of the plunger with the pump block **51** bore and push into place until the seals are no longer visible. When inserting the plunger take care not to damage the seals on the rim of the pump block bore.
- Apply a light film of Loctite® 243 threadlocker to all four screws **29**.
- Attach the pump assembly onto the housing **24** as before using four screws **29** and the 3 mm allen key.
- Finally assemble the trigger assembly, items **34, 40**, and pin **66** in reverse order to dismantling.

Motor, Gearbox and Electrical Assembly

The motor, gearbox and electrical assembly includes items **3, 4, 5, 28, 38** and **52**. These parts are only available as a complete assembly (part number 71600-99602), unless a minimum order quantity is provided in the parts list.

- Completely remove the main internal mechanism from the left and right mouldings **41, 43**, as described on page 5.
- Remove the 'pump assembly' as described above.
- Using the small screwdriver remove the two screws **28** that retain the micro-switch to the switch bracket **27**.
- Using the 3 mm allen key remove all three screws **38** and washers **52** attaching the gearbox to the housing **24**.
- Remove the complete motor, gearbox and electrical assembly **3, 4** and **5** from the housing **24**.

Assemble in reverse order of dismantling noting the following points:

- Ensure that the motor and gearbox assembly, when connected to the housing **24**, is orientated so that the groove in the gearbox mounting plate is at the top.
- Apply Loctite® 243 threadlocker to all three screws **38**.
- DO NOT USE UNDUE FORCE when inserting the three screws **38** into the housing **24**.

Repairs and Major Service

Head Assembly

The head assembly consists of three assembly kits, Cylinder Assembly Kit (part number 71600-99603), Piston Assembly Kit (part number 71600-99604) and Head Seal Kit (part number 71600-99605) containing items **6 to 18, 21, 22, 23, 30** and **32**. These parts are only available as complete kits unless a minimum order quantity is provided in the parts list.

- Completely remove the main internal mechanism from the left and right mouldings **41, 43**, as described on page 5.
- Remove the complete motor, gearbox and electrical assembly **3, 4** and **5** as described on page 6.
- Unscrew locknut **31** and jaw spreader housing **20** from the piston **18**.
- Using the 3 mm and 2.5 mm allen keys remove screws **11, 23, 30**, clamping the cylinder **32** to the housing **24**.
- Remove the head assembly from the housing. Remove 'O' ring **56** from the housing and discard.
- Grip the head assembly in a vice using soft jaws to avoid damage.
- Using the end cap assembly tool unscrew and remove the cylinder cap assembly, items **6, 7, 8, 9** from the rear of the cylinder **32**. Care must be taken as the cylinder cap **7** will be spring loaded.
- Remove and discard the spring **10** from inside the cylinder **32**.
- Push the piston **18** to the rear and out of the cylinder **32** taking care not to damage the cylinder bore.
- Using the medium screwdriver enter the rear of the cylinder **32**, lever the rod seal **15** from the groove and cut through with a scalpel taking care not to damage the cylinder bore or the seal groove. Using the spatula push the rod seal, followed by bearing ring **16** and 'O' ring **17** to the rear and out of the cylinder. If at any time the cylinder bore or seal groove become damaged the cylinder must be replaced.
- Using a scalpel cut through and remove the piston seal **14** from the piston **18**. Then remove bearing ring **13** and 'O' ring **12**. Take care not to damage the piston when cutting the seal.

Assemble in reverse order to dismantling noting the following points:

- Clean all components before assembling.
- To aid assembly of seals apply a light coating of Molykote 111 grease to both the seals and the assembly tools.
- Lubricate the cylinder **32** bore and seal grooves with Molykote 111 grease. Insert the bearing ring **16** into place within cylinder. With the aid of the spatula insert the 'O' ring **17**. Place the rod seal **15** onto the insertion rod ensuring correct orientation. Push the guide tube into the cylinder bore and push the insertion rod with the seal into place through the guide tube ensuring seal is correctly seated. Pull the insertion rod out then the guide tube.
- Lubricate the piston **18** shaft and seal grooves with Molykote 111 grease and fit 'O' ring **12** and bearing ring **13**. Place the piston seal sleeve over the piston shaft, then slide the piston seal **14** over the sleeve and into position using the piston seal tool ensuring correct orientation.
- Insert the cylinder collar into the back of the cylinder **32**. Screw the piston bullet onto the piston **18** and push the piston with the seals through the cylinder collar as far as it will go. Unscrew the bullet off the piston and remove the cylinder collar.
- Apply a light coating of Moly-lithium grease to the surface and ends of the spring **10** before inserting onto the piston **18** within the cylinder.
- Screw the cylinder cap assembly, items **6, 7, 8, 9**, into the cylinder **32** using the 'T'-bar and end cap assembly tool.
- Insert 'O' ring **56** into the housing and lubricate with Molykote 111 grease.
- Fit the head assembly to the housing **24** using the three screws **11, 23, 30**, coated with Loctite® 243 threadlocker.
- When inserting jaw spreader housing **20** onto piston **18**, screw down fully until it bottoms out on the end of the piston shaft. Secure jaw spreader housing **20** using locknut **31**.

Repairs and Major Service

Trigger Mechanism

The trigger mechanism includes items **34, 40, 58 to 69**. These parts are only available as a complete Trigger Mechanism Kit (part number 71600-99606), unless a minimum order quantity is provided in the parts list.

- Completely remove the main internal mechanism from the left and right mouldings **41, 43**, as described on page 5.
- Using the circlip pliers remove one circlip **67** from pin **66**. Push the pin out allowing the trigger lever **34** and trigger button **40** to be removed.
- Using the circlip pliers carefully remove circlip **68** from the valve needle **61**, followed by shim **69**, trigger plate **65** and spring **60**. Discard the spring **60**.
- Using the threaded sleeve tool unscrew and remove the threaded sleeve **64** from the housing **24**. Remove 'O' ring **62** from the threaded sleeve and discard.
- Remove the valve needle **61** from the housing **24**, then remove and discard the spring **60** from the valve needle **61**. Using a scalpel cut 'O' ring **63** from the valve needle taking care not to damage the seal groove.
- Using the valve seat tool unscrew the valve seat **59** and remove from the housing **24**. Remove bonded seal **58** from valve seat and discard.

Assemble in reverse order to dismantling noting the following points:

- Clean all components before assembling.
- Lubricate valve needle **61** shaft and seal groove with Molykote 111 grease and place the valve needle tool over the end of the valve needle **61**. Slide 'O' ring **63** over the valve needle sleeve and into the seal groove on valve needle. Remove the valve needle sleeve from the valve needle.
- Lubricate threaded sleeve **64** with Molykote 111 grease and place the threaded sleeve bullet over the end of the threaded sleeve. Slide 'O' ring **62** over the threaded sleeve bullet and into the seal groove on threaded sleeve. Remove bullet from threaded sleeve.
- DO NOT USE UNDUE FORCE when inserting the valve seat **59** into the housing **24**.
- When fitting threaded sleeve **64** into housing **24**, ensure the component is screwed fully down until stopping against the valve seat **59**.
- When fitting trigger plate **65**, ensure correct orientation is achieved.
- Using the trigger tool and pin **66** in place of the trigger lever **34**, fully compress the trigger plate **65** into the threaded sleeve **64** against the spring **60**. The end of the valve needle **61** will become exposed. Place the shim **69** over the valve needle and then insert the circlip **68** into the groove using the circlip pliers. Release and remove the trigger tool.

Housing Assembly

The housing assembly consists of items **24 to 27**, and **38**, all of which are available as individual parts, subject to a minimum order quantity. The assembly also contains items **39, 55, 56, 57, 70, 75** and **76**. These parts are only available as a complete Housing Hydraulic Kit (part number 71600-99607).

- Completely remove the main internal mechanism from the left and right mouldings **41, 43**, as described on page 5.
- Do not remove screws **25, 38**, from the housing **24**.
- Using medium screwdriver unscrew seal screw **75** from housing **24**. Remove 'O' ring **76** from seal screw.
- Using medium screwdriver unscrew inlet check valve **70** from housing **24**.
- In order to remove outlet check valve **55** the head assembly must be removed as described on page 7.
- Using medium screwdriver unscrew outlet check valve **55** from housing **24**. Remove 'O' ring **57** from outlet check valve and discard.
- Assemble in reverse order to dismantling.

Repairs and Major Service

Reservoir Assembly

The reservoir assembly includes items **21, 22, 25, 78, 82** and **71** to **74**. These parts are only available as a complete Reservoir Assembly Kit (part number 71600-99608), unless a minimum order quantity is provided in the parts list.

- Completely remove the main internal mechanism from the left and right mouldings **41, 43**, as described on page 5.
- Using the 3 mm allen key remove screw **21** and bonded seal **22** from reservoir **73**.
- Using the spatular remove 'O' ring **72** from reservoir **73** and discard.
- Remove reservoir **73** from reservoir adapter **74**.
- Using the 2.5 mm allen key, remove screw **25** attaching reservoir adapter **74** to housing **24**.
- Remove reservoir adapter **74** from housing **24**.
- Remove 'O' ring **71** from reservoir adapter **74** and discard.
- Do not remove the filter **78**, or the 'O' ring **82**, from the reservoir adapter **74** unless damaged. If removed discard both items.

Assemble in reverse order to dismantling noting the following points:

- Lubricate both 'O' ring **71** and seal groove on reservoir adapter. Place 'O' ring **71** in reservoir adapter **74**.
- Using 2.5 mm allen key and screw **25** fit reservoir adapter **74** to housing noting correct orientation with the holes.
- Slide open end of reservoir **73** over reservoir adapter **74** and into position within the groove.
- Place the reservoir bullet over the closed end of reservoir **73**. Slide 'O' ring **72** completely over the bullet until it falls into place around the end of the reservoir **73**, holding it in securely around the reservoir adapter **74**.
- Ensure that the reservoir **73** is correctly positioned on the reservoir adapter **74**, so that the flat face on the metal part of the reservoir is at the top.

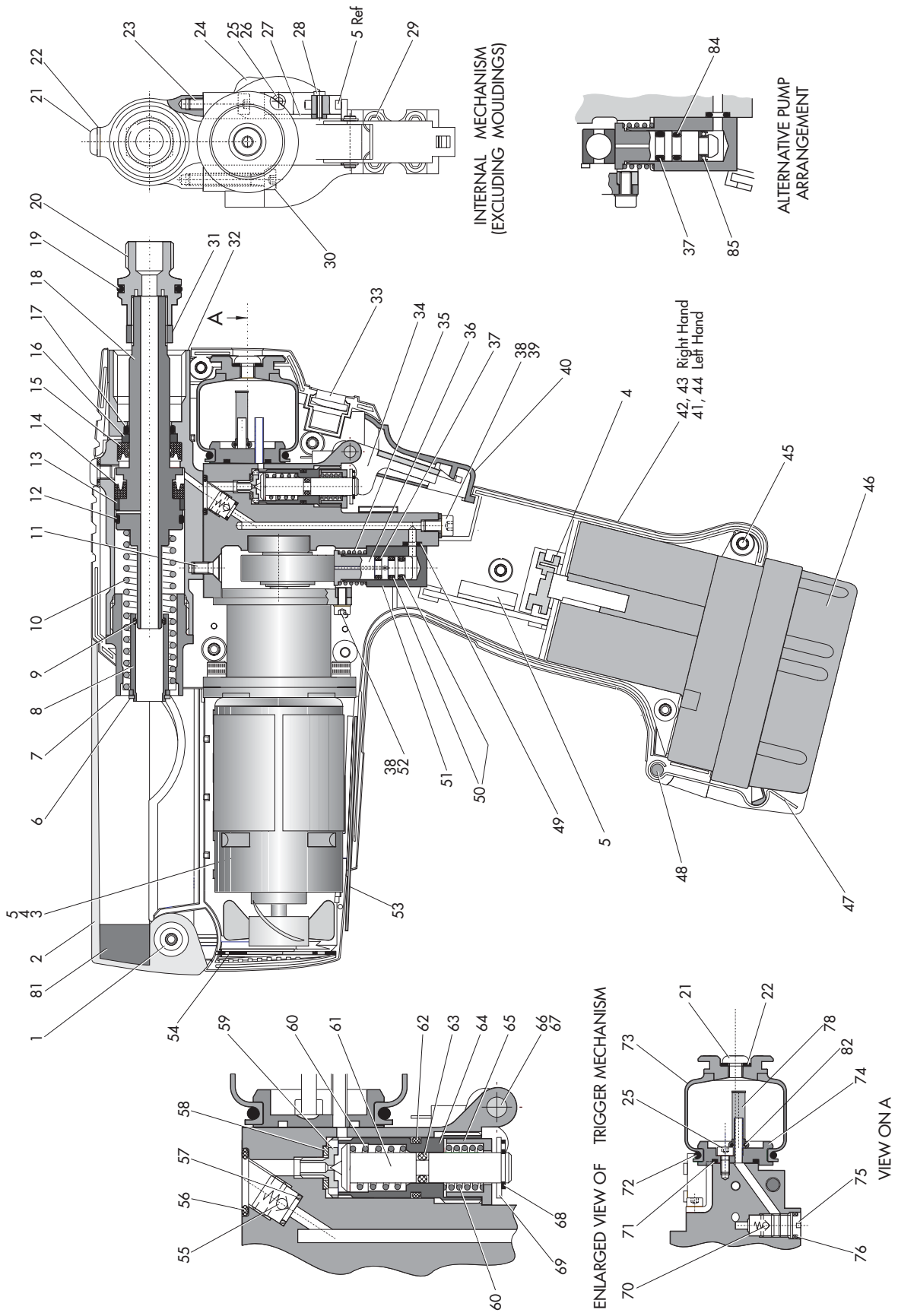
IMPORTANT: Check the tool against daily and weekly servicing.

Priming is ALWAYS necessary after the tool has been dismantled and prior to operating.

Troubleshooting

| Symptom | Possible Cause | Remedy | Page Ref |
|--|------------------------------------|--|----------|
| Fastener fails to break | Trigger mechanism springs worn | Replace trigger mechanism | 8 |
| Jaws will not release broken stem of fastener | Damaged spring in head assembly | Fit new spring | 7 |
| Tool fails to operate - motor operational: if head piston static if head piston pulsing | Pump plunger jammed | Replace pump spring | 6 |
| | Inlet check valve faulty | Replace inlet check valve | 8 |
| | Outlet check valve faulty | Replace outlet check valve | 8 |
| Tool fails to operate - motor not operational | Motor or gearbox failure | Test and replace any defective equipment | 6 |
| | Electrical control circuit failure | Test and replace any defective equipment | 6 |

General Assembly of Base Tool 71600-02000



Parts List

| ITEM | PART N° | DESCRIPTION | QTY | SPARES | MIN ORDER QTY | ITEM | PART N° | DESCRIPTION | QTY | SPARES | MIN ORDER QTY |
|------|-------------|----------------------------|-----|--------|---------------|------|-------------|---|-----|--------|---------------|
| 1 | 71600-02004 | Lid torsion spring | 1 | ✓ | 50 | 45 | 07001-00652 | Pozi screw | 8 | ✓ | 50 |
| 2 | 71600-02003 | Collector lid | 1 | 9 | | 46 | 07007-01954 | Battery | 1 | ✓ | 1 |
| 3 | 71600-03130 | Motor & gearbox assembly | 1 | 1 | | 47 | 71600-02022 | Battery retainer spring | 1 | ✓ | 10 |
| 4 | 71600-03110 | Contact holder | 1 | 1 | | 48 | 07007-01957 | Dowel pin | 1 | ✓ | 50 |
| 5 | 71600-03110 | Electrical control circuit | 1 | 1 | | 49 | 07003-00353 | O-ring | 1 | ✓ | 50 |
| 6 | 07004-00102 | Circlip | 1 | ✓ | 50 | 50 | 07003-00351 | O-ring | 2 | 2 | |
| 7 | 71600-02016 | Cylinder cap | 1 | 7 | | 51 | 71600-03202 | Pump block | 1 | 2 | |
| 8 | 71600-02015 | Piston sleeve | 1 | 7 | | 52 | 07002-00156 | Steel washer | 3 | ✓ | 50 |
| 9 | 07003-00350 | O-ring | 1 | 8 | | 53 | 71600-02024 | Nose tip spanner | 1 | ✓ | 10 |
| 10 | 71600-02012 | Compression spring | 1 | 7 | | 54 | 71600-02025 | Vent screen | 1 | 9 | |
| 11 | 07001-00650 | Socket csk head screw | 1 | ✓ | 50 | 55 | 07007-01956 | Outlet check valve | 1 | 5 | |
| 12 | 07003-00364 | O-ring (piston) | 1 | 8 | | 56 | 07007-00365 | O-ring (housing) | 1 | 5 | 8 |
| 13 | 07003-00361 | Piston bearing ring | 1 | 8 | | 57 | 07003-00359 | O-ring for item 55 | 1 | 5 | |
| 14 | 07003-00243 | Piston seal | 1 | 8 | | 58 | 07003-00355 | Bonded seal | 1 | 4 | |
| 15 | 07003-00273 | Rod seal | 1 | 8 | | 59 | 71600-02019 | Valve seat | 1 | 4 | |
| 16 | 07003-00362 | Cylinder bearing ring | 1 | 8 | | 60 | 71600-02029 | Compression spring | 2 | 4 | |
| 17 | 07003-00363 | O-ring (cylinder) | 1 | 8 | | 61 | 71600-02017 | Valve needle | 1 | 4 | |
| 18 | 71600-02011 | Piston | 1 | 7 | | 62 | 07003-00354 | O-ring | 1 | 4 | |
| 19 | 07003-00277 | O-ring | 1 | ✓ | 50 | 63 | 07003-00352 | O-ring | 1 | 4 | |
| 20 | 71210-02101 | Jaw spreader housing | 1 | ✓ | 1 | 64 | 71600-02018 | Threaded sleeve | 1 | 4 | |
| 21 | 07001-00654 | Button head screw | 2 | ✓ | 50 | 65 | 71600-02020 | Trigger plate | 1 | 4 | 3&6 |
| 22 | 07003-00194 | Bonded seal | 2 | ✓ | 50 | 66 | 71600-02021 | Pin | 1 | 4 | 3&6 |
| 23 | 07001-00646 | Socket cap head screw | 1 | ✓ | 50 | 67 | 07004-00104 | Circlip | 2 | ✓ | 50 |
| 24 | 71600-02009 | Housing | 1 | ✓ | 1 | 68 | 07004-00103 | Circlip | 1 | ✓ | 50 |
| 25 | 07001-00647 | Socket cap head screw | 2 | ✓ | 50 | 69 | 07002-00157 | Steel shim washer | 1 | 4 | |
| 26 | 07002-00155 | Steel washer | 1 | ✓ | 50 | 70 | 07007-01958 | Inlet check valve | 1 | 5 | |
| 27 | 71600-02014 | Switch bracket | 1 | ✓ | 10 | 71 | 07003-00349 | O-ring | 1 | 3 | |
| 28 | 07001-00648 | Slotted cheese head screw | 2 | ✓ | 50 | 72 | 07003-00170 | O-ring | 1 | 3 | |
| 29 | 07001-00651 | Socket cap head screw | 4 | ✓ | 50 | 73 | 71600-03310 | Reservoir | 1 | 3 | |
| 30 | 07001-00645 | Socket cap head screw | 1 | ✓ | 50 | 74 | 71600-03304 | Reservoir adapter | 1 | 3 | |
| 31 | 71600-02026 | Locknut | 1 | ✓ | 10 | 75 | 71600-02013 | Seal screw | 1 | ✓ | 1 |
| 32 | 71600-02010 | Cylinder | 1 | 6 | | 76 | 07003-00358 | O-ring | 1 | 5 | |
| 33 | 71600-02023 | Nose tip holder | 1 | 9 | | 77 | 07007-01965 | Battery charger - 220/240V-50Hz (UK) | 1 | ✓ | 1 |
| 34 | 71600-03403 | Trigger lever | 1 | 4 | | | 07007-01966 | Battery charger - 220/240V-50Hz (Europe) | 1 | ✓ | 1 |
| 35 | 71600-03203 | Compression spring | 1 | 2 | | | 07007-01967 | Battery charger - 220/240V-50Hz (Australia) | 1 | ✓ | 1 |
| 36 | 71600-03201 | Plunger | 1 | 2 | | | 07007-01968 | Battery charger - 110V-60Hz (USA, Canada) | 1 | ✓ | 1 |
| 37 | 07003-00366 | O-ring | 1 | 2 | | | 07007-01969 | Battery charger - 100V-50/60Hz (Japan) | 1 | ✓ | 1 |
| 38 | 07001-00649 | Socket cap head screw | 4 | ✓ | 50 | 78 | 07007-01980 | Filter | 1 | 3 | |
| 39 | 07003-00360 | Bonded seal | 1 | 5 | | 79 | 07007-01960 | Storage case | 1 | ✓ | 1 |
| 40 | 71600-03401 | Trigger button | 1 | 4 | | 80 | 07900-00759 | Tool Instruction Manual - UK version | 1 | ✓ | 1 |
| 41 | 71600-02002 | Left moulding | 1 | 9 | | 81 | 71600-02031 | Collector lid buffer | 1 | 9 | |
| 42 | 71600-02028 | Case label RH | 2 | ✓ | 10 | 82 | 07003-00371 | 'O' Ring | 1 | 3 | |
| 43 | 71600-02001 | Right moulding | 1 | 9 | | 83 | 71600-02035 | Blank serial number label | 1 | ✓ | 50 |
| 44 | 71600-02027 | Case label LH | 1 | ✓ | 10 | 84 | 07003-00373 | Energised PTFE seal | 1 | 2 | |
| | | | | | | 85 | 07003-00372 | Energised lip seal | 1 | 2 | |

Note

- Motor, Gearbox and Electrical Assembly (part number 71600-99602). These items are only available as a complete assembly kit unless a minimum order quantity is stated.
 - Pump Assembly Kit (part number 71600-99601). These items are only available as a complete assembly unless a minimum order quantity is stated.
 - Reservoir Assembly Kit (part number 71600-99608). These items are only available as a complete assembly kit unless a minimum order quantity is stated.
 - Trigger Mechanism Kit (part number 71600-99606). These items are only available as a complete assembly kit unless a minimum order quantity is stated.
 - Housing Hydraulic Kit (part number 71600-99607). These items are only available as a complete kit.
 - Cylinder Assembly Kit (part number 71600-99603). These items are only available as a complete assembly kit unless a minimum order quantity is stated.
 - Piston Assembly Kit (part number 71600-99604). These items are only available as a complete assembly kit unless a minimum order quantity is stated.
 - Head Seal Kit (part number 71600-99605). These items are only available as a complete assembly kit unless a minimum order quantity is stated.
 - Body Moulding Assembly Kit (part number 71600-99600). These items are only available as a complete assembly kit unless a minimum order quantity is stated.
- ✓ These items are available as individual spares subject to the minimum order quantity - refer to Avdel sales.

Notes

Notes

Notes

Declaration of Conformity

We, Avdel UK Limited, Watchmead Industrial Estate, Welwyn Garden City, Herts, AL7 1LY declare under our sole responsibility that the product:

Model TX2000

Serial No.

to which this declaration relates is in conformity with the following standards:

TX2000 Tool

EN ISO 12100 - parts 1 & 2
EN 50260 - part 1
BS EN 982
BS EN ISO 8662 - part 6
BS EN ISO 3744
ISO EN 792 part 13 - 2000
BS EN ISO 11202
BS EN 55014 part 1 & 2
BS EN 50081 part 1

Battery Charger

VDE0700
EN 60335-1
EN 60335-2-29
EN 60742/0695
EN 50081-1
EN 55014
EN 60555-2/3
EN 50082-1
EN 55104

following the provisions of the Machine Directive 89/392/EC
(as amended by Directive 91/368/EC, 93/44/EC and 93/68/EC)
and superseded by 98/37/EC



A. Seewraj - Product Engineering Manager - Automation Tools

Date of issue



**This box contains a power tool which is in conformity with
Machines Directive 89/392/EC. The 'Declaration of
Conformity' is contained within.**



An Acument™ Global Technologies Company

AUSTRALIA

Acument Australia Pty Ltd.

891 Wellington Road
Rowville, Victoria 3178
Tel: +61 3 9765 6400
Fax: +61 3 9765 6445
Email: info@acument.com.au

CANADA

**Avdel Canada, a Division of Acument
Canada Limited**

87 Disco Road
Rexdale
Ontario M9W 1M3
Tel: +1 416 679 0622
Fax: +1 416 679 0678
Email: infoAvdel-Canada@acument.com

CHINA

Acument China Ltd.

RM 1708, 17/F., Nanyang Plaza,
57 Hung To Rd., Kwun Tong
Hong Kong
Tel: +852 2950 0631
Fax: +852 2950 0022
Email: info@acument.com.hk

FRANCE

Avdel France S.A.S.

33 bis, rue des Ardennes
BP4
75921 Paris Cedex 19
Tel: +33 (0) 1 4040 8000
Fax: +33 (0) 1 4208 2450
Email: AvdelFrance@acument.com

GERMANY

Avdel Deutschland GmbH

Klusriede 24
30851 Langenhagen
Tel: +49 (0) 511 7288 0
Fax: +49 (0) 511 7288 133
Email: AvdelDeutschland@acument.com

ITALY

Avdel Italia S.r.l.

Viale Lombardia 51/53
20047 Brugherio (MI)
Tel: +39 039 289911
Fax: +39 039 2873079
Email: vendite@acument.com

JAPAN

Acument Japan Kabushiki Kaisha

Center Minami SKY,
3-1 Chigasaki-Chuo, Tsuzuki-ku,
Yokohama-city, Kanagawa Prefecture
Japan 224-0032
Tel: +81 45 947 1200
Fax: +81 45 947 1205
Email: info@acument.com.jp

SINGAPORE

Acument Asia Pacific (Pte) Ltd.

#05-03/06 Techlink
31 Kaki Bukit Road 3
Singapore, 417818
Tel: +65 6840 7431
Fax: +65 6840 7409
Email: Tlim@acument.com

SOUTH KOREA

Acument Korea Ltd.

212-4, Suyang-Ri,
Silchon-Eup, Kwangju-City,
Kyunggi-Do, Korea, 464-874
Tel: +82 31 798 6340
Fax: +82 31 798 6342
Email: info@acumentkorea.com

SPAIN

Avdel Spain S.A.

C/ Puerto de la Morcuera, 14
Poligono Industrial Prado Overa
Ctra. de Toledo, km 7,8
28919 Leganés (Madrid)
Tel: +34 (0) 91 3416767
Fax: +34 (0) 91 3416740
Email: ventas@acument.com

UNITED KINGDOM

Avdel UK Limited

Pacific House
2 Swiftfields
Watchmead Industrial Estate
Welwyn Garden City
Hertfordshire
AL7 1LY
Tel: +44 (0) 1707 292000
Fax: +44 (0) 1707 292199
Email: enquiries@acument.com

USA

Avdel USA LLC

614 NC Highway 200 South
Stanfield,
North Carolina 28163
Tel: +1 704 888-7100
Fax: +1 704 888-0258
Email: infoAvdel-USA@acument.com

© Avdel UK Limited 2007

| Manual No. | Issue | Change Note No. |
|-------------|-------|-----------------|
| 07900-00790 | AB | 03/022 |
| | B | 07/044 |
| | B2 | 07/142 |
| | | |