

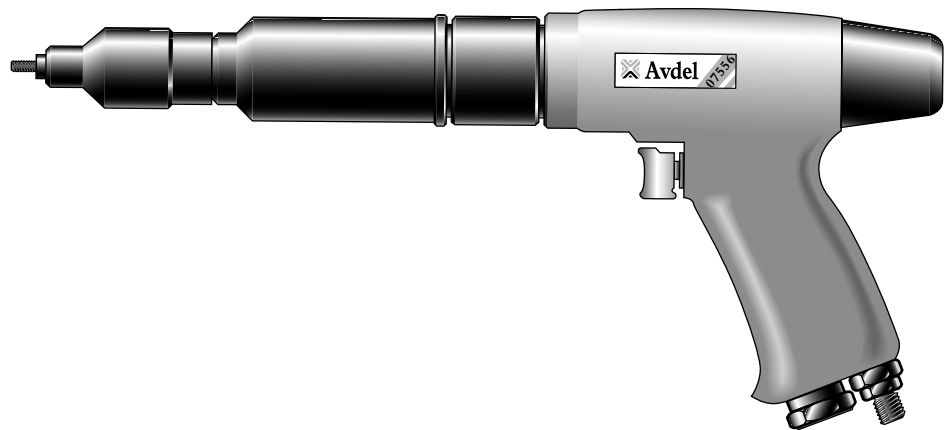


An Acument™ Global Technologies Company



Instruction Manual

Pass onto user to read and keep for reference



Threaded Insert Power Tool

07556

AVDEL policy is one of continuous development. Specifications shown in this document may be subject to changes which may be introduced after publication. For the latest information always consult Avdel.

SPECIFICATIONS FOR 07556 TOOL

AIR PRESSURE	■	Minimum - Maximum	■	5 - 8 bar	■	75 - 120 lbf/in ²
FREE AIR VOLUME REQUIRED	■	@ 5 bar / 75 lbf/in ²	■	510 litres/min	■	18 ft ³ /min
MOTOR SPEED	■	@ 75 lb/in ²	■	1000 RPM	■	(clockwise)
CYCLE TIME	■	Approximately	■	3 seconds	■	
NOISE LEVEL	■		■	80 dB(A)	■	
WEIGHT	■	Without nose equipment	■	1.76 kg	■	3.9 lb
VIBRATION	■	Less than	■	2.5 m/s ²	■	8 ft/s ²

SAFETY

General	2
Specific to 07556 Tool	3

INTENT OF USE

General	4
Tool Dimensions / Selection	4-5

PUTTING INTO SERVICE

Air Supply	6
Operating Procedure	6
Clutch Adjustment - Accessories	7

NOSE ASSEMBLIES

Fitting/Service/Components	8-9
----------------------------	-----

SERVICING

Regular Servicing	10
Maintenance	11-13
General Assembly & Parts List	14-15

FAULT DIAGNOSIS

Fault Diagnosis Table	16
-----------------------	----

S A F E T Y

This instruction manual must be read with particular attention to the following safety rules, by any person installing, operating or servicing this tool.

⚠ DO NOT USE OUTSIDE THE DESIGN INTENT.

⚠ DO NOT USE EQUIPMENT WITH THIS TOOL/MACHINE OTHER THAN THAT RECOMMENDED AND SUPPLIED BY AVDEL.

⚠ ANY MODIFICATION UNDERTAKEN BY THE CUSTOMER TO THE TOOL/MACHINE, NOSE ASSEMBLIES, ACCESSORIES OR ANY EQUIPMENT SUPPLIED BY AVDEL OR THEIR REPRESENTATIVES, SHALL BE THE CUSTOMER'S ENTIRE RESPONSIBILITY. AVDEL WILL BE PLEASED TO ADVISE UPON ANY PROPOSED MODIFICATION.

⚠ THE TOOL/MACHINE MUST BE MAINTAINED IN A SAFE WORKING CONDITION AT ALL TIMES AND EXAMINED AT REGULAR INTERVALS FOR DAMAGE AND FUNCTION BY TRAINED COMPETENT PERSONNEL. ANY DISMANTLING PROCEDURE SHALL BE UNDERTAKEN ONLY BY PERSONNEL TRAINED IN AVDEL PROCEDURES. DO NOT DISMANTLE THIS TOOL/MACHINE WITHOUT PRIOR REFERENCE TO THE MAINTENANCE INSTRUCTIONS. CONTACT AVDEL WITH YOUR TRAINING REQUIREMENTS.

⚠ THE TOOL/MACHINE SHALL AT ALL TIMES BE OPERATED IN ACCORDANCE WITH RELEVANT HEALTH AND SAFETY LEGISLATION. IN THE U.K. THE "HEALTH AND SAFETY AT WORK ETC. ACT 1974" APPLIES. ANY QUESTION REGARDING THE CORRECT OPERATION OF THE TOOL/MACHINE AND OPERATOR SAFETY SHOULD BE DIRECTED TO AVDEL.

⚠ THE PRECAUTIONS TO BE OBSERVED WHEN USING THIS TOOL/MACHINE MUST BE EXPLAINED BY THE CUSTOMER TO ALL OPERATORS.

⚠ ALWAYS DISCONNECT THE AIRLINE FROM THE TOOL/MACHINE INLET BEFORE ATTEMPTING TO ADJUST, FIT OR REMOVE A NOSE ASSEMBLY.

⚠ DO NOT OPERATE A TOOL/MACHINE THAT IS DIRECTED TOWARDS ANY PERSON(S).

⚠ ENSURE THAT VENT HOLES DO NOT BECOME BLOCKED OR COVERED AND THAT HOSES ARE ALWAYS IN GOOD CONDITION.

In addition to the general safety rules opposite, the following specific safety points must also be observed:

- ⚠ THE OPERATING PRESSURE SHALL NOT EXCEED 8 BAR - 120 LBF/IN².
- ⚠ DO NOT OPERATE THE TOOL WITHOUT FULL NOSE EQUIPMENT IN PLACE.
- ⚠ WHEN USING THE TOOL, THE WEARING OF SAFETY GLASSES IS REQUIRED BOTH BY THE OPERATOR AND OTHERS IN THE VICINITY TO PROTECT AGAINST FASTENER PROJECTION, SHOULD A FASTENER BE PLACED 'IN AIR'. WE RECOMMEND WEARING GLOVES IF THERE ARE SHARP EDGES OR CORNERS ON THE APPLICATION.
- ⚠ TAKE CARE TO AVOID ENTANGLEMENT OF LOOSE CLOTHES, TIES, LONG HAIR, CLEANING RAGS ETC. IN THE MOVING PARTS OF THE TOOL WHICH SHOULD BE KEPT DRY AND CLEAN FOR BEST POSSIBLE GRIP.
- ⚠ WHEN CARRYING THE TOOL FROM PLACE TO PLACE KEEP HANDS AWAY FROM THE TRIGGER/LEVER TO AVOID INADVERTENT START UP.
- ⚠ ALWAYS ADOPT A FIRM FOOTING OR A STABLE POSITION BEFORE OPERATING THE TOOL AND BE AWARE OF A TORQUE REACTION ON THE HANDS WHEN THE TOOL IS OPERATING, PARTICULARLY DURING THE REVERSING SEQUENCE. GRIP THE TOOL FIRMLY TO BE ABLE TO COUNTER THE TORQUE REACTION, BUT NOT TOO TIGHTLY.
- ⚠ KEEP HANDS AWAY FROM THE ROTATING DRIVE SCREW AND THE NOSE END OF THE TOOL. IF A FASTENER BECOMES JAMMED ON THE DRIVE SCREW, SHUT OFF THE AIR SUPPLY AND DRAIN THE SUPPLY LINE TO THE TOOL BEFORE ATTEMPTING TO DISLodge IT.
- ⚠ THE TOOL IS NOT ELECTRICALLY INSULATED.
- ⚠ THIS TOOL IS NOT DESIGNED FOR USE IN COMBUSTIBLE OR EXPLOSIVE ATMOSPHERES.

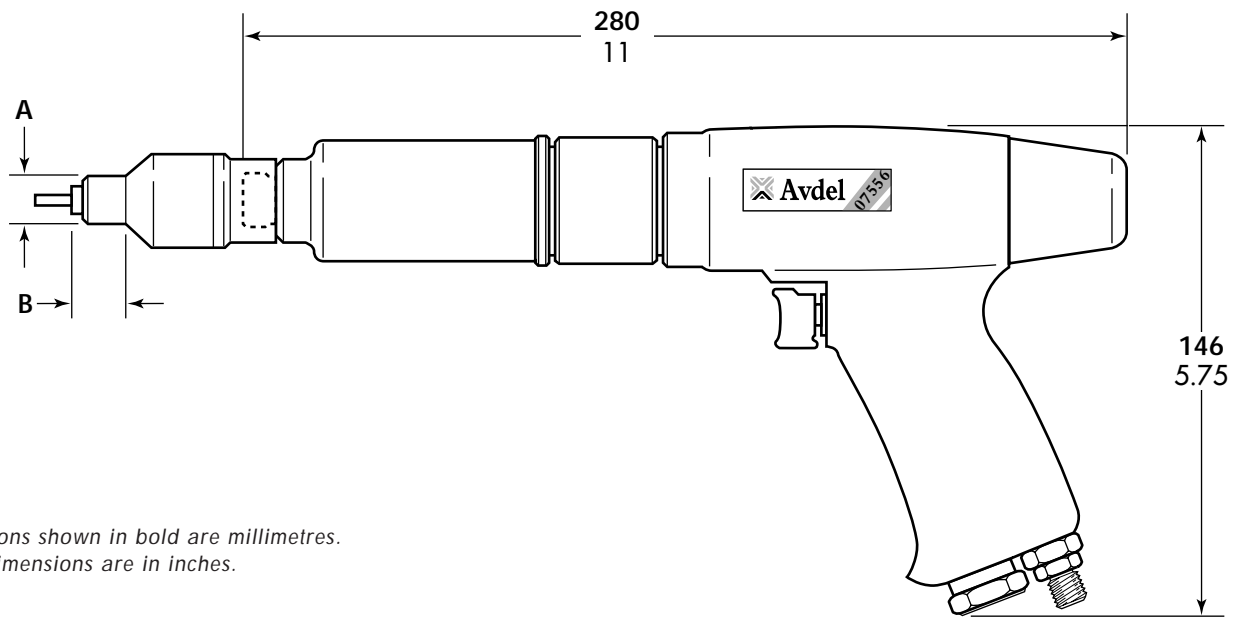
CONTENT OF USE

The pneumatic 07556 type tool is designed to place Avdel threaded inserts at high speed making it ideal for batch or flow-line assembly in a wide variety of applications throughout all industries.

Use the selection tables below and opposite to select a complete tool which will be fitted with the correct nose assembly for the threaded insert selected. 'A' and 'B' dimensions will help you assess the accessibility of your application.

It is also possible to order the base tool only (part number 07556-00400). For details of Nose Assemblies see pages 8 and 9.

7556 TOOL SELECTION									
INSERT NAME & SERIES	Ø	TORQUE SETTING (lbf ins)	UNSET CLUTCH PART N°	NOSE (see drawing opposite for A & B)				NOSE ASSY PART N°	COMPLETE TOOL PART N°
				A (mm)	B (mm)	A (in)	B (in)		
THIN SHEET NUTSERT (9650)	3/16 BSW	30 - 35	08556-00308	13	10	1/2	13/32	07556-09916	07556-01016
	1/4 BSW	35 - 40	08556-00309	13	13 1/2	1/2	17/32	07566-09918	07556-01018
	5/16 BSW	50 - 55	08556-00312	14	14	9/16	9/16	07443-09910	07556-01010
	1/4 BSF	35 - 40	08556-00309	13	13 1/2	1/2	17/32	07556-09928	07556-01028
	5/16 BSF	50 - 55	08556-00312	14	14	9/16	9/16	07443-09920	07556-01020
	4 UNC	7 - 9	08556-00302	13	11	1/2	7/16	07556-09954	07556-01054
	6 UNC	16 - 18	08556-00305	13	11	1/2	7/16	07556-09956	07556-01056
	8 UNC	16 - 18	08556-00305	13	12	1/2	15/32	07556-09958	07556-01058
	10 UNC	30 - 35	08556-00308	13	10	1/2	13/32	07556-09950	07556-01050
	4 UNF	7 - 9	08556-00302	13	11	1/2	7/16	07556-09974	07556-01074
	6 UNF	16 - 18	08556-00305	13	11	1/2	7/16	07556-09976	07556-01076
	8 UNF	16 - 18	08556-00305	13	12	1/2	15/32	07556-09978	07556-01078
	10 UNF	30 - 35	08556-00308	13	10	1/2	13/32	07556-09970	07556-01070
	1/4 UNC	35 - 40	08556-00309	13	13 1/2	1/2	17/32	07556-09948	07556-01048
	5/16 UNC	50 - 55	08556-00312	14	14	9/16	9/16	07443-09940	07556-01040
	1/4 UNF	35 - 40	08556-00309	13	13 1/2	1/2	17/32	07556-09968	07556-01068
	5/16 UNF	50 - 55	08556-00312	14	14	9/16	9/16	07443-09960	07556-01060
	6 BA	7 - 9	08556-00302	13	13 1/2	1/2	17/32	07556-09936	07556-01036
	4 BA	16 - 18	08556-00305	13	11	1/2	7/16	07556-09934	07556-01034
	2 BA	30 - 35	08556-00308	13	17	1/2	21/32	07556-09932	07556-01032
	0 BA	35 - 40	08556-00309	13	11	1/2	7/16	07556-09930	07556-01030
	M3	7 - 9	08556-00302	13	11	1/2	7/16	07556-09983	07556-01083
	M4	16 - 18	08556-00305	13	11	1/2	7/16	07556-09984	07556-01084
	M5	30 - 35	08556-00308	13	10	1/2	13/32	07556-09985	07556-01085
M6	35 - 40	08556-00309	13	13 1/2	1/2	17/32	07556-09986	07556-01086	
M8	50 - 55	08556-00312	14	14	9/16	9/16	07443-09988	07556-01088	
SUPERSERT (FB00)	8 UNC	16 - 18	08556-00305	13	10	1/2	13/32	07552-09558	07556-02058
	10 UNC	30 - 35	08556-00308	13	12	1/2	15/32	07552-09550	07556-02050
	8 UNF	16 - 18	08556-00305	13	10	1/2	13/32	07552-09578	07556-02078
	10 UNF	30 - 35	08556-00308	13	12	1/2	15/32	07552-09570	07556-02070
	1/4 UNC	45 - 50	08556-00311	13	15	1/2	19/32	07552-09548	07556-02048
	1/4 UNF	45 - 50	08556-00311	13	15	1/2	19/32	07552-09568	07556-02068
	M3	16 - 18	08556-00305	13	19	1/2	3/4	07552-09583	07556-02083
	M4	16 - 18	08556-00305	13	10	1/2	13/32	07552-09584	07556-02084
	M5	30 - 35	08556-00308	13	11	1/2	7/16	07552-09585	07556-02085
M6	45 - 50	08556-00311	13	15	1/2	19/32	07552-09586	07556-02086	
LARGE FLANGE HEXSERT (9498)	M4	16 - 18	08556-00305	13	10	1/2	13/32	07556-09184	07556-04084
	M5	30 - 35	08556-00308	13	10	1/2	13/32	07557-09285	07556-03085
	M6	35 - 40	08556-00309	14	12	9/16	15/32	07556-09186	07556-04086



Dimensions shown in bold are millimetres.
Other dimensions are in inches.

7556 TOOL SELECTION (continued)									
INSERT NAME & SERIES	Ø	TORQUE SETTING (lbf ins)	UNSET CLUTCH PART N°	NOSE (see drawing above for A & B)				COMPLETE TOOL PART N°	
				A (mm)	B (mm)	A (in)	B (in)		NOSE ASSY PART N°
STANDARD NUTSERTS (9500) (9538)	3/16 BSW	20 - 25	08556-00306	13	12	1/2	15/32	07556-09816	07556-00016
	1/4 BSW	25 - 30	08556-00307	13	15	1/2	19/32	07556-09818	07556-00018
	5/16 BSW	40 - 45	08556-00310	14	14	9/16	9/16	07443-09810	07556-00010
	3/8 BSW	50 - 55	08556-00312	16	10	5/8	13/32	07443-09812	07556-00012
	1/4 BSF	25 - 30	08556-00307	13	15	1/2	19/32	07556-09828	07556-00028
	5/16 BSF	40 - 45	08556-00310	14	14	9/16	9/16	07443-09820	07556-00020
	3/8 BSF	50 - 55	08556-00312	16	10	5/8	13/32	07443-09822	07556-00022
	4 UNC	5 - 7	08556-00301	13	12	1/2	15/32	07556-09854	07556-00054
	6 UNC	9 - 11	08556-00303	13	12	1/2	15/32	07556-09856	07556-00056
	8 UNC	13 - 15	08556-00304	13	10	1/2	13/32	07556-09858	07556-00058
	10 UNC	20 - 25	08556-00306	13	12	1/2	15/32	07556-09850	07556-00050
	6 UNF	9 - 11	08556-00303	13	12	1/2	15/32	07556-09876	07556-00076
	8 UNF	13 - 15	08556-00304	13	10	1/2	13/32	07556-09878	07556-00078
	10 UNF	20 - 25	08556-00306	13	12	1/2	15/32	07556-09870	07556-00070
	1/4 UNC	25 - 30	08556-00307	13	15	1/2	19/32	07556-09848	07556-00048
	5/16 UNC	40 - 45	08556-00310	14	14	9/16	9/16	07443-09840	07556-00040
	3/8 UNC	50 - 55	08556-00312	16	10	5/8	13/32	07443-09842	07556-00042
	1/4 UNF	25 - 30	08556-00307	13	15	1/2	19/32	07556-09868	07556-00068
	5/16 UNF	40 - 45	08556-00310	14	14	9/16	9/16	07443-09860	07556-00060
	3/8 UNF	50 - 55	08556-00312	16	10	5/8	13/32	07443-09862	07556-00062
	6 BA	5 - 7	08556-00301	13	15	1/2	19/32	07556-09836	07556-00036
	4 BA	9 - 11	08556-00303	13	12	1/2	15/32	07556-09834	07556-00034
	2 BA	20 - 25	08556-00306	13	12	1/2	15/32	07556-09832	07556-00032
0 BA	25 - 30	08556-00307	13	12	1/2	15/32	07556-09830	07556-00030	
M3	5 - 7	08556-00301	13	12	1/2	15/32	07556-09883	07556-00083	
M4	13 - 15	08556-00304	13	10	1/2	13/32	07556-09884	07556-00084	
M5	20 - 25	08556-00306	13	12	1/2	15/32	07556-09885	07556-00085	
M6	25 - 30	08556-00307	13	15	1/2	19/32	07556-09886	07556-00086	
M8	40 - 45	08556-00310	14	14	9/16	9/16	07443-09888	07556-00088	
M10	50 - 55	08556-00312	16	12	5/8	15/32	07443-09880	07556-00080	
LGE FLANGE THIN SHEET NUTSERT(9698)	M4	16 - 18	08556-00305	13	10	1/2	13/32	07556-09184	07556-04084
	M5	30 - 35	08556-00308	13	12	1/2	15/32	07556-09185	07556-04085
	M6	35 - 40	08556-00309	13	15	1/2	19/32	07556-09186	07556-04086
HEXSERT (9498)	M4	16 - 18	08556-00305	13	12	1/2	15/32	07556-09284	07556-06084
	M5	30 - 35	08556-00308	13	12	1/2	15/32	07556-09285	07556-06085
	M6	40 - 45	08556-00310	16	14	5/8	9/16	07556-09286	07556-06086
	M8	50 - 55	08556-00312	16	15	5/8	19/32	07443-09288	07556-06088
NUTSERT SQ (GK08)	M5	30 - 35	08556-00308	10	13	13/32	1/2	07528-07085	07556-07085
	M6	40 - 45	08556-00310	13	15	1/2	19/32	07556-09186	07556-04086

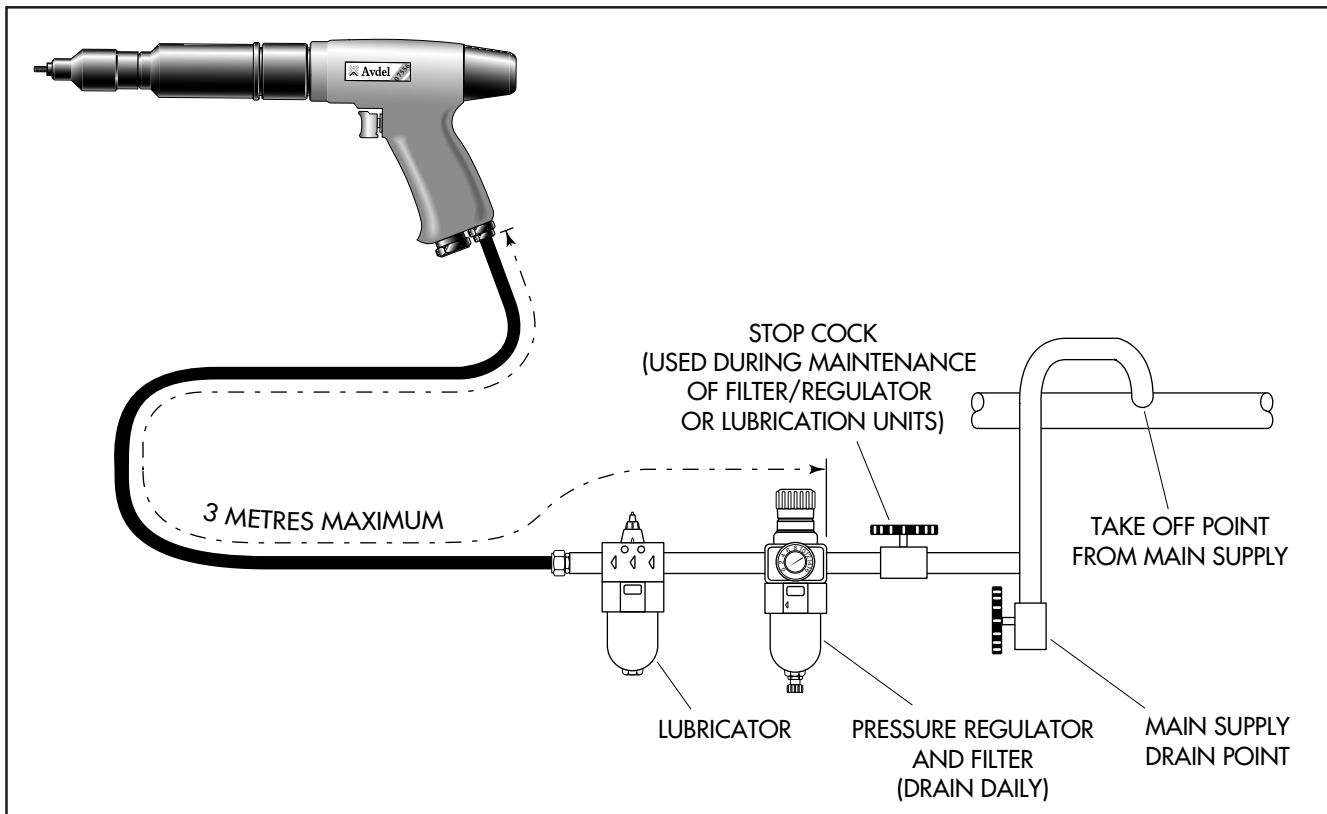
PUTTING INTO SERVICE

AIR SUPPLY

All tools are operated with compressed air at an optimum pressure of 5.5 bar. We recommend the use of pressure regulators and automatic oiling/filtering systems on the main air supply. These should be fitted within 3 metres of the tool (see diagram below) to ensure maximum tool life and minimum tool maintenance.

Air supply hoses should have a minimum working effective pressure rating of 150% of the maximum pressure produced in the system or 10 bar, whichever is the highest. Air hoses should be oil resistant, have an abrasion resistant exterior and should be armoured where operating conditions may result in hoses being damaged. All air hoses MUST have a minimum bore diameter of 6.4 millimetres or $\frac{1}{4}$ inch.

Read servicing daily details page 10.



OPERATING PROCEDURE

IMPORTANT

When placing Standard Nutserts, lubricate the drive screw of the tool every 25 placings. This is best achieved by wiping the drive screw with a sponge soaked with STP Lubricant part number 07992-00013

OPTION 1

- Ensure that the correct nose equipment is fitted.
- Connect the tool to the air supply.
- Place the insert into the prepared hole of the application.
- Locate the drivescrew of the tool into the insert.
- Operate the trigger. The drivescrew will screw into and collapse the insert, then automatically reverse out.

OPTION 2

- Ensure that the correct nose equipment is fitted.
- Connect the tool to the air supply.
- Screw the insert lip first onto the drive screw of the tool.
- With the insert on the tool, locate it into the prepared hole of the application.
- Operate the trigger. The drivescrew will screw into and collapse the insert, then automatically reverse out.

CLUTCH ADJUSTMENT

If you have ordered a complete tool the clutch will be set for the specified insert.

When purchased as a spare part the clutch is supplied unset.

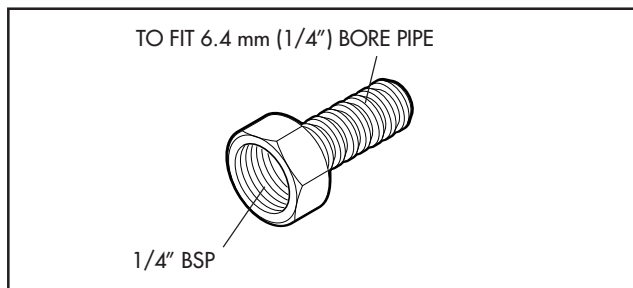
Correct clutch setting is necessary to ensure optimum deformation of the insert. If the deformation is insufficient (clutch torque too low) the insert will rotate in the application. If the deformation is excessive (clutch torque too high) thread distortion will occur and extensive wear on the drivescrew, may lead to fracture.

For details on how to adjust the clutch refer to the maintenance instructions referring to the clutch on page 11.

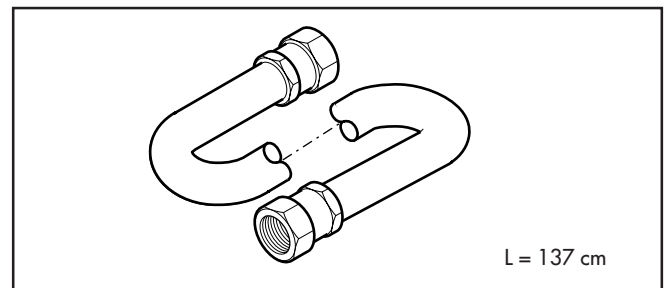
ACCESSORIES

Two different accessories are available to make the connection to your air supply:

Hose Connector
part n° 07005-00276



Hose Assembly
part n° 07008-000324



NOSE ASSEMBLIES

Nose assemblies are specifically designed for each size and type of insert used with the 07556 type of tooling. If you have purchased a complete tool, it will already be fitted with the correct nose assembly for your insert.

It is essential that the correct nose assembly is fitted prior to operating the tool. By knowing your original complete tool part number or the details of the insert to be placed, you will be able to order a new complete nose assembly using the selection tables pages 4 and 5.

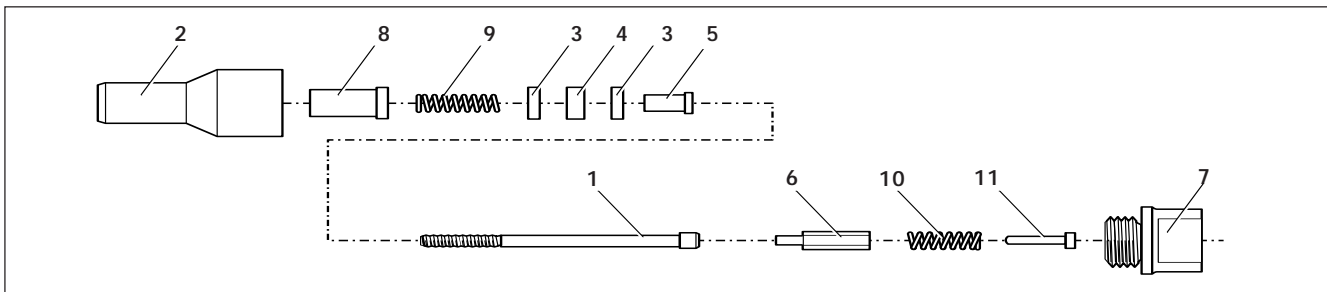
FITTING INSTRUCTIONS

IMPORTANT

The air supply must be disconnected when fitting or removing nose assemblies unless specifically instructed otherwise.

Before fitting the nose equipment, ensure the clutch on the tool is set to the correct torque for the insert being placed. (Torque values are on page 11.)

- Where applicable, insert sleeve 8 and thrust spring 9 into nose housing 2.
- Coat thrust washers 3 and thrust bearing 4 with high pressure grease (eg. Shell Alvania E.P.I.) and locate them in the order shown below into the nose housing 2.
- Where applicable, fit spacer 5 through thrust washers and thrust bearings.
- Insert drive screw 1 through the above assembly.
- Fit drive shaft 6 into the hexagon hole in the drive screw head.
- Insert stop 11 and spring 10 into the front of the base tool.
- Screw adaptor 7 into clutch housing of the base tool (left hand thread).
- Offer up the nose assembly to the adaptor. It will be necessary to rotate the drive screw by hand to line up the hexagon on the drive shaft 6 with the hexagonal hole in the front jaw of the base tool.
- Screw the nose housing 2 onto the adaptor 7 and tighten with a spanner (left hand thread).



SERVICING INSTRUCTIONS

Nose assemblies should be serviced at weekly intervals.

- Remove the complete nose assembly using the reverse procedure to the 'Fitting Instructions'.
- Any worn or damaged part should be replaced.
- Particularly check wear on drivescrew, thrust washers and thrust bearing.
- Lubricate thrust washers and thrust bearings with high pressure grease (eg Shell Alvania E.P.I.)
- Check springs are not distorted.
- Assemble according to fitting instructions.

NOSE ASSEMBLY COMPONENTS

The table opposite lists all nose assemblies available. Each nose assembly represents a unique assembly of components which can be ordered individually. Components numbers refer to the text and illustration above. We recommend some stock as items will need regular replacement. Read the nose assemblies servicing instructions above carefully. All nose assemblies also include spring 10 part number 07430-08282 and stop 11 part number 07430-08203.

NOSE ASSY	1	2	3	4	5	6	7	8	9
07443-09288	07001-00084	07522-08988	07007-00081	07007-00078	07443-03110	07430-01808	07443-08002	07522-08902	07154-03092
07443-09810	07001-00076	07443-06110	07007-00081	07007-00078	07443-03110	07430-01110	07443-08002	-	-
07443-09812	07001-00099	07443-06112	07007-00081	07007-00078	-	07430-01112	07443-08002	-	-
07443-09820	07001-00077	07443-06110	07007-00081	07007-00078	07443-03110	07430-01110	07443-08002	-	-
07443-09822	07001-00098	07443-06112	07007-00081	07007-00078	-	07430-01112	07443-08002	-	-
07443-09840	07001-00078	07443-06110	07007-00081	07007-00078	07443-03110	07430-01110	07443-08002	-	-
07443-09842	07001-00106	07443-06112	07007-00081	07007-00078	-	07430-01112	07443-08002	-	-
07443-09860	07001-00079	07443-06110	07007-00081	07007-00078	07443-03110	07430-01110	07443-08002	-	-
07443-09862	07001-00105	07443-06112	07007-00081	07007-00078	-	07430-01112	07443-08002	-	-
07443-09880	07001-00100	07443-06810	07007-00082	07007-00079	-	07430-01810	07443-08003	-	-
07443-09888	07001-00084	07443-06110	07007-00081	07007-00078	07443-03110	07430-01808	07443-08002	-	-
07443-09910	07001-00076	07443-08805	07007-00081	07007-00078	07443-03110	07430-01110	07443-08002	-	-
07443-09920	07001-00077	07443-08805	07007-00081	07007-00078	07443-03110	07430-01110	07443-08002	-	-
07443-09940	07001-00078	07443-08805	07007-00081	07007-00078	07443-03110	07430-01110	07443-08002	-	-
07443-09960	07001-00079	07443-08805	07007-00081	07007-00078	07443-03110	07430-01110	07443-08002	-	-
07443-09988	07001-00084	07443-08805	07007-00081	07007-00078	07443-03110	07430-01808	07443-08002	-	-
07528-07085	07001-00256	07557-08985	07007-00080	07007-00077	07521-08808	07521-08806	07443-08001	-	-
07552-09548	07001-00336	07552-07704	07007-00080	07007-00077	-	07522-08801	07443-08001	-	-
07552-09550	07001-00300	07552-07706	07007-00080	07007-00077	07521-08808	07521-08803	07443-08001	-	-
07552-09568	07001-00110	07552-07704	07007-00080	07007-00077	-	07522-08801	07443-08001	-	-
07552-09570	07001-00301	07552-07706	07007-00080	07007-00077	07521-08808	07521-08803	07443-08001	-	-
07552-09578	07001-00319	07552-07701	07007-00080	07007-00077	07521-08809	07521-08804	07443-08001	-	-
07552-09583	07001-00325	07552-07709	07007-00080	07007-00077	07520-08803	07520-08802	07443-08001	-	-
07552-09584	07001-00326	07552-07705	07007-00080	07007-00077	07521-08810	07521-08805	07443-08001	-	-
07552-09585	07001-00256	07552-07702	07007-00080	07007-00077	07521-08808	07521-08806	07443-08001	-	-
07552-09586	07001-00337	07552-07703	07007-00080	07007-00077	-	07522-08802	07443-08001	-	-
07552-09588	07001-00084	07552-07710	07007-00081	07007-00078	07443-03110	07430-01808	07443-08002	-	-
07556-09184	07001-00326	07552-06804	07007-00080	07007-00077	07521-08810	07521-08805	07443-08001	07552-08804	07440-08002
07556-09185	07001-00256	07552-06805	07007-00080	07007-00077	07521-08808	07521-08806	07443-08001	07552-08805	07440-08002
07556-09186	07001-00337	07552-06806	07007-00080	07007-00077	-	07522-08802	07443-08001	07552-08806	07150-00403
07556-09284	07001-00326	07521-08984	07007-00080	07007-00077	07521-08810	07521-08805	07443-08001	07521-08901	07440-08002
07556-09285	07001-00256	07521-08985	07007-00080	07007-00077	07521-08808	07521-08806	07443-08001	07521-08902	07440-08002
07556-09286	07001-00337	07522-08986	07007-00080	07007-00077	-	07522-08802	07443-08001	07522-08901	07150-00504
07556-09816	07001-00320	07440-06805	07007-00080	07007-00077	07521-08808	07521-08803	07443-08001	-	-
07556-09818	07001-00334	07443-06108	07007-00080	07007-00077	-	07522-08801	07443-08001	-	-
07556-09828	07001-00333	07443-06108	07007-00080	07007-00077	-	07522-08801	07443-08001	-	-
07556-09830	07001-00335	07443-06108	07007-00080	07007-00077	07521-08801	07522-08801	07443-08001	-	-
07556-09832	07001-00321	07440-06805	07007-00080	07007-00077	07521-08808	07521-08803	07443-08001	-	-
07556-09834	07001-00315	07440-06304	07007-00080	07007-00077	07521-08807	07521-08802	07443-08001	-	-
07556-09836	07001-00276	07440-06306	07007-00080	07007-00077	07520-08803	07520-08801	07443-08001	-	-
07556-09848	07001-00336	07443-06108	07007-00080	07007-00077	-	07522-08801	07443-08001	-	-
07556-09850	07001-00300	07440-06805	07007-00080	07007-00077	07521-08808	07521-08803	07443-08001	-	-
07556-09854	07001-00313	07440-06306	07007-00080	07007-00077	07520-08803	07520-08801	07443-08001	-	-
07556-09856	07001-00316	07440-06304	07007-00080	07007-00077	07521-08807	07521-08802	07443-08001	-	-
07556-09868	07001-00318	07440-06508	07007-00080	07007-00077	07521-08809	07521-08804	07443-08001	-	-
07556-09870	07001-00301	07440-06805	07007-00080	07007-00077	07521-08808	07521-08803	07443-08001	-	-
07556-09876	07001-00317	07440-06304	07007-00080	07007-00077	07521-08807	07521-08802	07443-08001	-	-
07556-09878	07001-00319	07440-06508	07007-00080	07007-00077	07521-08809	07521-08804	07443-08001	-	-
07556-09883	07001-00325	07440-06308	07007-00080	07007-00077	07520-08803	07520-08802	07443-08001	-	-
07556-09884	07001-00326	07440-06508	07007-00080	07007-00077	07521-08810	07521-08805	07443-08001	-	-
07556-09885	07001-00256	07440-06805	07007-00080	07007-00077	07521-08808	07521-08806	07443-08001	-	-
07556-09886	07001-00337	07440-06108	07007-00080	07007-00077	-	07522-08802	07443-08001	-	-
07556-09916	07001-00320	07440-08805	07007-00080	07007-00077	07521-08808	07521-08803	07443-08001	-	-
07556-09918									