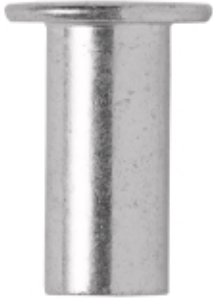
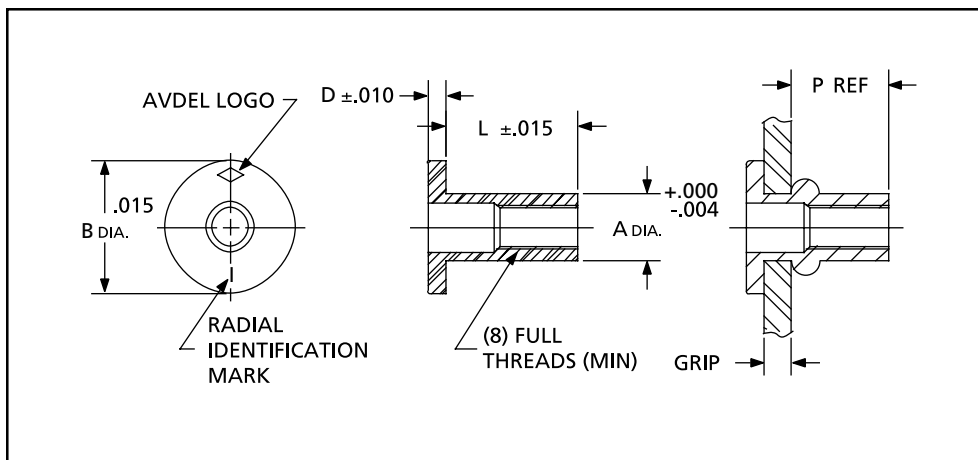


Large flange head style provides increased push-out performance.

Benefits:



- **Reduced Assembly Costs**
Blind installation is installed fast and cleanly.
- **Designed for Thin Materials**
Can work in materials as thin as .020" and greater.
- **Permanent**
Crimps the parent material, providing secure and permanent load-bearing threads.
- **Large Flange Head**
Increased push-out performance.



Material	Alloy	Finish
Steel	1006/1010 Low Carbon Steel	Zinc Plate, Type 1, Class 3 with Supplementary Clear Chromate

Series 09434											
Thread Size	Part Number	Grip	L	B	D	A	P	Ident Mark	Drill Size (Ref)	Hole Size	
										Min.	Max.
1/4-20 UNC	09434-00820	.020-.080 (0,51-2,03)	.625 (15,88)	.475 (12,07)	.058 (1,47)	.332 (8,43)	.450 (11,43)	BLANK	#Q	.332 (8,43)	.338 (8,59)
	09434-00822	.080-.140 (2,03-3,56)	.687 (17,45)				.450 (11,43)	1 RAD			
	09434-00824	.140-.200 (3,56-5,08)	.750 (19,05)				.450 (11,43)	2 RAD			
	09434-00826	.200-.260 (5,08-6,60)	.812 (20,62)				.445 (11,30)	3 RAD			
5/16-18 UNC	09434-01024	.030-.125 (0,76-3,18)	.750 (19,05)	.665 (16,89)	.062 (1,57)	.413 (10,49)	.505 (12,83)	BLANK	#Z	.413 (10,49)	.423 (10,74)
	09434-01028	.125-.200 (3,18-5,08)	.875 (22,23)				.555 (14,10)	1 RAD			
	09434-01030	.200-.275 (5,08-6,99)	.937 (23,80)				.540 (13,72)	2 RAD			
3/8-16 UNC	09434-01227	.030-.115 (0,76-2,92)	.844 (21,44)	.781 (19,84)	.088 (2,24)	.490 (12,45)	.585 (14,86)	BLANK	12,5mm	.490 (12,45)	.500 (12,70)
	09434-01230	.115-.200 (2,92-5,08)	.938 (23,83)				.595 (15,11)	1 RAD			
	09434-01233	.200-.285 (5,08-7,24)	1.031 (26,19)				.605 (15,37)	2 RAD			

Series 09435											
Thread Size	Part Number	Grip	L	B	D	A	P	Ident Mark	Drill Size (Ref)	Hole Size	
										Min.	Max.
6-32 UNC	09435-00614	.010-.075 (0,25-1,91)	.438 (11,13)	.325 (8,26)	.032 (0,81)	.189 (4,80)	.300 (7,62)	1 RAD	#12	.189 (4,80)	.193 (4,90)
	09435-00616	.075-.120 (1,91-3,05)	.500 (12,70)				.315 (8,00)	3 RAD			
	09435-00617	.120-.160 (3,05-4,06)	.500 (12,70)				.270 (6,86)	5 RAD			
8-32 UNC	09435-00814	.010-.075 (0,25-1,91)	.438 (11,13)	.357 (9,07)	.032 (0,81)	.221 (5,61)	.300 (7,62)	1 RAD	#2	.221 (5,61)	.226 (5,74)
	09435-00816	.075-.120 (1,91-3,05)	.500 (12,70)				.315 (8,00)	3 RAD			
	09435-00817	.120-.160 (3,05-4,06)	.500 (12,70)				.270 (6,86)	5 RAD			
10-24 UNC	09435-01017	.010-.080 (0,25-2,03)	.531 (13,49)	.406 (10,31)	.038 (0,97)	.250 (6,35)	.380 (9,65)	1 RAD	#E	.250 (6,35)	.256 (6,50)
	09435-01019	.080-.130 (2,03-3,30)	.594 (15,09)				.390 (9,91)	3 RAD			
	09435-01021	.130-.180 (3,30-4,57)	.641 (16,28)				.390 (9,91)	5 RAD			

Series 09437										
Thread Type	Part Number	Grip	L	B	D	A	P	Drill Size (Ref.)	Hole Size	
									Min.	Max.
10-32 UNF	09437-01017	.010-.080 (0,25-2,03)	.531 (13,49)	.406 (10,31)	.038 (0,97)	.250 (6,35)	.380 (9,65)	#E	.250 (6,35)	.256 (6,50)
	09437-01019	.080-.130 (2,03-3,30)	.594 (15,09)				.390 (9,91)			
	09437-01021	.130-.180 (3,30-4,57)	.641 (16,28)				.390 (9,91)			

Note:

All dimension shown in parenthesis (e.g., (12,67)) are millimeters, unless otherwise indicated.

Material	Finish
Aluminum	Plain

Series 09444											
Size	Part Number	Grip	L	B	D	A	P	Ident Mark	Drill Size (Ref.)	Hole Size	
										Min.	Max.
1/4 UNC	09444-00820	.020-.080	.625	.475	.058	.332	.450	Blank	#Q	.332 (8,43)	.338 (8,59)
	09444-00822	.080-.140	.687					1 Rad			
	09444-00824	.140-.200	.750					2 Rad			
	09444-00826	.200-.260	.812					3 Rad			
5/16 UNC	09444-01024	.030-.125	.750	.665	.062	.413	.505	Blank	#Z	.413 (10,49)	.423 (10,74)
	09444-01028	.125-.200	.875				.555	1 Rad			
3/8 UNC	09444-01227	.030-.115	.844	.781	.088	.490	.585	Blank	12,5mm	.490 (12,45)	.500 (12,70)
	09444-01230	.115-.200	.938				.595	1 Rad			
	09444-01233	.200-.285	1.031				.605	2 Rad			

Series 09445											
Thread Type	Part Number	Grip	L	B	D	A	P	Indent Mark	Drill Size (Ref.)	Hole Size	
										Min.	Max.
6-32 UNC	09445-00614	.010-.075 (0,25-1,91)	.438 (11,13)	.325 (8,26)	.032 (0,81)	.189 (4,80)	.300 (7,62)	1 RAD	#12	.189 (4,80)	.193 (4,90)
8-32 UNC	09445-00814	.010-.075 (0,25-1,91)	.438 (11,13)	.357 (9,07)	.032 (0,81)	.221 (5,61)	.300 (7,62)	1 RAD	#2	.221 (5,61)	.226 (5,74)
	09445-00816	.075-.120 (1,91-3,05)	.500 (12,70)				.315 (8,00)	3 RAD			
	09445-00817	.120-.160 (3,05-4,06)	.500 (12,70)				.270 (6,86)	5 RAD			
10-24 UNC	09445-01017	.010-.080 (0,25-2,03)	.531 (13,49)	.406 (10,31)	.038 (0,97)	.250 (6,35)	.380 (9,65)	1 RAD	#E	.250 (6,35)	.256 (6,50)
	09445-01019	.080-.130 (2,03-3,30)	.594 (15,09)				.390 (9,91)	3 RAD			

Series 09447											
Thread Type	Part Number	Grip	L	B	D	A	P	Drill Size (Ref.)	Hole Size		
									Min.	Max.	
10-32 UNF	09447-01017	.010-.080 (0,25-2,03)	.531 (13,49)	.406 (10,31)	.038 (0,97)	.250 (6,35)	.380 (9,65)	#E	.250 (6,35)	.256 (6,50)	
	09447-01019	.080-.130 (2,03-3,30)	.594 (15,09)				.390 (9,91)				
	09447-01021	.130-.180 (3,30-4,57)	.641 (16,28)				.390 (9,91)				

Note:

All dimension shown in parenthesis (e.g., (12,67)) are millimeters, unless otherwise indicated.