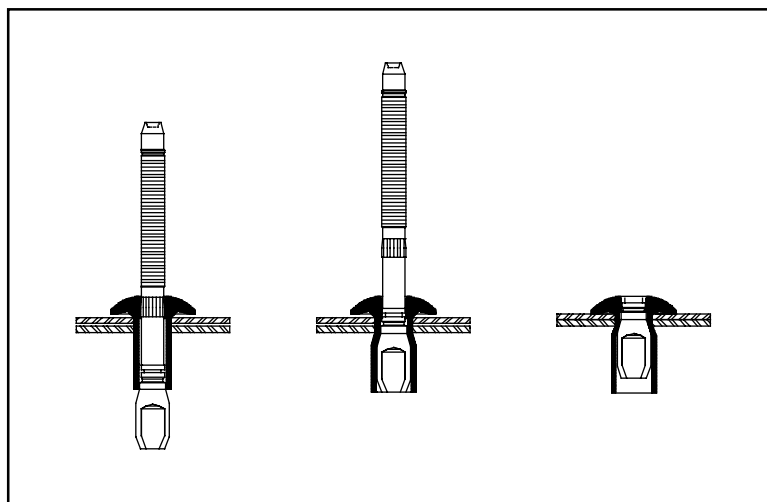


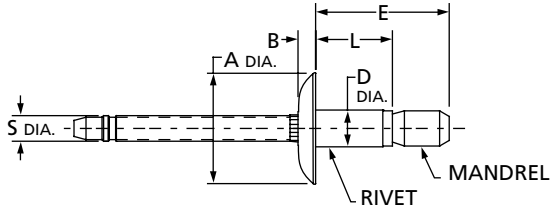
*Positive internal mechanical locking feature with superior vibration and water resistance.
Available in a variety of materials and headstyles.*



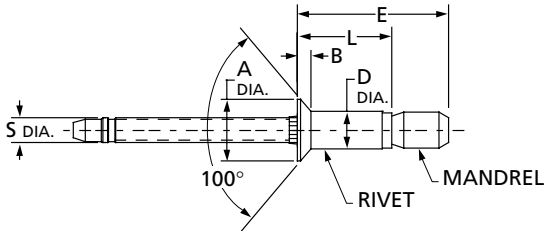
Benefits:

- **Internal Lock**
Positive stem retention with an internal, mechanical-locking feature.
- **Complete Hole Fill**
Provides greater joint integrity and added water resistance.
- **High Shear and Tensile**
Requires fewer rivets per assembly.

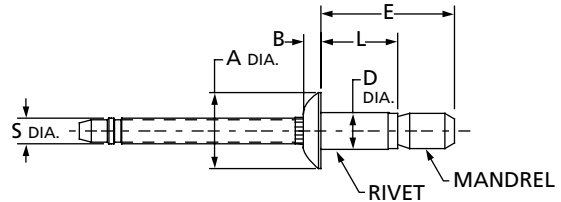




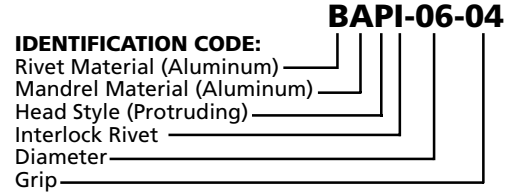
Large Flange Head



Countersunk Head



Protruding Head



SERIES	RIVET		MANDREL	
	MATERIAL	FINISH	MATERIAL	FINISH
SSPI	Steel	Zinc Plate Clear & Lube	Steel	Zinc Plate & Gold Chromate
BAPI	Aluminum 5056	None	Aluminum	None
BALI	Aluminum 5056	None	Aluminum	None
SSCI	Steel	Zinc Plate Clear & Lube	Steel	Zinc Plate & Gold Chromate

Diam. Grip	Grip Range		L Max.	E Max.
	Min.	Max.		
-06	-04	.062 (1,57) / .250 (6,35)	.416 (10,57)	.842 (21,39)
	-07	.214 (5,44) / .437 (11,10)	.577 (14,66)	1.003 (25,48)
	-10*	.375 (9,53) / .625 (15,88)	.731 (18,57)	1.09 (27,69)
-E06	-07*	.062 (1,57) / .437 (11,10)	.541 (13,74)	.967 (24,56)
-08	-6	.080 (2,03) / .375 (9,53)	.556 (14,12)	1.181 (30,00)
	-10	.350 (8,89) / .625 (15,88)	.806 (20,47)	1.431 (36,35)
-E08	-10*	.080 (2,03) / .625 (15,88)	.806 (20,47)	1.40 (35,56)
Countersunk				
-06	-06*	.125 (3,18) / .331 (8,41)	.496 (12,60)	.793 (20,14)
-08	-08*	.170 (4,32) / .475 (12,07)	.685 (17,40)	1.115 (28,32)

*These grips are not defined in IFI-134

NOTES:

- Aluminum conforms to IFI-134 (Grade 12).
Steel conforms to IFI-134 (Grade 30).
 - Testing specification: IFI-135
 - Inspection and quality assurance: IFI-137
- E = Extended Grip Version

Protruding Head							
Diam.	A	B Max.	D	S	Hole Size	Installed Fastener Min. Strength (Lbs. f [N])	
						Shear	Tensile
-06	.355-.400 inches	.090	.184-.193	.114-.120	.194-.204	Steel	
	9,02-10,16 mm.	2,29	4,67-4,90	2,90-3,05	4,93-5,18	1300 (5783)	1000 (4448)
-08	.480-.530 inches	.117	.254-.260	.153-.162	.261-.276	Steel	
	12,19-13,46 mm.	2,97	6,45-6,60	3,89-4,11	6,63-7,01	2400 (10676)	1850 (8229)
Countersunk							
B Ref.							
-06	.325-.360 inches	.070	.184-.193	.114-.120	.194-.204	Steel	
	8,26-9,14 mm.	1,78	4,67-4,90	2,90-3,05	4,93-5,18	1300 (5782)	1000 (4448)
-08	.395-.998 inches	.079	.254-.260	.153-.162	.261-.276	Steel	
	10,03-11,38 mm.	2,01	6,45-6,60	3,89-4,11	6,63-7,01	2400 (10675)	1850 (8229)
Large Flange							
-06	.500-.500 inches	.105	.184-.193	.114-.120	.194-.204	Aluminum	
	12,70-13,46 mm.	2,67	4,67-4,90	2,90-3,05	4,93-5,18	550 (2447)	450 (2002)
-08	.735-.75 inches	.117	.254-.260	.153-.162	.261-.276	Steel	
	18,67-19,43 mm.	2,97	6,45-6,60	3,89-4,11	6,63-7,01	1270 (5649)	830 (3692)