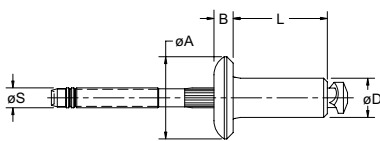


T Rivet Multi-Grip BSPTS / BSLTS / BSCTS

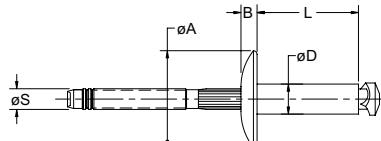


For installation information please refer to the tooling overview and manuals on our website www.avdel-global.com.
 Pour les conditions de pose, merci de vous référer à la description de l'outil et aux manuels disponibles sur notre site Web.
 Angaben zur Verarbeitung entnehmen Sie bitte der Geräteübersicht und den Betriebsanleitungen auf unserer Website.
 Per informazioni sull'installazione preghiamo consultare i manuali e la panoramica degli attrezzi sul nostro sito web.
 Para ver información sobre máquinas de colocación, consulte nuestra página web, apartados visión general de máquinas y manuales.

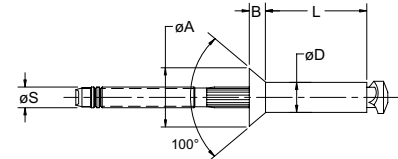
English	Français	Deutsch	Italiano	Español
Body: Aluminium* Natural	Corps: Aluminium* Brut	Hülse: Aluminium* Blank	Corpo: Alluminio* Nessuna finitura	Cuerpo: Aluminio* Natural
Stem: Steel Zinc plated	Tige: Acier Revêtement zingué	Dorn: Stahl Verzinkt	Gambo: Acciaio Zincati	Vástago: Acero Zincado
*5056				



T Rivet BSPTS
 Protruding head / Tête bombée /
 Flachrundkopf / Testa tonda /
 Cabeza alomada



T Rivet BSLTS
 Large flange / Tête large /
 Flachrundkopf, extragroß /
 Testa larga / Cabeza ancha



T Rivet BSCTS
 Countersunk / Tête fraisée /
 Senkkopf / Testa svasata /
 Cabeza avellanada

Ø	Ø		Ø D		L	Ø S	lb ^f 1)	lb ^f 1)	BSPTS Protruding			BSLTS Large flange			BSCTS Countersunk					
	min.	max.	min.	max.					max.	Part No. /ref	Part No. /ref	Part No. /ref	Part No. /ref	Part No. /ref	Part No. /ref	Part No. /ref				
3/16" (4.8 mm)	.046	.203	.192	.196	.187	.457	.116	1000	600	.390	.091	-06-03	.562	.091	-06-03	.371	.083	-06-06		
	.203	.390																	-06-06	
	.390	.578																		-06-09
	.578	.765																		

all dimensions in inches / en pouces / alle Maße in Zoll / in pollici / en pulgadas

1) typical values / valeurs moyennes / typische Werte / Valori tipici / resistencias máximas recomendadas



An Acument™ Global Technologies Company

www.avdel-global.com

© 2007 Acument Intellectual Properties, LLC

08c.2007

Data shown is subject to change without prior notice as a result of continuous product development and improvement policy.
 Your local Avdel representative is at your disposal should you need to confirm latest information.