

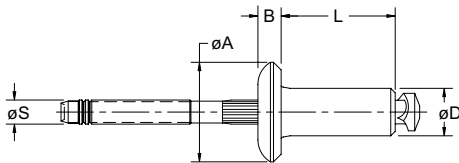
# T Rivet BSPTS / BSLTS



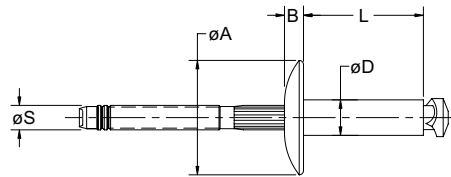
For installation information please refer to the tooling overview and manuals on our website [www.avdel-global.com](http://www.avdel-global.com).  
 Pour les conditions de pose, merci de vous référer à la description de l'outil et aux manuels disponibles sur notre site Web.  
 Angaben zur Verarbeitung entnehmen Sie bitte der Geräteübersicht und den Betriebsanleitungen auf unserer Website.  
 Per informazioni sull'installazione preghiamo consultare i manuali e la panoramica degli attrezzi sul nostro sito web.  
 Para ver información sobre máquinas de colocación, consulte nuestra página web, apartados visión general de máquinas y manuales.

English	Français	Deutsch	Italiano	Español
Body: Aluminium* Natural	Corps: Aluminium* Brut	Hülse: Aluminium* Blank	Corpo: Alluminio* Nessuna finitura	Cuerpo: Aluminio* Natural
Stem: Steel Zinc plated	Tige: Acier Revêtement zingué	Dorn: Stahl Verzinkt	Gambo: Acciaio Zincati	Vástago: Acero Zincado

\*5056



**T Rivet BSPTS**  
 Protruding head / Tête bombée /  
 Flachrundkopf / Testa tonda /  
 Cabeza alomada



**T Rivet BSLTS**  
 Large flange / Tête large /  
 Flachrundkopf, extragroß /  
 Testa larga / Cabeza ancha

Ø nom.	Ø		Thread		Ø D max.	L max.	Ø S	Tensile Strength lbf <sup>1)</sup>	Yield Strength lbf <sup>1)</sup>	BSPTS Protruding head			BSLTS Large flange		
	min.	max.	min.	max.						Ø A	B	Part No. /ref	Ø A	B	Part No. /ref
3/16" (4.8 mm)	.046	.078	.192	.196	.187	.395	.116	1000	600	.395	.091	-06-062	.562	.091	-06-062
	.078	.109				.395						-06-093			-06-093
	.109	.140				.395						-06-125			-06-125
	.140	.171				.395						-06-156			-06-156
	.171	.203				.457						-06-187			-06-187
	.203	.234				.457						-06-218			-06-218
	.234	.265				.529						-06-250			-06-250
	.265	.296				.529						-06-281			-06-281
	.296	.328				.582						-06-312			-06-312
	.328	.359				.582						-06-343			-06-343
	.359	.390				.645						-06-375			-06-375
	.390	.421				.645						-06-406			-06-406
	.421	.453				.707						-06-437			-06-437
	.453	.484				.707						-06-468			-06-468
.484	.515	.770	-06-500	-06-500											
1/4" (6.4 mm)	.093	.156	.257	.261	.250	.500	.151	1900	1100	.520	.110	-08-125	.750	.110	-08-125
	.156	.218				.562						-08-187			-08-187
	.218	.281				.625						-08-250			-08-250
	.281	.343				.687						-08-312			-08-312
	.343	.406				.750						-08-375			-08-375
	.406	.468				.812						-08-437			-08-437
	.468	.531				.875						-08-500			-08-500
	.531	.593				.937						-08-562			-08-562

all dimensions in inches / en pouces / alle Maße in Zoll / in pollici / en pulgadas

1) typical values / valeurs moyennes / typische Werte / Valori tipici / resistencias máximas recomendadas



An Acument™ Global Technologies Company

[www.avdel-global.com](http://www.avdel-global.com)

© 2007 Acument Intellectual Properties, LLC

08b.2007

Data shown is subject to change without prior notice as a result of continuous product development and improvement policy.  
 Your local Avdel representative is at your disposal should you need to confirm latest information.