

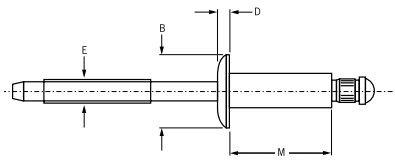
# Q Rivet BSPQ / BSLQ / BSCQ



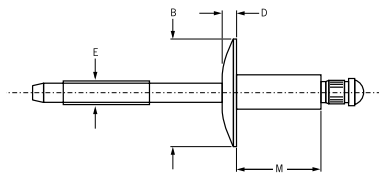
English	Français	Deutsch	Italiano	Español
Body: Aluminium alloy* (5 % Mg) Natural	Corps: Alliage d'aluminium* (5% Mg) Brut	Hülse: Aluminium* (5 % Mg) Blank	Corpo: Lega di alluminio* (5% Mg) Nessuna finitura	Cuerpo: Aluminio* (5% Mg) Natural
Stem: Steel** Zinc plated	Tige: Acier** Revêtement zingué	Dorn: Stahl** verzinkt	Gambo: Acciaio** Zincati	Vástago: Acero** Zincado

\*: BS 1473 5056 DIN 1725 AlMg5 Werkstoff 3.3555

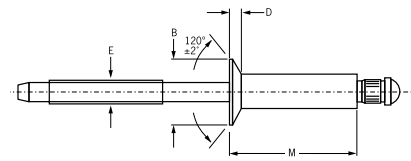
\*\* : BS3111 Type 1 SAE 1038 DIN 1654 Cq35



**Q Rivet BSPQ**  
Protruding head / Tête bombée /  
Flachrundkopf / Testa tonda /  
Cabeza alomada



**Q Rivet BSLQ**  
Large flange / Tête large /  
Flachrundkopf, extragroß /  
Testa larga / Cabeza ancha



**Q Rivet BSCQ**  
Countersunk / Tête fraisée  
Senkkopf / Testa svasata  
Cabeza avellanada

ø nom.						M max.	ø E ref.	BSPQ Protruding head			BSLQ Large flange		BSCQ Countersunk			
	min.	mid. <sup>1)</sup>	max.	min.	max.			ø B	D max.	Part No. /ref BSPQ-	ø B	D max.	Part No. /ref BSLQ-	ø B ±.007	D ref.	Part No. /ref BSCQ-
1/8" (3.2 mm)			.062	.129	.133	.212	.075	.250 ±.012	.042	.375 ±.015	.065	.226	.032			
	.063	.093	.125			.275										
	.094	.140	.187			.337										
	.126	.187	.250			.400										
	.188	.250	.312			.462										
	.251	.312	.375			.535										
	.313	.375	.437			.602										
	.376	.437	.500			.670										
	5/32" (4.0 mm)	.062	.093			.125								.160	.164	.300
.094		.140	.187	.362												
.126		.187	.250	.425												
.251		.312	.375	.550												
.376		.437	.500	.695												
3/16" (4.8 mm)	.062	.093	.125	.192	.196	.325	.114	.375 ±.019	.060	.625 ±.025	.092	.344	.050			
	.094	.140	.187			.387										
	.126	.187	.250			.450										
	.188	.250	.312			.512										
	.251	.312	.375			.575										
	.376	.437	.500			.700										
	.501	.562	.625			.850										
	.626	.687	.750			.980										
	.751	.812	.875			1.110										

all dimensions in inches / en pouces / alle Maße in Zoll / in pollici / en pulgadas

1) Mandrels break flush with rivet head at mid. grip (except -04-01s, which break at .062) / La tige rompt affleurante à la tête du rivet en milieu de plage de serrage (sauf pour -04-01s qui rompt à .062) / Bei mittlerem Klemmbereich (mid.) reißt der Dorn bündig mit dem Nietkopf ab (außer -04-01, der bei .062 abreißt) / Q Rivet rottura del chiodo a livello della testa del rivetto per grip medio (eccetto -04-01s rottura a .062) / El punto de rotura del Q Rivet es a ras con la cabeza del remache en su grip intermedio (excepto el -04-01s. que rompe a .062)



An Acument™ Global Technologies Company



www.avdel-global.com

© 2007 Acument Intellectual Properties, LLC

10.2007, page 1/2

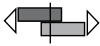

Data shown is subject to change without prior notice as a result of continuous product development and improvement policy.  
Your local Avdel representative is at your disposal should you need to confirm latest information.

# Q Rivet BSPQ / BSLQ / BSCQ

Ø nom.						M max.	Ø E ref.	BSPQ Protruding head			BSLQ Large flange			BSCQ Countersunk									
	min.	mid. <sup>1)</sup>	max.	min.	max.			Ø B	D max.	Part No. /ref BSPQ-	Ø B	D max.	Part No. /ref BSLQ-	Ø B ±.007	D ref.	Part No. /ref BSCQ-							
1/4" (6.4 mm)	.062	.093	.125	.257	.261	.375	.151	.500 ±.025	.078	.750 ±.025	.107	.468	.071	-08-02	-08-04	-08-06	-08-08	-08-10	-08-12	-08-14	-08-16	-08-18	-08-20
	.126	.187	.250			.500								.625	.750	.900	1.030	1.160	1.290	1.420	1.550		
	.251	.312	.375			.625								.750	.900	1.030	1.160	1.290	1.420	1.550			
	.376	.437	.500			.750								.900	1.030	1.160	1.290	1.420	1.550				
	.501	.562	.625			.900								1.030	1.160	1.290	1.420	1.550					
	.626	.687	.750			1.030								1.160	1.290	1.420	1.550						
	.751	.812	.875			1.160								1.290	1.420	1.550							
	.876	.937	1.000			1.290								1.420	1.550								
	1.001	1.062	1.125			1.420								1.550									
	1.126	1.187	1.250			1.550																	

all dimensions in inches / en pouces / alle Maße in Zoll / in pollici / en pulgadas

1) Mandrels break flush with rivet head at mid. grip (except -04-01s, which break at .062) / La tige rompt affleurante à la tête du rivet en milieu de plage de serrage (sauf pour -04-01s qui rompt à .062) / Bei mittlerem Klemmbereich (mid.) reißt der Dorn bündig mit dem Nietkopf ab (außer -04-01, der bei .062 abreißt) / Q Rivet rottura del chiodo a livello della testa del rivetto per grip medio (eccetto -04-01s rottura a .062) / El punto de rotura del Q Rivet es a ras con la cabeza del remache en su grip intermedio (excepto el -04-01s. que rompe a .062)

Ø nom.	 lbf <sup>2)</sup>	 lbf <sup>2)</sup>
1/8" (3.2 mm)	350	325
5/32" (4.0 mm)	525	450
3/16" (4.8 mm)	750	650
1/4" (6.4 mm)	1250	1050

2) typical values / valeurs moyennes / typische Werte / Valori tipici / resistencias máximas recomendadas



An Acument™ Global Technologies Company

www.avdel-global.com

© 2007 Acument Intellectual Properties, LLC

10.2007, page 2/2

Data shown is subject to change without prior notice as a result of continuous product development and improvement policy.  
Your local Avdel representative is at your disposal should you need to confirm latest information.