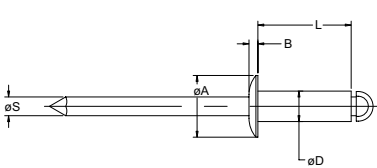
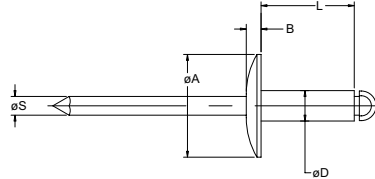


N Rivet BSPS / BSLS / BSCS

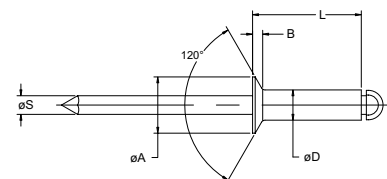
English	Français	Deutsch	Italiano	Español
Body: Aluminium 5052 Natural	Corps: Aluminium 5052 Brut	Hülse: Aluminium 5052 Blank	Corpo: Alluminio 5052 Nessuna finitura	Cuerpo: Aluminio 5052 Natural
Stem: Steel Natural	Tige: Acier Brut	Dorn: Stahl Blank	Gambo: Acciaio Nessuna finitura	Vástago: Acero Natural
IFI 114 Grade 19				



N Rivet BSPS
Protruding head / Tête bombée /
Flachrundkopf / Testa tonda /
Cabeza alomada



N Rivet BSLS
Large flange / Tête large /
Flachrundkopf, extragroß /
Testa larga / Cabeza ancha



N Rivet BSCS
Countersunk / Tête fraisée
Senkkopf / Testa svasata
Cabeza avellanada

Ø nom.	Ø		Ø		Ø D	L max.	Ø S	BSPS Protruding head			BSLS Large flange			BSCS Countersunk				
	min.	max.	min.	max.				Ø A	B max.	Part No. /ref BSPS-	Ø A	B max.	Part No. /ref BSLS-	Ø A	B ref.	Part No. /ref BSCS-		
3/32" (2.4 mm)	.020	.125	.097	.100	.093	.250	.057	.188	.032	-03-02			.174	.027	-03-02			
	.126	.250														-03-04	-03-04	
	.251	.375														-03-06	-03-06	
1/8" (3.2 mm)	.020	.062	.129	.133	.125	.212	.076	.250	.040	-04-01	.375	.065	-04-02	.220	.031	-04-02		
	.063	.125				.275											-04-03	-04-03
	.126	.187				.337											-04-04	-04-04
	.188	.250				.400											-04-05	-04-05
	.251	.312				.462											-04-06	-04-06
	.313	.375				.535											-04-07	-04-07
	.376	.437				.602											-04-08	-04-08
	.438	.500				.670											-04-09	-04-09
	.501	.562				.738											-04-10	-04-10
	.563	.625				.805											-04-10	-04-10
5/32" (4.0 mm)	.020	.125	.160	.164	.156	.300	.095	.312	.050	-05-02	.468	.075	-05-04	.281	.040	-05-04		
	.126	.250				.425											-05-06	-05-06
	.251	.375				.495											-05-08	-05-08
	.376	.500				.695											-05-10	-05-10
	.501	.625				.830											-05-10	-05-10
3/16" (4.8 mm)	.020	.125	.192	.196	.187	.325	.114	.375	.060	-06-02	.625	.092	-06-04	.348	.050	-06-04		
	.126	.250				.450											-06-06	-06-06
	.251	.375				.575											-06-08	-06-08
	.376	.500				.700											-06-10	-06-10
	.501	.625				.850											-06-12	-06-12
	.626	.750				.980											-06-14	-06-14
	.751	.875				1.110											-06-16	-06-16
	.876	1.000				1.240											-06-16	-06-16

all dimensions in inches / en pouces / alle Maße in Zoll / in pollici / en pulgadas



An Acument™ Global Technologies Company



www.avdel-global.com

© 2007 Acument Intellectual Properties, LLC

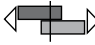

07.2007, page 1/2

Data shown is subject to change without prior notice as a result of continuous product development and improvement policy.
Your local Avdel representative is at your disposal should you need to confirm latest information.

N Rivet BSPS / BSLS / BSCS

Ø nom.					Ø D	L max.	Ø S	BSPS Protruding head			BSLS Large flange			BSCS Countersunk		
	min.	max.	min.	max.				Ø A	B max.	Part No. /ref BSPS-	Ø A	B max.	Part No. /ref BSLS-	Ø A	B max.	Part No. /ref BSCS-
1/4" (6.4 mm)	.020	.125	.257	.261	.250	.375	.151	.500	.080	-08-02	.750	.107	-08-04	.468	.071	-08-04
	.126	.250				.500				-08-04						-08-04
	.251	.375				.625				-08-06						-08-06
	.376	.500				.750				-08-08						-08-08
	.501	.625				.900				-08-10						-08-10
	.626	.750				1.030				-08-12						-08-12
	.751	.875				1.160				-08-14						-08-14
	.876	1.000				1.290				-08-16						-08-16

all dimensions in inches / en pouces / alle Maße in Zoll / in pollici / en pulgadas

Ø nom.	 lbf min. ¹⁾	 lbf min. ¹⁾
3/32" (2.4 mm)	90	120
1/8" (3.2 mm)	170	220
5/32" (4.0 mm)	260	350
3/16" (4.8 mm)	380	500
1/4" (6.4 mm)	700	920

1) Tested per IFI 135 Specification 2.1 and 2.2
 Testé par spécification IFI 135 2.1 et 2.2
 Getestet nach IFI 135 Spezifikation 2.1 und 2.2
 Provato secondo specifica IFI 135 2.1 e 2.2
 Comprobado según especificación IFI 135 2.1 y 2.2



An Acument™ Global Technologies Company

www.avdel-global.com

© 2007 Acument Intellectual Properties, LLC

07.2007, page 2/2

Data shown is subject to change without prior notice as a result of continuous product development and improvement policy.
 Your local Avdel representative is at your disposal should you need to confirm latest information.