

KLAMP-TITE® Fastening System

Non-Structural

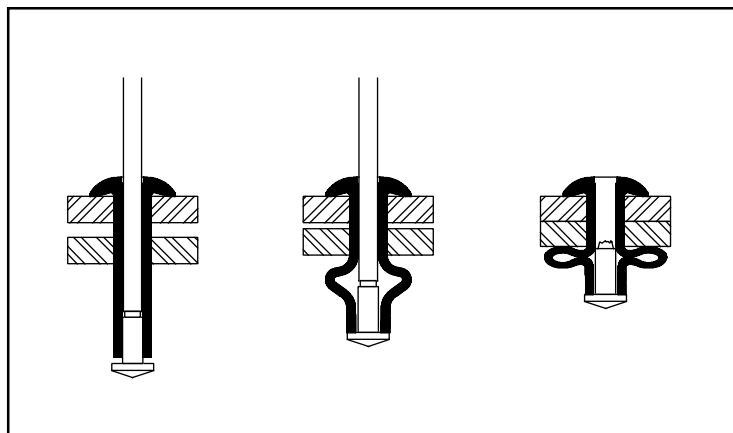
Product Information

Provides good vibration resistance. Exceptional clamp-up strength. Wide grip range.

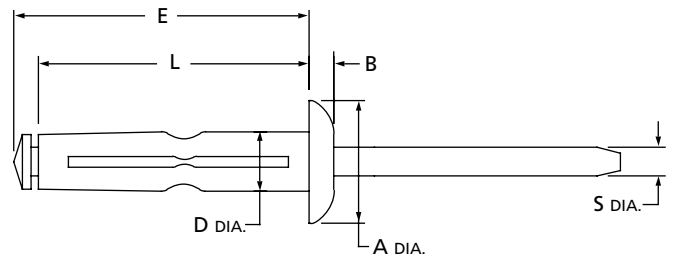


Benefits:

- **Grip Tolerant**
Will fasten materials over a wide range of sheet thicknesses.
- **Hole Preparation**
The three legs of the Klamp-tite rivet provide a large blind-side bearing surface over which to distribute loads.
- **No Special Nose tip**
No special nose tip required to install non-structural Klamp-tite fasteners.



Rivet Diam.	BA Series Aluminum Body Aluminum Stem lbs. f (N)	
	Shear	Tensile
3/16" (4,8mm)	290 (1290)	380 (1690)
1/4" (6,4mm)	420 (1868N)	588 (2615N)



Non Structural

Nom. Rivet Diam.	Hole Size	Drill Number	S Stem Diam.	D Sleeve Diam.	Protruding Head		Countersunk Head	
					A Head Diam.	B Head Thick.	A Head Diam.	B Head Thick
3/16" (4,8mm)	.204-.209 (5,18-5,31)	#5	.114 (2,90)	.198 (5,03)	.445 (11,30)	.088 (2,24)	.335 (8,57)	.070 (1,79)
1/4" (6,4mm)	.252-.262 (6,40-6,65)	F	.151 (3,84)	.242 (6,15)	.560 (14,22)	.113 (2,87)		

Note: L & E dimensions vary with each grip length. (See the "Part Selection" table below.)

Rivet Diam.	G Rivet Grip Range	L Rivet Length Max.	E Blind Length Max.	BA Series Aluminum Rivet Aluminum Stem	
				Protruding Head	Ctsk. Head
3/16"(6) (4,8mm)	.050-.250 (1.27-6.35)	.895 (22.72)	1.0 (25.40)	BAPK-64	
	.187-.375 (4.75-9.53)	.990 (25.13)	1.095 (27.81)	BAPK-66	BACK-66
	.375-.562 (9.53-14.27)	1.113 (28.25)	1.218 (30.94)	BAPK-69	
	.562-.750 (14.27-19.05)	1.296 (32.92)	1.431 (36.32)	BAPK-612	BACK-612
1/4"(8) (6,4mm)	.060-.250 (1.52-6.35)	.925 (23.50)	1.042 (26.47)	BAPK-84	
	.187-.375 (4.75-9.53)	1.050 (26.67)	1.167 (29.64)	BAPK-86	

Notes:

1. Items listed on these pages reflect our manufacturing capability.
2. Finishes: aluminum stems, and rivets are coated with a wax lubricant.