

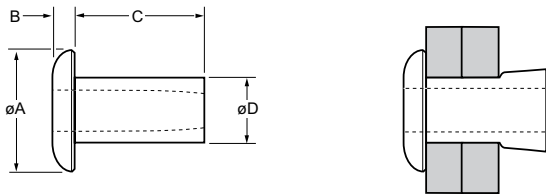
# Chobert® 1162



For installation information please refer to the tooling overview and manuals on our website [www.avdel-global.com](http://www.avdel-global.com).  
 Pour les conditions de pose, merci de vous référer à la description de l'outil et aux manuels disponibles sur notre site Web.  
 Angaben zur Verarbeitung entnehmen Sie bitte der Geräteübersicht und den Betriebsanleitungen auf unserer Website.  
 Per informazioni sull'installazione preghiamo consultare i manuali e la panoramica degli attrezzi sul nostro sito web.  
 Para ver información sobre máquinas de colocación, consulte nuestra página web, apartados visión general de máquinas y manuales.

| English                        | Français                          | Deutsch                  | Italiano                        | Español                |
|--------------------------------|-----------------------------------|--------------------------|---------------------------------|------------------------|
| Low profile head               | Tête profil bas                   | Flachkopf                | Testa basso profilo             | Cabeza perfil bajo     |
| Aluminium alloy*<br>(2.5 % Mg) | Alliage d'aluminium*<br>(2.5% Mg) | Aluminium*<br>(2.5 % Mg) | Lega di alluminio*<br>(2.5% Mg) | Aluminio*<br>(2.5% Mg) |
| Natural                        | Brut                              | Blank                    | Nessuna finitura                | Natural                |

\*: AA 5052 DIN 1725 AlMg2.5 Werkstoff 3.3523



| ø     |       |      |      |      | øA   | B     | C           | øD   |       | Fasteners per pod/<br>Nombre de rivets<br>par chargeur /<br>Niete pro Magazin/<br>Rivetti per carica-<br>tore / Uds./carga | Part No/ref |             |             |      |
|-------|-------|------|------|------|------|-------|-------------|------|-------|--|-------------|-------------|-------------|------|
|       | nom.  | min. | max. | min. |      |       |             |      |       |  |             | max.        | ± .01       | max. |
| 1/8"  |       |      | .062 |      | .129 | .1315 | .253        | .041 | .1275 | 134  | 71          | 01162-00404 |             |      |
|       |       | .062 | .125 |      |      |       |             |      |       |  | .192        | 51          | 01162-00406 |      |
|       |       | .125 | .187 |      |      |       |             |      |       |  | .254        | 39          | 01162-00408 |      |
|       |       | .187 | .250 |      |      |       |             |      |       |  | .317        | 32          | 01162-00410 |      |
|       |       | .250 | .312 |      |      |       |             |      |       |  | .379        | 27          | 01162-00412 |      |
|       |       | .312 | .375 |      |      |       |             |      |       |  | .441        | 23          | 01162-00414 |      |
|       |       | .375 | .437 |      |      |       |             |      |       |  | .503        | 21          | 01162-00416 |      |
|       | 5/32" |      | .062 | .125 |      |       |             |      |       |  | .161        | .164        | .312        | .051 |
|       |       | .093 | .155 |      | .215 |       | 01162-00507 |      |       |  |             |             |             |      |
|       |       | .125 | .187 |      | .247 | 38    | 01162-00508 |      |       |  |             |             |             |      |
|       |       | .187 | .250 |      | .372 | 31    | 01162-00510 |      |       |  |             |             |             |      |
|       |       | .250 | .312 |      | .434 | 27    | 01162-00512 |      |       |  |             |             |             |      |
|       |       | .312 | .375 |      | .497 | 23    | 01162-00514 |      |       |  |             |             |             |      |
|       |       | .375 | .437 |      |      | 21    | 01162-00516 |      |       |  |             |             |             |      |
| 3/16" |       |      | .062 |      | .191 | .194  | .387        | .061 | .410  | .1895  |             |             |             |      |
|       |       | .062 | .125 |      |      |       |             |      |       |  | .223        | 38          | 01162-00607 |      |
|       |       | .125 | .187 |      |      |       |             |      |       |  | .285        | 33          | 01162-00609 |      |
|       |       | .187 | .250 |      |      |       |             |      |       |  | .348        | 28          | 01162-00611 |      |
|       |       | .250 | .312 |      |      |       |             |      |       |  | .473        | 24          | 01162-00613 |      |
|       |       | .312 | .375 |      |      |       |             |      |       |  | .535        | 21          | 01162-00615 |      |
|       |       | .375 | .437 |      |      |       |             |      |       |  | .598        | 19          | 01162-00617 |      |
|       |       | .437 | .500 |      |      |       |             |      |       |  |             | 17          | 01162-00619 |      |

all dimensions in inches / en pouces / alle Maße in Zoll / in pollici / en pulgadas

1) typical values / valeurs moyennes / typische Werte / Valori tipici / resistencias máximas recomendadas



[www.avdel-global.com](http://www.avdel-global.com)

© 2011 Infastech

Chobert® is a trademark of Avdel UK Limited

06.2011

Data shown is subject to change without prior notice as a result of continuous product development and improvement policy.  
 Your local Avdel representative is at your disposal should you need to confirm latest information.