

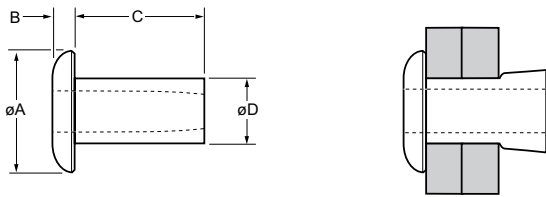
Chobert® 1121



For installation information please refer to the tooling overview and manuals on our website www.avdel-global.com.
 Pour les conditions de pose, merci de vous référer à la description de l'outil et aux manuels disponibles sur notre site Web.
 Angaben zur Verarbeitung entnehmen Sie bitte der Geräteübersicht und den Betriebsanleitungen auf unserer Website.
 Per informazioni sull'installazione preghiamo consultare i manuali e la panoramica degli attrezzi sul nostro sito web.
 Para ver información sobre máquinas de colocación, consulte nuestra página web, apartados visión general de máquinas y manuales.

English	Français	Deutsch	Italiano	Español
Dome head	Tête plate	Flachrundkopf	Testa tonda	Cabeza alomada
Low carbon steel*	Acier bas carbone*	Stahl*	Acciaio a basso tenore di carbonio*	Acero bajo en carbono*
Zinc plated	Revêtement zingué	Verzinkt	Zincato	Zincado
Clear trivalent passivated	Passivation claire trivalente	Klar chromatiert, Cr6-frei	Passivazione chiara trivalente	Pasivado claro trivalente

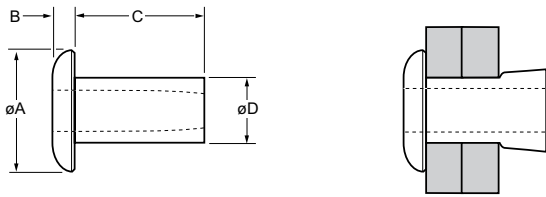
*: SAE 1008 / EN 10263-2 C8C (DIN 10263-2 C8C, Qst 34-3)



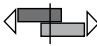


ø	[Diagram]		[Diagram]		øA	B	C	øD	[Diagram]	Fasteners per pod/ Nombre de rivets par chargeur / Niete pro Magazin/ Rivetti per carica- tore / Uds./carga	Part No/ref		
	min.	max.	min.	max.								max.	max.
1/8"	.000	.062	.129	.132	.215	.044	.125	.128	314	71	01121-00404		
	.031	.093					.156					57	01121-00405
	.062	.125					.187					51	01121-00406
	.125	.187					.250					39	01121-00408
	.187	.250					.312					32	01121-00410
	.250	.312					.375					27	01121-00412
5/32"	.062	.125	.161	.164	.255	.057	.187	.159	539	47	01121-00506		
	.125	.187					.250					38	01121-00508
	.187	.250					.312					31	01121-00510
	.250	.312					.375					27	01121-00512
	.312	.375					.437					23	01121-00514
	.375	.437					.500					21	01121-00516

all dimensions in inches / en pouces / alle Maße in Zoll / in pollici / en pulgadas

1) typical values / valeurs moyennes / typische Werte / Valori tipici / resistencias máximas recomendadas



ø					øA	B	C	øD		Fasteners per pod/ Nombre de rivets par chargeur / Niete pro Magazin/ Rivetti per carica- tore / Uds./carga	Part No/ref	
	nom.	min.	max.	min.								max.
3/16"	.000	.062	.191	.194	.349	.070	.157	.191	719		50	01121-00605
	.062	.125					.219				38	01121-00607
	.125	.187					.281				33	01121-00609
	.187	.250					.344				28	01121-00611
	.250	.312					.406				24	01121-00613
	.312	.375					.469				21	01121-00615
	.375	.437					.531				19	01121-00617
	.437	.500					.594				17	01121-00619
	1/4"	.125					.187				.250	.253
.187		.250	.344	27	01121-00811							
.250		.312	.406	24	01121-00813							
.312		.375	.469	21	01121-00815							
.375		.437	.531	19	01121-00817							
.437		.500	.594	17	01121-00819							

all dimensions in inches / en pouces / alle Maße in Zoll / in pollici / en pulgadas

1) typical values / valeurs moyennes / typische Werte / Valori tipici / resistencias máximas recomendadas