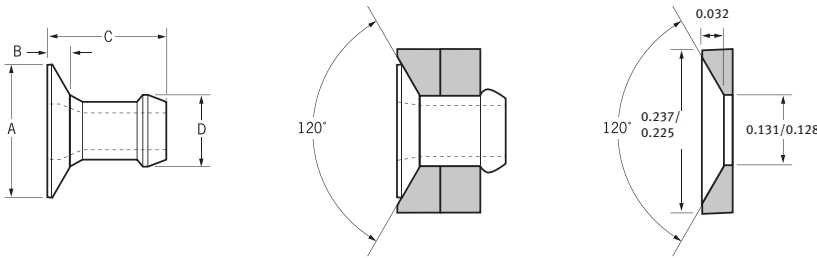




English	Français	Deutsch	Italiano	Español
120° Countersunk	120° Tête fraisée	120° Senkkopf	120° Testa svasata	120° Cabeza avellanada
Aluminium alloy* (5 % Mg)	Alliage d'aluminium* (5% Mg)	Aluminium* (5 % Mg)	Lega di alluminio* (5% Mg)	Aluminio* (5% Mg)
Natural	Brut	Blank	Nessuna finitura	Natural

*: BS 1473 5056A DIN 1725 AlMg5 Werkstoff 3.3555



Rec. c/sunk hole dimensions (ø 1/8" only)
 Dimensions recommandées du trou fraisé (1/8" seulement)
 Empf. Abmessungen für Senkloch (nur ø 1/8")
 Dimensioni raccomandate del foro svasato (solo 1/8").
 Dimensiones del taladro avellanado recomendadas (solo 1/8")

ø	A		B		C	D	lb ^{f1)}	lb ^{f1)}	Fasteners per pod / Nombre de rivets par chargeur / Niete pro Magazin / Rivetti per caricatore / Uds./carga	Part No/ref		
	min.	max.	min.	max.								
1/8"	.060	.110	.1285	.1315	.235	.035	.188	.1245	170	295	± 1	01802-00406
	.100	.150					.228					01802-00407
	.140	.190					.268					01802-00408
	.180	.230					.308					01802-00410
	.220	.270					.348					01802-00411
5/32"	.062	.115	.1562	.1592	.275	.040	.204	.1535	255	390	± 1	01802-00505
	.085	.135					.224					01802-00506
	.105	.155					.244					01802-00507
	.145	.195					.284					01802-00509
	.185	.235					.324					01802-00511
	.225	.275					.364					01802-00513

all dimensions in inches / en pouces / alle Maße in Zoll / in pollici / en pulgadas

1) typical values / valeurs moyennes / typische Werte / Valori tipici / resistencias máximas recomendadas