

# Briv® 1801, 1804

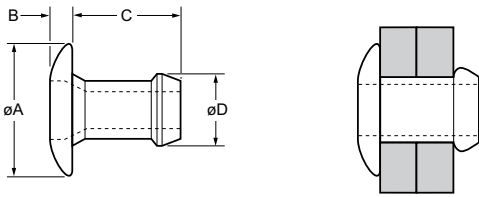


For installation information please refer to the tooling overview and manuals on our website [www.avdel-global.com](http://www.avdel-global.com).  
 Pour les conditions de pose, merci de vous référer à la description de l'outil et aux manuels disponibles sur notre site Web.  
 Angaben zur Verarbeitung entnehmen Sie bitte der Geräteübersicht und den Betriebsanleitungen auf unserer Website.  
 Per informazioni sull'installazione preghiamo consultare i manuali e la panoramica degli attrezzi sul nostro sito web.  
 Para ver información sobre máquinas de colocación, consulte nuestra página web, apartados visión general de máquinas y manuales.

English	Français	Deutsch	Italiano	Español
Dome head	Tête plate	Flachrundkopf	Testa tonda	Cabeza alomada
Aluminium alloy* (5 % Mg)	Alliage d'aluminium* (5% Mg)	Aluminium* (5 % Mg)	Lega di alluminio* (5% Mg)	Aluminio* (5% Mg)
Natural	Brut	Blank	Nessuna finitura	Natural

\*: BS 1473 5056A DIN 1725 AlMg5 Werkstoff 3.3555

Option: for 2.5 % Mg aluminium alloy replace part no. 01801 with 01861 / pour 2.5 % Mg alliage d'aluminium remplacer la série 01801 par 01861 / für 2.5 % Mg Aluminium-Legierung ersetzen Sie 01801 durch 01861 / per 2.5 % Mg lega di alluminio sostituire 01801 con 01861 / con Aluminio (2,5 % de Mg) cambiar 01801 por 01861



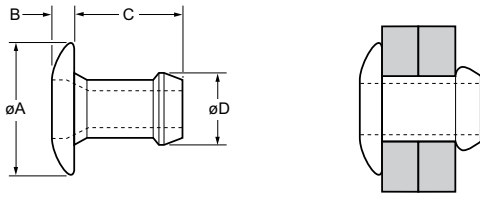
ø	Ø		Ø		øA	B	C	øD	lb <sup>f1</sup>	lb <sup>f1</sup>	Fasteners per pod / Nombre de rivets par chargeur / Niete pro Magazin / Rivetti per caricatore / Uds./ carga	natural / brut / blank / nessuna finitura / natural	anodised, dyed red / anodisé rouge / rot eloxiert / anodizzato rosso / anodizado rojo
	min.	max.	min.	max.									
3/32"	.045	.095	.093	.096	.162	.035	.157	.0923	60	100	64	1801-00304	01804-00304
	.085	.135					.197				52	1801-00306	01804-00306
	.125	.175					.237				44	1801-00308	01804-00308
	.165	.215					.277				38	1801-00310	01804-00310
	.205	.255					.317				34	1801-00312	01804-00312
	.245	.295					.357				30	1801-00314	01804-00314
	.265	.315					.377				28	1801-00315	01804-00315
	.285	.335					.397				27	1801-00316	01804-00316
	.305	.355					.417				26	1801-00317	01804-00317
	1/8"	.025					.075				.1285	.1315	.257
.045		.095	.172	58	1801-00404	01804-00404							
.065		.115	.192	50	1801-00405	01804-00405							
.085		.135	.212	48	1801-00406	01804-00406							
.125		.175	.252	42	1801-00408	01804-00408							
.165		.215	.292	37	1801-00410	01804-00410							
.205		.255	.332	33	1801-00412	01804-00412							
.245		.295	.372	29	1801-00414	01804-00414							
.285		.335	.412	26	1801-00416	01804-00416							

all dimensions in inches / en pouces / alle Maße in Zoll / in pollici / en pulgadas

1) typical values / valeurs moyennes / typische Werte / Valori tipici / resistencias máximas recomendadas



# Briv® 1801, 1804



ø	[Cross-section diagram]		[Thread diagram]		øA	B	C	øD	[Dimensional diagram]	[Dimensional diagram]	Fasteners per pod / Nombre de rivets par chargeur / Niete pro Magazin / Rivetti per caricatore / Uds./carga	natural / brut / blank / nessuna finitura / natural	anodised, dyed red / anodisé rouge / rot eloxiert / anodizzato rosso / anodizado rojo			
	min.	max.	min.	max.										max.	max.	max.
5/32"	.062	.115	.1562	.1592	.322	.039	.193	.1525	255	390	52	01801-00505	01804-00505			
	.085	.135					.213							49	01801-00506	01804-00506
	.105	.155					.233							44	01801-00507	01804-00507
	.145	.195					.273							39	01801-00509	01804-00509
	.185	.235					.313							34	01801-00511	01804-00511
	.225	.275					.353							31	01801-00513	01804-00513
	.265	.315					.393							26	01801-00515	01804-00515
	.305	.355					.433							24	01801-00517	01804-00517
	3/16"	.065					.130							.1910	.1940	.382
.080		.155	.240	42	01801-00607	01804-00607										
.145		.205	.290	35	01801-00609	01804-00609										
.195		.255	.340	31	01801-00611	01804-00611										
.245		.305	.390	27	01801-00613	01804-00613										
.295		.355	.440	24	01801-00615	01804-00615										
.345		.405	.490	22	01801-00617	01804-00617										
.395		.455	.530	20	01801-00619	01804-00619										
6.0 mm		.105	.155	.2338	.2373	.455	.053	.273	.2325	380	740	37	01801-06007			
	.145	.195	.313					33						01801-06009		
	.185	.235	.353					29						01801-06011		
	.225	.275	.393					26						01801-06013		
	.265	.315	.433					24						01801-06015		
	.305	.355	.473					23						01801-06017		

all dimensions in inches / en pouces / alle Maße in Zoll / in pollici / en pulgadas

1) typical values / valeurs moyennes / typische Werte / Valori tipici / resistencias máximas recomendadas