

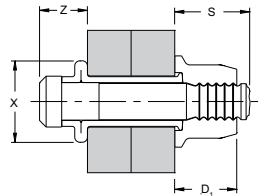
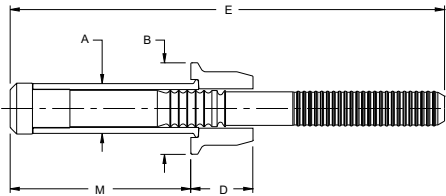
Avbolt® 21001



For installation information please refer to the tooling overview and manuals on our website www.avdel-global.com.
 Pour les conditions de pose, merci de vous référer à la description de l'outil et aux manuels disponibles sur notre site
 Angaben zur Verarbeitung entnehmen Sie bitte der Geräteübersicht und den Betriebsanleitungen auf unserer Website
 Per informazioni sull'installazione preghiamo consultare i manuali e la panoramica degli attrezzi sul nostro sito web.
 Para ver información sobre máquinas de colocación, consulte nuestra página web, apartados visión general de máquinas y manuales.

English	Français	Deutsch	Italiano	Español	****
Stem: Chromium Molybdenum steel* Black oxide	Tige: Acier* Noir	Dorn: Stahl* Schwarz	Gambo: Acciaio* Passivato nero	Vástago: Acero* Pavonado	 8 h
Sleeve: Carbon steel** Zinc plated Clear trivalent passivated	Douille: Acier** Revêtement zingué Passivation claire trivalente	Hülse: Stahl** Verzinkt Klar chromatiert, Cr6-frei	Bussola: Acciaio** Zincata Passivazione chiara trivalente	Cuerpo: Acero al carbono** Zincado Pasivado claro trivalente	 240 h
Collar: Carbon steel*** Zinc plated Clear trivalent passivated	Bague: Acier*** Revêtement zingué Passivation claire trivalente	Schließring: Stahl*** Verzinkt Klar chromatiert, Cr6-frei	Collare: Acciaio*** Zincato Passivazione chiara trivalente	Collar: Acero al carbono*** Zincado Pasivado claro trivalente	 240 h

*: EN 10263-4 34CrMo4 SAE 4135 SCM435 **: EN 10263-2 C8C SAE 1008 ***: EN 10263-4 23MnB4
 ****: to red rust / à la rouille rouge / bis Rotrost / alla ruggine rossa / al óxido rojo (ASTM B117)



ø nom.					ø A max.	ø B max.	D max.	D ₁ max.	E min.	M max.	S max.	X nom.	Z max.	 lbf min.	 lbf min.	Part No/ref
	min.	max.	min.	max.												
3/8" (10 mm)	.188	.313	.413	.435	.412	.739	.498	.571	2.905	.988	.722	.610	.377	10115	7250	21001-01204
	.313	.438							3.031	1.113						21001-01206
	.438	.563							3.157	1.238						21001-01208
	.563	.688							3.283	1.363						21001-01210
	.688	.813							3.409	1.488						21001-01212
	.813	.938							3.531	1.613						21001-01214
	.938	1.063							3.657	1.738						21001-01216
	1.063	1.188							3.783	1.863						21001-01218
	1.188	1.313							3.909	1.988						21001-01220
1/2" (12.7 mm)	.251	.376	.546	.581	.543	.957	.591	.634	3.172	1.253	.807	.812	.516	20150	13000	21001-01604
	.376	.501							3.297	1.378						21001-01606
	.501	.626							3.422	1.503						21001-01608
	.626	.751							3.548	1.628						21001-01610
	.751	.876							3.672	1.753						21001-01612
	.876	1.001							3.797	1.878						21001-01614
	1.001	1.126							3.922	2.003						21001-01616
	1.126	1.251							4.046	2.127						21001-01618
	1.251	1.376							4.170	2.250						21001-01620
5/8" (16 mm)	.250	.500	.687	.728	.681	1.160	.687	.790	4.044	1.549	1.200	1.000	.630	29000	20500	21001-02004
	.500	.750							4.294	1.799						21001-02008
	.750	1.000							4.544	2.049						21001-02012
	1.000	1.250							4.794	2.299						21001-02016
	1.250	1.500							5.044	2.549						21001-02020

all dimensions in inches / en pouces / alle Maße in Zoll / in pollici / en pulgadas

Notes / Notes / Hinweise / Note / Notas

Avbolt® fasteners are supplied with lubricated collars and must not be degreased. / Avbolt® sont lubrifiées et ne doivent pas être dégraissées. / Avbolt® sind mit einem Gleitmittel beschichtet, welches nicht entfernt werden darf. / I Avbolt® sono forniti lubrificati e non devono essere sgrassati. / Los Avbolt® se suministran lubricados y no deben ser desengrasados.



www.avdel-global.com

© 2010 Infastech

Avdel Patent Protected. Avbolt® is a trademark of Avdel UK Limited

05.2011

Data shown is subject to change without prior notice as a result of continuous product development and improvement policy.
 Your local Avdel representative is at your disposal should you need to confirm latest information.