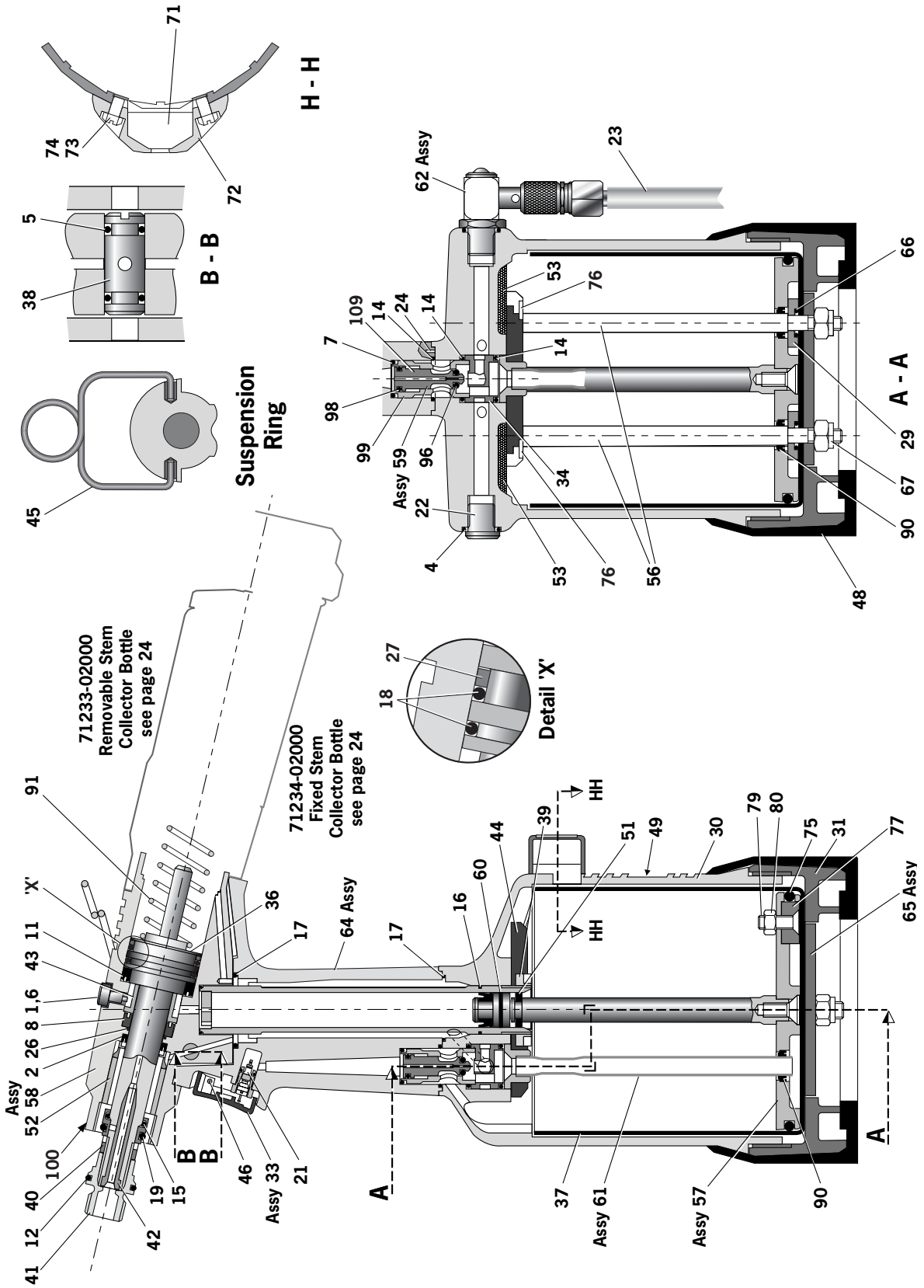


# Common Parts

## General Assembly of Common Parts 71233-02000 and 71234-02000



# Common parts

## Parts List for Common Parts 71233-02000 and 71234-02000

| 71233-02000 and 71234-0200 PARTS LIST |             |                           |            | * These are minimum recommended levels of spares based on regular servicing |             |   |            |
|---------------------------------------|-------------|---------------------------|------------|---|-------------|---|------------|
| ITEM                                  | PART N°     | DESCRIPTION               | QTY SPARES | ITEM  | PART N°     | DESCRIPTION                                   | QTY SPARES |
| 01                                    | 71230-02041 | BLEED SCREW               | 1          | 48  | 71221-02007 | RUBBER BOOT                                   | 1          |
| 02                                    | 07003-00333 | LIP SEAL                  | 1          | 49  | 71233-02027 | LABEL   | 1          |
| 04                                    | 07003-00127 | 'O' RING                  | 1          | 51  | 71230-03205 | GUIDE RING                                    | 1          |
| 05                                    | 07003-00189 | 'O' RING                  | 2          | 52  | 71210-02104 | SEAL HOUSING                                  | 1          |
| 06                                    | 07003-00194 | M5 BONDED SEAL            | 1          | 53  | 71210-02031 | SILENCER                                      | 2          |
| 07                                    | 07003-00271 | 'O' RING                  | 1          | 56  | 71221-02004 | TIE ROD                                       | 2          |
| 08                                    | 07003-00273 | LIP SEAL                  | 1          | 57  | 71231-03210 | PNEUMATIC PISTON ASSEMBLY (ITEMS 51, 75 & 90) | 1          |
| 11                                    | 07003-00341 | LIP SEAL                  | 1          | 58  | 71233-03330 | HEAD ASSEMBLY                                 | 1          |
| 12                                    | 07003-00277 | 'O' RING                  | 1          | 59  | 71210-03400 | VALVE SPOOL ASSEMBLY (ITEMS 96, 98, 99 & 109) | 1          |
| 14                                    | 07003-00281 | 'O' RING                  | 3          | 60  | 71230-03800 | SEAL ASSEMBLY                                 | 1          |
| 15                                    | 07003-00204 | 'O' RING                  | 1          | 61  | 71230-03600 | TRANSFER TUBE ASSEMBLY                        | 1          |
| 16                                    | 07003-00287 | 'O' RING                  | 1          | 62  | 71210-03700 | ON/OFF VALVE ASSEMBLY                         | 1          |
| 17                                    | 07003-00288 | 'O' RING                  | 2          | 64  | 71213-02016 | HANDLE ASSEMBLY                               | 1          |
| 18                                    | 07003-00342 | 'O' RING                  | 2          | 65  | 71221-02014 | BASE PLATE ASSEMBLY                           | 1          |
| 19                                    | 07003-00310 | 'O' RING                  | 1          | 66  | 07003-00027 | 'O' RING                                      | 2          |
| 21                                    | 07005-00088 | TRIGGER VALVE             | 1          | 67  | 07002-00108 | M6 NYLOC NUT                                  | 2          |
| 22                                    | 07005-01274 | 1/8" BSP PLUG             | 1          | 71  | 71221-20105 | MODIFIED COUNTER                              | 1          |
| 23                                    | 07008-00010 | 6" FLEXIBLE HOSE          | 1          | 72  | 71221-20101 | COUNTER MOLDING                               | 1          |
| 24                                    | 07007-00224 | 3mm DIAx1.0mm SPIROL PIN  | 2          | 73  | 71221-20103 | MOULDING RETAINING NUT                        | 2          |
| 26                                    | 71233-02021 | BEARING TAPE - PISTON ROD | 1          | 74  | 71221-20102 | SPECIAL M4 SCREW                              | 2          |
| 27                                    | 71213-02022 | BEARING TAPE - PISTON     | 1          | 75  | 07003-00182 | 'O' RING                                      | 1          |
| 29                                    | 71221-02006 | SEALING WASHER            | 2          | 76  | 07002-00163 | WASHER  | 2          |
| 30                                    | 71223-02001 | BODY MACHINED             | 1          | 77  | 07007-01993 | CENTRE POLE MAGNET                            | 1          |
| 31                                    | 71221-02002 | BASE COVER                | 1          | 79  | 71221-20104 | M5 X 19 COUNTERSUNK SCREW                     | 1          |
| 33                                    | 71213-02051 | TRIGGER                   | 1          | 80  | 07002-00098 | M5 NYLOC NUT                                  | 1          |
| 34                                    | 71210-02009 | VALVE SEAT                | 1          | 90  | 07003-00274 | LIP SEAL                                      | 3          |
| 36                                    | 71233-02121 | HEAD PISTON               | 1          | 91  | 07490-03002 | SPRING  | 1          |
| 37                                    | 71221-02008 | CYLINDER LINER            | 1          | 96  | 07003-00268 | 'O' RING                                      | 1          |
| 38                                    | 71210-02013 | ROTARY VALVE              | 1          | 97  | 07003-00398 | 'O' RING                                      | 2          |
| 39                                    | 71210-02014 | CLAMP NUT                 | 1          | 98  | 07003-00042 | 'O' RING                                      | 1          |
| 40                                    | 71210-02103 | LOCKNUT                   | 1          | 99  | 71210-03401 | VALVE BODY                                    | 1          |
| 41                                    | 71210-02101 | JAW SPREADER HOUSING      | 1          | 100   | 07007-01503 | LABEL BOOK SYMBOL                             | 1          |
| 42                                    | 71230-02102 | VACUUM SLEEVE             | 1          | 103   | 07900-00841 | TOOL INSTRUCTION MANUAL (NOT SHOWN)           | 1          |
| 43                                    | 71230-02019 | SEAL RETAINER             | 1          | 105   | 07900-00849 | NOSE EQUIPMENT SPANNER (NOT SHOWN)            | 1          |
| 44                                    | 71213-02010 | TOP PLATE ASSEMBLY        | 1          | 106   | 07900-00890 | SEAL KIT DATA SHEET (NOT SHOWN)               | 1          |
| 45                                    | 71210-02022 | SUSPENSION RING           | 1          | 108   | 71213-03001 | WARNING LABEL                                 | 1          |
| 46                                    | 71210-02024 | TRIGGER PIN               | 1          | 109   | 71210-03402 | VALVE SPOOL                                   | 1          |

# Stem Collector Bottles Removable and Fixed

## 71233 Tool Removable

91 Ref see page 22

| REMOVABLE STEM COLLECTOR BOTTLE |                           |             |
|---------------------------------|---------------------------|-------------|
| ITEM                            | DESCRIPTION               | PART NUMBER |
| 1                               | LIP SEAL                  | 07003-00374 |
| 2                               | O-RING                    | 07003-00278 |
| 3                               | O-RING                    | 07003-00398 |
| 4                               | END CAP ASSEMBLY          | 71233-05103 |
| 5                               | WARNING LABEL             | 71213-03001 |
| 6                               | BOTTLE ADAPTOR            | 71213-05104 |
| 7                               | DEFLECTOR                 | 71213-05101 |
| 8                               | RETAINING NUT             | 71213-05102 |
| 9                               | COLLECTOR BOTTLE ASSEMBLY | 71213-05100 |

## 71234 Tool Fixed

91 Ref see page 22

| FIXED STEM COLLECTOR BOTTLE |                                 |             |
|-----------------------------|---------------------------------|-------------|
| ITEM                        | DESCRIPTION                     | PART NUMBER |
| 1                           | LIP SEAL                        | 07003-00374 |
| 2                           | END CAP ASSEMBLY                | 71231-02001 |
| 3                           | RETAINING NUT                   | 71210-02028 |
| 4                           | FIXED COLLECTOR BOTTLE ASSEMBLY | 71210-20400 |
| 6                           | SEAL                            | 71210-02029 |
| 7                           | O' RING                         | 07003-00278 |
| 8                           | BOTTLE ADAPTOR ASSEMBLY         | 71403-02110 |