

Servicing the Tool

Rotary Valve

Dismantling

- Using a 4mm pin punch (07900-00158) drive Trigger Pin **40** out and remove Trigger Assembly **39**.
- Disconnect Hose Assembly **35** and remove Nut **32**.
- Separate Head Assembly **6** from Handle **29**. NOTE ORIENTATION OF ROTARY VALVE **48**.
- Push out Rotary Valve **48** together with 'O' Rings **49**.

Assemble in reverse order to Dismantling Instructions noting the following:

- Seals should be checked for damage and replaced if necessary, lubricated with Molykote® 55m grease.
- Ensure Rotary Valve **48** is assembled in correct orientation to align valve pins with forks on the Trigger Assembly **39**. See illustration below.

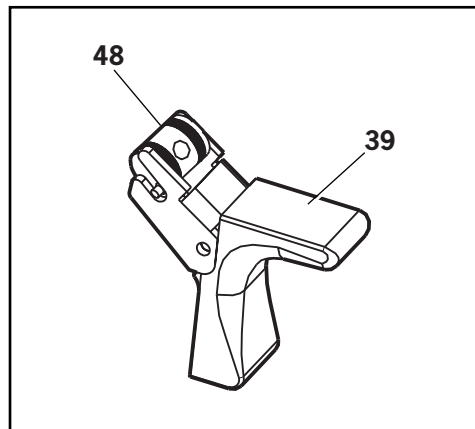
Trigger

Dismantling

- Using a 4mm pin punch (07900-00158) drive Trigger Pin **40** out and remove Trigger Assembly **39**.
- Unscrew Trigger Valve **38** using trigger valve extractor (0900-00692).

Assemble in reverse order to Dismantling Instructions noting the following:

- When assembling Trigger **39** the trigger forks locate on the pins each side of the Rotary Valve **48**.
- Ensure Rotary Valve **48** is orientated correctly. See illustration below.



Item numbers in **bold** refer to the General Assembly drawing and Parts List on pages 26 and 27.

Servicing the Tool

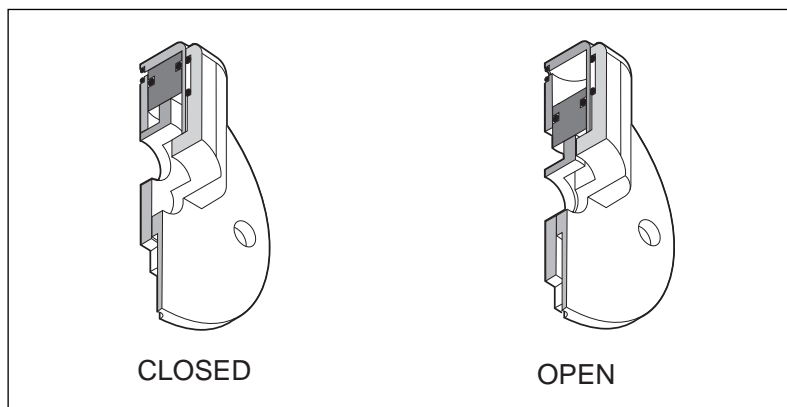
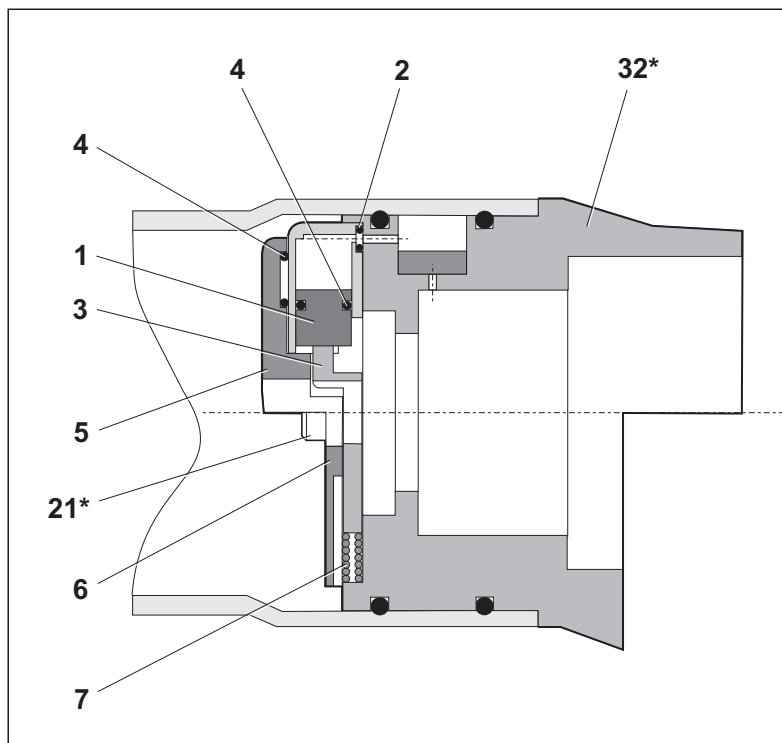
Stop Plate Assembly (71213-03900)

Assembly (see illustration below)

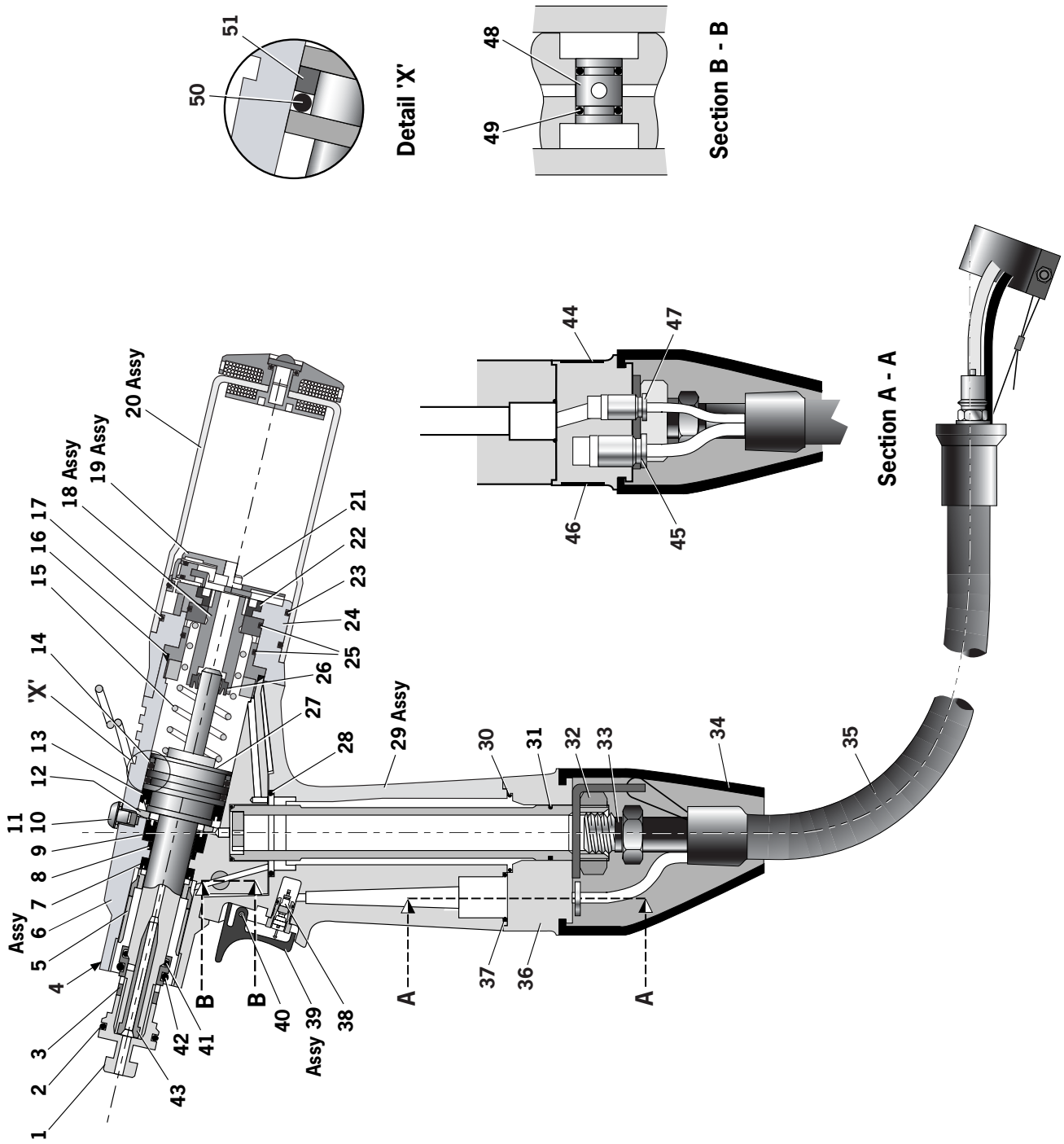
- Place 'O' Ring **2** into the recess in Housing **5** retain in position using grease Molykote® 55m.
- Assemble 'O' Ring **4** onto Piston **1** and push assembly into Housing **5** making sure it is in as far as it will go.
- Position the slot in Piston **1** parallel to the step face in Housing **5**.
- Slide Plate Shut Off **3** into the assembled parts **1, 2, 4,** and **5**. Retain parts in place using grease Molykote® 55m.
- Place 'O' Ring **4** into the recess of Cover Plate **6** retain in position using grease Molykote® 55m.
- Place Spring **7** into position, locate using the recesses in both Plate Shut Off **3** and Bottle Adaptor Assembly **24***.
- Position the above assembled parts onto Bottle Adaptor Assembly **24***.
- Secure in position using two Screws **21***.

*see pages 26 and 27.

ITEM	DESCRIPTION
1	PISTON
2	'O' RING
3	PLATE SHUT OFF
4	'O' RING
5	HOUSING
6	COVER PLATE
7	SPRING



General Assembly of Pistol 71401-02000(s)

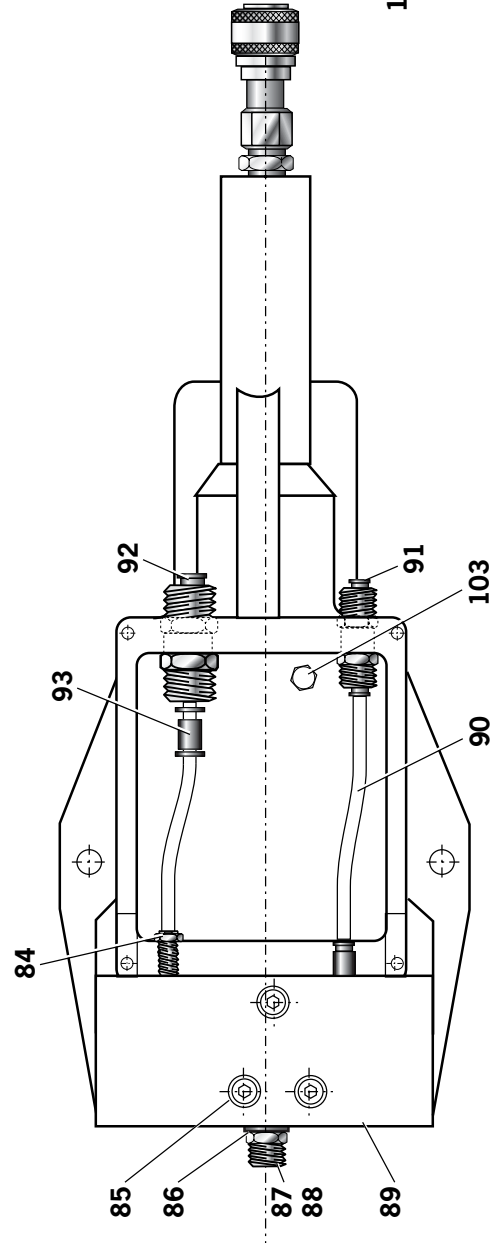
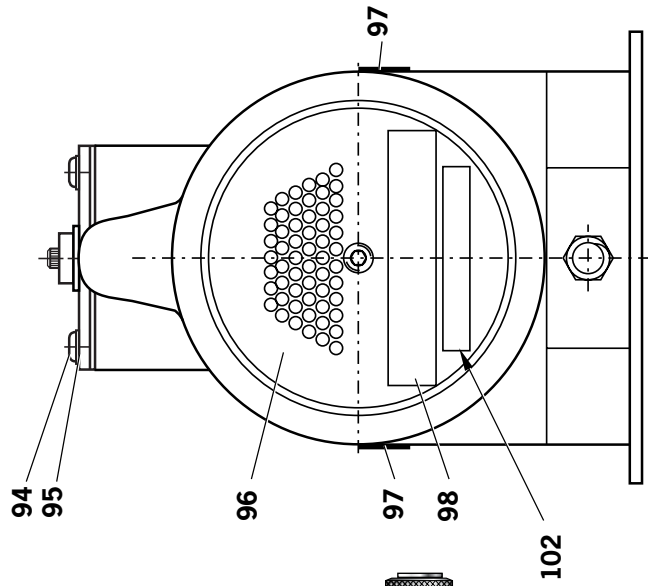
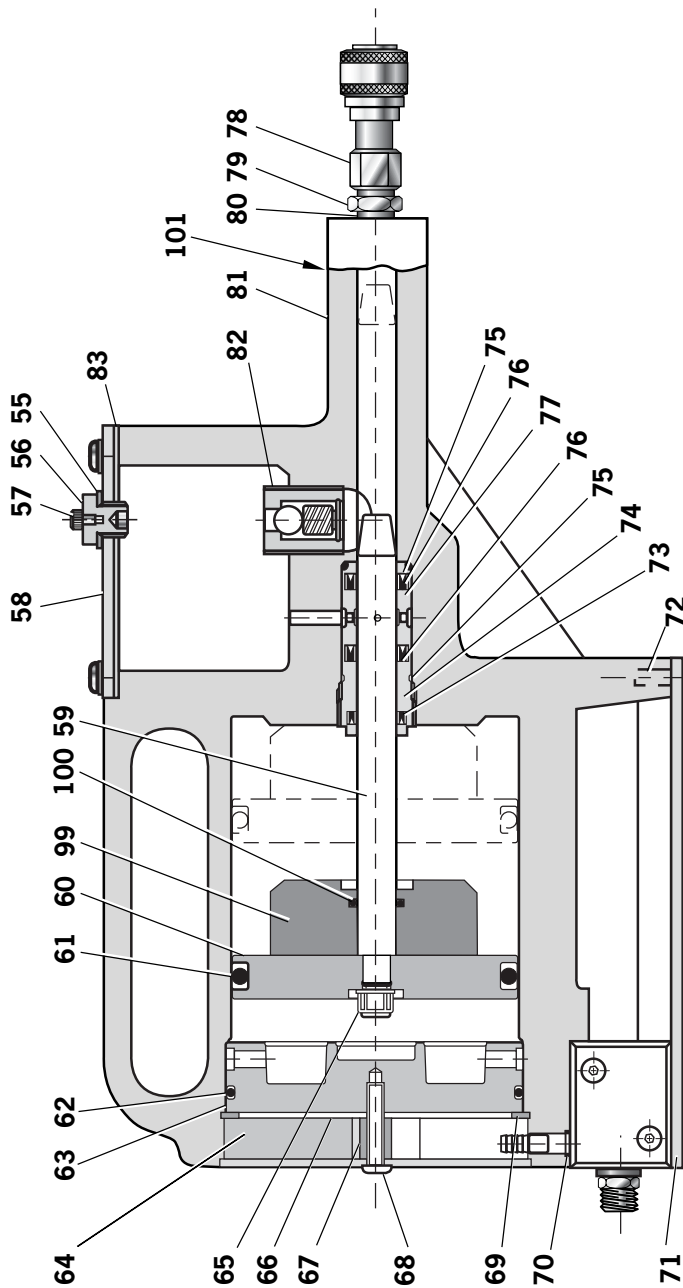


Parts List for 71401-02000(s)

*** These are minimum recommended levels of spares based on regular servicing**

71401-02000(s) PARTS LIST									
ITEM	PART N°	DESCRIPTION	QTY	SPARES*	ITEM	PART N°	DESCRIPTION	QTY	SPARES*
01	71213-02020	MALE 'T' ADAPTOR	1	-	26	07003-00274	LIP SEAL	1	-
02	07003-00277	'O' RING	1	1	27	71213-02121	HEAD PISTON	1	-
03	71210-02103	LOCKNUT	1	1	28	07003-00288	'O' RING	2	-
04	07007-01503	LABEL BOOK SYMBOL	1	-	29	71213-02013	HANDLE ASSEMBLY	1	-
05	71210-02104	SEAL HOUSING	1	1	30	07003-00288	'O' RING	2	2
06	71213-03320	HEAD ASSEMBLY	1	-	31	07003-00287	'O' RING	1	-
07	07003-00333	LIP SEAL	1	-	32	07002-00152	THIN NUT	1	-
08	71213-02021	BEARING TAPE - PISTON ROD	1	-	33	07003-00142	BONDED SEAL	1	1
09	07003-00273	LIP SEAL	1	-	34	71400-02002	GATOR	1	-
10	07001-00405	M5x5 HEXAGON SOCKET BUTTON HEAD SCREW	1	-	35	07008-00413	HOSE ASSEMBLY	1	-
11	07003-00194	M5 BONDED SEAL	1	-	36	71400-02001	HANDLE BASE	1	-
12	71210-02019	SEAL RETAINER	1	-	37	07003-00281	'O' RING	1	-
13	07003-00341	LIP SEAL	1	-	38	07005-00088	TRIGGER VALVE	1	-
14	07003-00275	LIP SEAL	1	-	39	71213-02008	TRIGGER ASSEMBLY	1	-
15	07490-03002	SPRING	1	-	40	71210-02024	TRIGGER PIN	1	-
16	07003-00278	'O' RING	1	-	41	07003-00204	'O' RING	1	-
17	07003-00416	'O' RING	1	-	42	07003-00310	'O' RING	1	-
18	71213-02025	END CAP ASSEMBLY	1	-	43	71210-02102	VACUUM SLEEVE	1	-
19	71213-03900	STOP PLATE ASSEMBLY	1	-	44	71401-02003	LABEL	1	-
20	71213-03800	STEM COLLECTOR BOTTLE ASSEMBLY	1	-	45	07005-01952	6 MM CONNECTOR	1	1
21	07001-00677	SCREW	2	-	46	71400-02031	LABEL	1	-
22	71213-02028	RETAINING NUT	1	-	47	07005-01951	4 MM CONNECTOR	1	1
23	07003-00415	'O' RING	1	-	48	71213-02012	ROTARY VALVE	1	-
24	71213-03000	BOTTLE ADAPTOR ASSEMBLY	1	-	49	07003-00189	'O' RING	2	-
25	07003-00398	'O' RING	2	-	50	07003-00342	'O' RING	1	-
					51	71213-02022	BEARING TAPE	1	-

General Assembly of Intensifier 71421-02000(s)



Parts List for 71421-02000(s)

71421-02000(s) PARTS LIST											
ITEM	PART N ^o	DESCRIPTION	QUANTITY	ITEM	PART N ^o	DESCRIPTION	QUANTITY	ITEM	PART N ^o	DESCRIPTION	QUANTITY
55	07003-00037	SEAL	1	82	07240-00400	NON-RETURN VALVE	1				
56	07240-00211	FILLER SCREW	1	83	07240-00209	GASKET	1				
57	07001-00418	SCREW	1	84	07005-00456	MALE HOSE CONNECTOR	1				
58	07240-00210	COVER PLATE	1	85	07001-00176	SCREW	1				
59	71420-02008	COVER PLATE	1	86	07003-00065	ALUMINIUM SEALING WASHER	1				
60	07240-00206	INTENSIFIER PISTON ROD	1	87	07005-00041	DOUBLE MALE CONNECTOR	1				
61	07003-00182	INTENSIFIER AIR PISTON	1	88	07007-00292	THREADED REDCAP	1				
62	07003-00183	'O' RING	1	89	07005-01524	VALVE	110 MM				
63	07240-00207	END COVER	1	90	07005-01084	4 MM Ø BLACK PLASTIC TUBE	1				
64	07240-00213	FOAM SILENCER	1	91	07005-01431	BULKHEAD CONNECTOR	1				
65	07002-00017	NUT	1	92	07005-00855	BULKHEAD UNION	1				
66	07240-00216	RETAINING PLATE	1	93	07005-01977	PUSH - IN CONNECTOR (WITH REDUCING SLEEVE)	4				
67	07240-00215	SPACER	1	94	07001-00554	SCREW	4				
68	07001-00417	SCREW	1	95	07002-00073	WASHER	1				
69	07004-00069	INTERNAL RETAINING RING	1	96	07240-00214	SILENCER COVER	2				
70	07003-00042	'O' RING	1	97	71401-02010	SELF ADHESIVE LABEL	2				
71	07240-00220	PROTECTION PLATE	1	98	07240-00217	LABEL (MAX PRESSURE)	1				
72	07001-00396	SCREW	4	99	71420-02005	PISTON STOP	1				
73	07003-00337	LIP SEAL	1	100	07003-00181	'O' RING	1				
74	71420-02007	SEAL PLUG	1	101	07007-01503	BOOK SYMBOL LABEL	1				
75	07003-00153	'O' RING	2	102	07007-01504	CE LABEL	1				
76	07003-00336	LIP SEAL	2	103	07005-00668	M5 PLUG	1				
77	71420-02006	SEAL HOUSING	1								
78	07005-00759	QUICK RELEASE CONNECTOR (FEMALE)	1								
79	07005-00406	DOUBLE MALE CONNECTOR	1								
80	07003-00142	SEAL	2								
81	71420-02300	BODY ASSEMBLY	1								