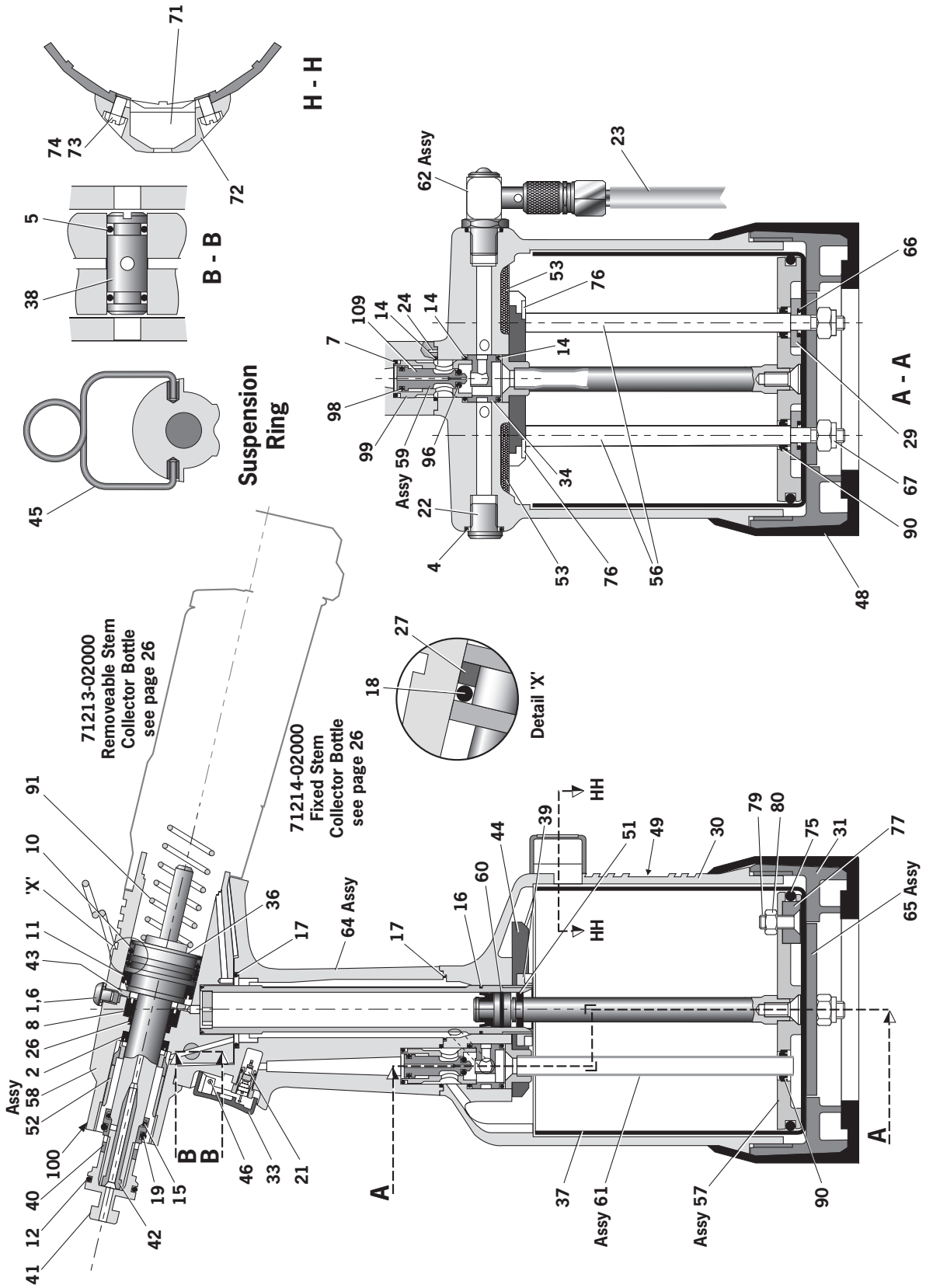


Common Parts

General Assembly of Common Parts 71213-02000 and 71214-02000



Common parts

Parts List for Common Parts 71213-02000 and 71214-02000

71213-02000 and 71214-0200 PARTS LIST				* These are minimum recommended levels of spares based on regular servicing			
ITEM	PART N°	DESCRIPTION	QTY SPARES	ITEM	PART N°	DESCRIPTION	QTY SPARES
01	07001-00405	M5x5 HEX SOCKET BUTTON HD SCREW	1	48	71210-02055	RUBBER BOOT	1
02	07003-00333	LIP SEAL	1	49	71213-02027	LABEL	1
04	07003-00127	'O' RING	1	51	71210-03205	GUIDE RING	1
05	07003-00189	'O' RING	2	52	71210-02104	SEAL HOUSING	1
06	07003-00194	M5 BONDED SEAL	1	53	71210-02031	SILENCER	2
07	07003-00271	'O' RING	1	56	71211-02004	TIE ROD	2
08	07003-00273	LIP SEAL	1	57	71211-03200	PNEUMATIC PISTON ASSEMBLY (ITEMS 51, 75 & 90)	1
10	07003-00275	LIP SEAL	1	58	71213-03330	HEAD ASSEMBLY	1
11	07003-00341	LIP SEAL	1	59	71210-03400	VALVE SPOOL ASSEMBLY (ITEMS 96, 98, 99 & 109)	1
12	07003-00277	'O' RING	1	60	71210-03800	SEAL ASSEMBLY	1
14	07003-00281	'O' RING	3	61	71210-03600	TRANSFER TUBE ASSEMBLY	1
15	07003-00204	'O' RING	1	62	71210-03700	ON/OFF VALVE ASSEMBLY	1
16	07003-00287	'O' RING	1	64	71213-02016	HANDLE ASSEMBLY	1
17	07003-00288	'O' RING	2	65	71221-02014	BASE PLATE ASSEMBLY	1
18	07003-00342	'O' RING	1	66	07003-00027	'O' RING	2
19	07003-00310	'O' RING	1	67	07002-00108	M6 NYLOC NUT	2
21	07005-00088	TRIGGER VALVE	1	71	71221-20105	MODIFIED COUNTER	1
22	07005-01274	1/8" BSP PLUG	1	72	71221-20101	COUNTER Moulding	1
23	07008-00010	6" FLEXIBLE HOSE	1	73	71221-20103	MOULDING RETAINING NUT	2
24	07007-00224	3mm DIAx10mm SPIROL PIN	2	74	71221-20102	SPECIAL M4 SCREW	2
26	71213-02021	BEARING TAPE - PISTON ROD	1	75	07003-00280	'O' RING	1
27	71213-02022	BEARING TAPE - PISTON	1	76	07002-00163	WASHER	2
29	71221-02006	SEALING WASHER	2	77	07007-01993	CENTRE POLE MAGNET	1
30	71213-02001	BODY MACHINED	1	79	71221-20104	M5 X 19 COUNTERSUNK SCREW	1
31	71211-02002	BASE COVER	1	80	07002-00098	M5 NYLOC NUT	1
33	71213-02051	TRIGGER	1	90	07003-00274	LIP SEAL	3
34	71210-02009	VALVE SEAT	1	91	07490-03002	SPRING	1
36	71213-02121	HEAD PISTON	1	96	07003-00268	'O' RING	1
37	71211-02008	CYLINDER LINER	1	97	07003-00398	'O' RING	2
38	71210-02013	ROTARY VALVE	1	98	07003-00042	'O' RING	1
39	71210-02014	CLAMP NUT	1	99	71210-03401	VALVE BODY	1
40	71210-02103	LOCKNUT	1	100	07007-01503	LABEL BOOK SYMBOL	1
41	71213-02020	MALE T ADAPTOR	1	103	07900-00841	TOOL INSTRUCTION MANUAL (NOT SHOWN)	1
42	71210-02102	VACUUM SLEEVE	1	105	07900-00849	NOSE EQUIPMENT SPANNER (NOT SHOWN)	1
43	71210-02019	SEAL RETAINER	1	106	07900-00890	SEAL KIT DATA SHEET (NOT SHOWN)	1
44	71213-02010	TOP PLATE ASSEMBLY	1	107	71213-05101	STEM DEFLECTOR	1
45	71210-02022	SUSPENSION RING	1	108	71213-03001	WARNING LABEL	1
46	71210-02024	TRIGGER PIN	1	109	71210-03402	VALVE SPOOL	1

Stem Collector Bottles Removable and Fixed

71213 Tool Removable

REMOVABLE STEM COLLECTOR BOTTLE		
ITEM	DESCRIPTION	PART NUMBER
1	LIP SEAL	07003-00274
2	O-RING	07003-00278
3	O-RING	07003-00398
4	END CAP ASSEMBLY	71213-05103
5	WARNING LABEL	71213-03001
6	BOTTLE ADAPTOR	71213-05104
7	DEFLECTOR	71213-05101
8	RETAINING NUT	71213-05102
9	COLLECTOR BOTTLE ASSEMBLY	71213-05100

71214 Tool Fixed

FIXED STEM COLLECTOR BOTTLE		
ITEM	DESCRIPTION	PART NUMBER
1	LIP SEAL	07003-00274
2	END CAP ASSEMBLY	71403-02102
3	RETAINING NUT	71210-02028
4	FIXED COLLECTOR BOTTLE ASSEMBLY	71210-20400
5	O' RING	07003-00067
6	SEAL	71210-02029
7	'O' RING	07003-00278
8	BOTTLE ADAPTOR ASSEMBLY	71403-02110