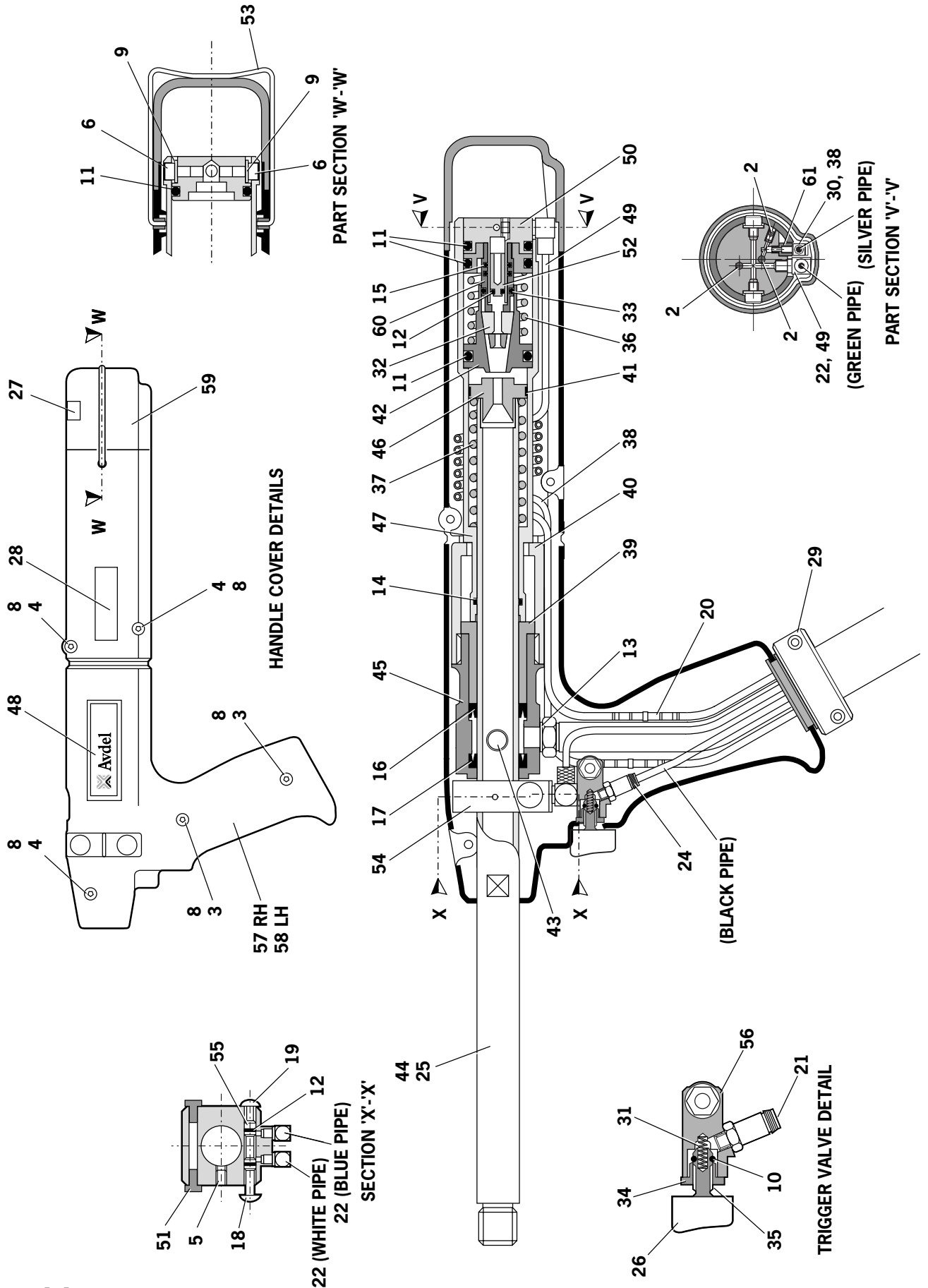


General Assembly of Base Tool 07536-02200



Parts List for Base Tool 07536-02200

07536-02200 PARTS LISTS									
ITEM	PART N°	DESCRIPTION	QTY	SPARES	ITEM	PART N°	DESCRIPTION	QTY	SPARES
1	07007-00392	CABLE TIE (NOT SHOWN)	1	-	36	07154-00404	SPRING	1	-
2	07001-00499	M3x5 LONG SOCKET SET SCREW	3	-	37	07490-03002	BARREL RETURN SPRING	1	-
3	07001-00262	M4x22 LONG SOCKET HEAD CAP SCREW	1	-	38	07536-02211	3MM AIR CURSOR CONCERTINA TUBE - SILVER	1	-
4	07001-00401	M4x10 LONG SOCKET HEAD CAP SCREW	4	-	39	07536-00203	PISTON	1	-
5	07001-00404	M5x6 LONG SOCKET HEAD SET SCREW	1	-	40	07530-00204	STROKE LIMITER	1	-
6	07001-00504	M4x6 LONG SOCKET HEAD CAP SCREW	2	2	41	07530-00206	RUBBING STRIP	1	1
7					42	07536-00208	JAW HOUSING	1	-
8	07002-00134	M4 HEX NUT	4	-	43	07530-00500	BLEED PLUG ASSEMBLY [ITEMS 62 TO 65] ●	1	-
9	07002-00153	M4 WASHER [PLASTIC]	2	-	44	07536-02201	BARREL	1	-
10	07003-00022	'O' RING	1	-	45	07530-02202	BODY	1	-
11	07003-00113	'O' RING	3	3	46	07530-02205	BARREL PLUG	1	-
12	07003-00121	'O' RING	3	3	47	07536-02207	TAIL JAW CYLINDER	1	-
13	07003-00142	1/8" BSP BONDED SEAL	1	1	48	07530-02210	LABEL	2	-
14	07003-00167	'O' RING	1	1	49	07536-02212	4MM AIR CURSOR CONCERTINA TUBE - GREEN	1	-
15	07003-00386	'O' RING	2	-	50	07536-02213	REAR PLUG	1	-
16	07003-00236	SEAL [DYNAMIC]	1	1	51	07530-00310	BLANKING PLUG	2	-
17	07003-00237	SEAL [STATIC]	1	-	52	07536-02214	STOP	1	-
18	07004-00058	1/8" STARLOCK WASHER CHROME	1	-	53	07530-02220	CLIP	1	-
19	07004-00059	1/8" STARLOCK WASHER BLACK	1	-	54	07530-02301	SWITCH BLOCK	1	-
20	07005-10073	3MM CONNECTOR	1	-	55	07530-02302	AIR TAIL JAW SPOOL	1	-
21	07005-01357	COLLET TYPE CONNECTOR	1	-	56	07530-02311	TRIGGER HOUSING	1	-
22	07005-01571	ELBOW CONNECTOR	3	-	57	07536-02601	HANDLE MOULDING ASSEMBLY RIGHT HAND	1	-
23	07536-02216	LOCKNUT	1	-	58	07536-02602	HANDLE MOULDING ASSEMBLY LEFT HAND	1	-
24	07005-10074	2MM CONNECTOR	1	-	59	07530-02603	END CAP	1	-
25	07007-00017	DUST CAP	1	-	60	07536-02800	TAIL JAW PISTON ASSEMBLY	1	-
26	07007-00300	TRIGGER BUTTON	1	-	61	07536-02215	FITTING ADAPTER	1	-
27	07007-01503	BOOK SYMBOL LABEL	1	-	62	07003-00142	● BONDED SEAL (NOT SHOWN)	1	1
28	07007-01504	CE MARK LABEL	1	-	63	07003-00194	● BONDED SEAL (NOT SHOWN)	1	1
29	07008-00438	FLEXIBLE HOSE ASSEMBLY	1	-	64	07001-00442	● SCREW (NOT SHOWN)	1	1
30	07005-01323	M3 BARB ELBOW	1	-	65	07530-00501	● PLUG (NOT SHOWN)	1	-
31	07125-00215	SPRING	1	-					
32	07151-00403	TAIL JAWS	1 pair	2					
33	07003-00016	'O' RING	1	-					
34	07220-00803	RETAINER	1	-					
35	07241-00208	SPINDLE	1	-					

Intensifier 07531-02200 - Maintenance

Dismantling Instructions

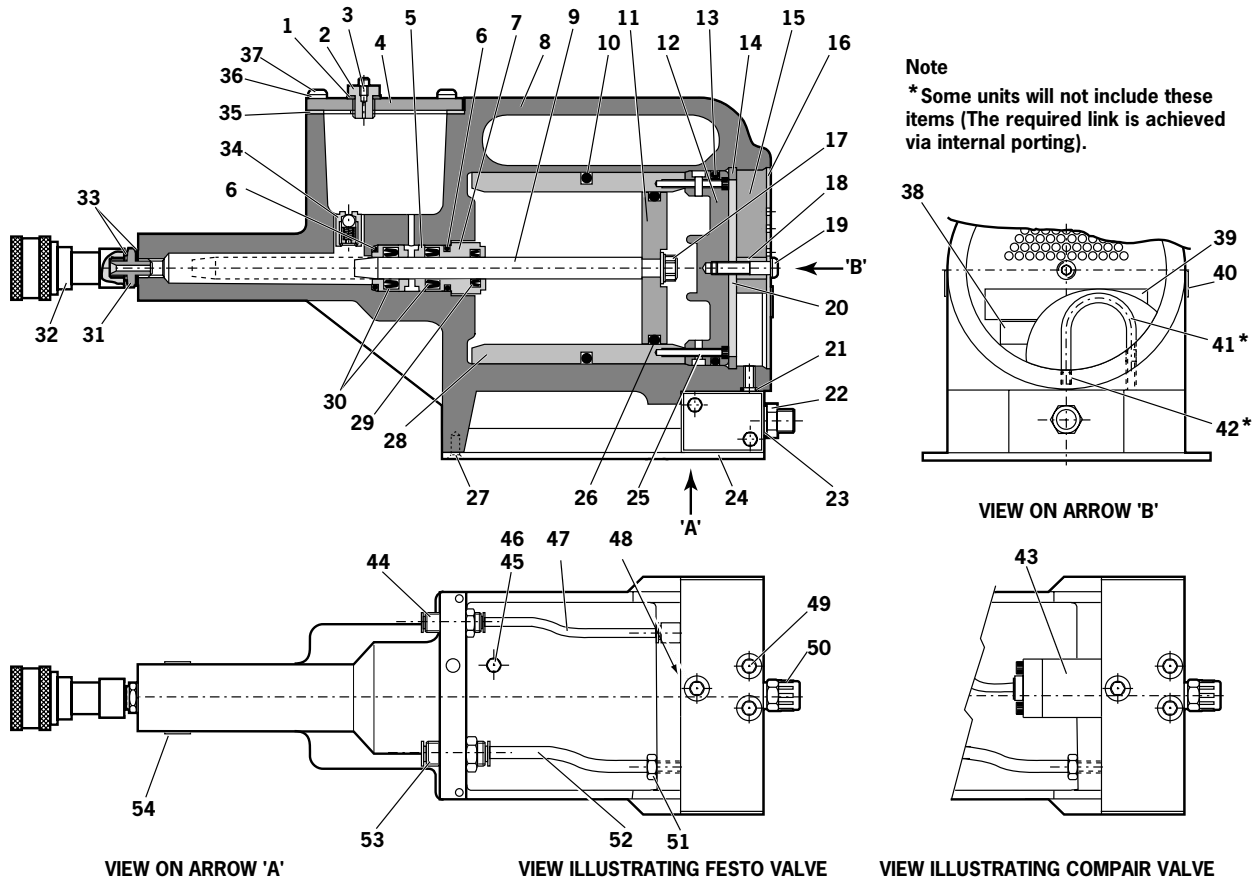
- When dismantling the intensifier assembly, first disconnect the air supply hose to intensifier inlet Connector **22**.
- Using an Allen Key* undo four Screws **27** and remove Protection Plate **24**.
- Disconnect the trigger hose **47** from the intensifier Valve **43** or **48** by depressing the outlet collet and withdrawing the hose.
- Remove Cover Plate **4** and Gasket **35** by removing Screws **37** and Washers **36** using Allen Key*.
- Ensure that gasket is not damaged to ensure a proper seal on assembly.
- Invert intensifier assembly and drain oil from reservoir into a suitable container.
- Remove Quick Release Connector **32** together with Connector **31** and Seals **33** with suitable spanner*.
- Remove intensifier Valve **43** or **48** by removing the fixing screws with a suitable spanner taking care to retain 'O' Ring **21** located in the Intensifier Body Casting.
- Remove Screw **19** using a suitable Allen Key* and remove Silencer Cover **16**, Foam Silencer **15**, Spacer **18** and Retaining Plate **20**.
- Pull off the 6mm Plastic Tube **41** from Vacuum Connectors **42**.
- From the base of the intensifier insert a 3mm Allen Key * through the two holes and unscrew the Vacuum Connectors **42**. Note:
 - Care must be taken as the vacuum connectors are locked and sealed in place using Loctite® 574.
 - If difficult to remove, the vacuum connectors can be drilled out using a $\frac{3}{16}$ " or 4.7mm diameter drill.
- To reassemble the Vacuum Connectors **42**, the following procedure must be followed: -
 - Soak the vacuum connectors in a suitable primer, i.e. Perma Bond A905
 - Place a drop of Loctite® 574 in the intensifier threaded hole.
 - From the base of the intensifier insert the Allen Key * through the hole. Ensure that the Allen Key * is free from Loctite® 574 before inserting into the vacuum connector.
 - Rotate the Allen Key while applying Loctite® 574 to the base of the vacuum connector.
 - Screw the Vacuum connector into the intensifier, ensuring that there is sufficient Loctite® 574 at the base of the fitting such the thread is not visible.
- Using a screwdriver, carefully remove internal Retaining Ring **14**. Clean and inspect groove for sign of damage.
- Using Extractor*, insert male threaded end into End Cover **12** and withdraw it along with intensifier Sleeve **28** and 'O' Rings **10** and **13**.
- Insert Rod* through the connector orifice at the front of the intensifier body and tap out Piston Rod **9** and Piston Assembly.
- Using a suitable Allen Key*, unscrew two Screws **25** and remove End Cover **12** from intensifier Sleeve **28**.
- Remove Seal Plug **7** with spanner*.
- Insert rod* through connector orifice at the front of the intensifier body and push out Seal Housing **5** and associated 'O' rings and lip seals.
- Remove Valve Housing Assembly **34** from the main body with a suitable spanner*. Clean by blowing through with a low-pressure air jet.
- Remove Piston Rod **9** from intensifier Air Piston **11** by gripping the first 20 mm ($\frac{3}{4}$ ") of the rod in a vice fitted with soft jaws, taking care not to damage or mark the working surface.
- Unscrew locking Nut **17** with a suitable spanner*.
- Assemble in the reverse order of dismantling, observing the following:
 - Clean all parts and renew all 'O' rings.
 - Lubricate all seals using Moly Lithium grease.
 - Valve Housing Assembly **34** must be refitted using a thread sealing adhesive.
 - Assemble the Piston Assembly using a new Nut **17**.
 - End Cover **12** must be fitted correctly inside Retaining Ring **14**. The tool must not be operated if the end cover has been omitted.

I M P O R T A N T

Priming is ALWAYS necessary after the tool has been dismantled and prior to operating.

* Refers to items included in the 0753 Mkl service kit. For complete list see page 13.
Item numbers in **bold** refer to the illustration and parts list opposite.

Intensifier 07531-02200



07531-02200 PARTS LIST									
ITEM	PART N°	DESCRIPTION	QTY	SPARES	ITEM	PART N°	DESCRIPTION	QTY	SPARES
1	07003-00037	SEAL	1	1	28	07531-00201	SLEEVE	1	-
2	07240-00211	FILLER SCREW	1	-	29	07003-00337	LIP SEAL	1	1
3	07001-00418	BLEED SCREW	1	1	30	07003-00336	LIP SEAL	2	2
4	07240-00210	COVER PLATE	1	-	31	07005-00406	CONNECTOR	1	-
5	71420-02006	SEAL HOUSING	1	-	32	07005-00759	QUICK RELEASE CONNECTOR	1	-
6	07003-00153	'O' RING	2	-	33	07003-00142	SEAL	2	1
7	71420-02007	SEAL PLUG	1	-	34	07240-00400	VALVE HOUSING ASSEMBLY	1	-
8	71420-02300	BODY ASSEMBLY	1	-	35	07240-00209	GASKET	1	1
9	71420-02008	PISTON ROD	1	-	36	07002-00073	WASHER	4	1
10	07003-00182	'O' RING	1	1	37	07001-00554	SCREW	4	1
11	07531-00202	AIR PISTON	1	-	38	07007-01504	LABEL	1	-
12	07531-00204	END COVER	1	-	39	07240-00217	LABEL	1	-
13	07003-00183	'O' RING	1	1	40	07531-00205	LABEL	2	-
14	07004-00069	RETAINING RING	1	1	41	07005-00596	* 6mm PLASTIC TUBE	-	-
15	07240-00213	FOAM SILENCER	1	1	42	07245-00103	* VACUUM CONNECTOR	2	-
16	07240-00214	SILENCER COVER	1	-	43	07005-00590	COMPAIR VALVE	1	1
17	07002-00017	NUT	1	1	44	07005-01431	BULKHEAD CONNECTOR	1	1
18	07240-00215	SPACER	1	-	45	07005-00668	M5 PLUG	1	-
19	07001-00417	SCREW	1	1	46	07005-00670	M5 SEALING RING	1	-
20	07240-00216	RETAINING PLATE	1	-	47	07005-01084	4mm PLASTIC TUBE (150mm)	-	-
21	*07003-00042	'O' RING	1	1	48	07005-01524	FESTO VALVE	1	-
22	07005-00041	CONNECTOR	1	-	49	07001-00176	SCREW	3	-
23	07003-00065	WASHER	1	-	50	07007-00292	1/4" BSP REDCAP	1	-
24	07240-00220	PROTECTION PLATE	1	-	51	07005-00647	CONNECTOR	1	-
25	07001-00375	SCREW	2	-	52	07005-01085	6mm PLASTIC TUBE (150mm)	-	-
26	07003-00238	'O' RING	1	1	53	07005-00855	BULKHEAD UNION	1	-
27	07001-00396	SCREW	4	-	54	07007-01503	LABEL	1	-