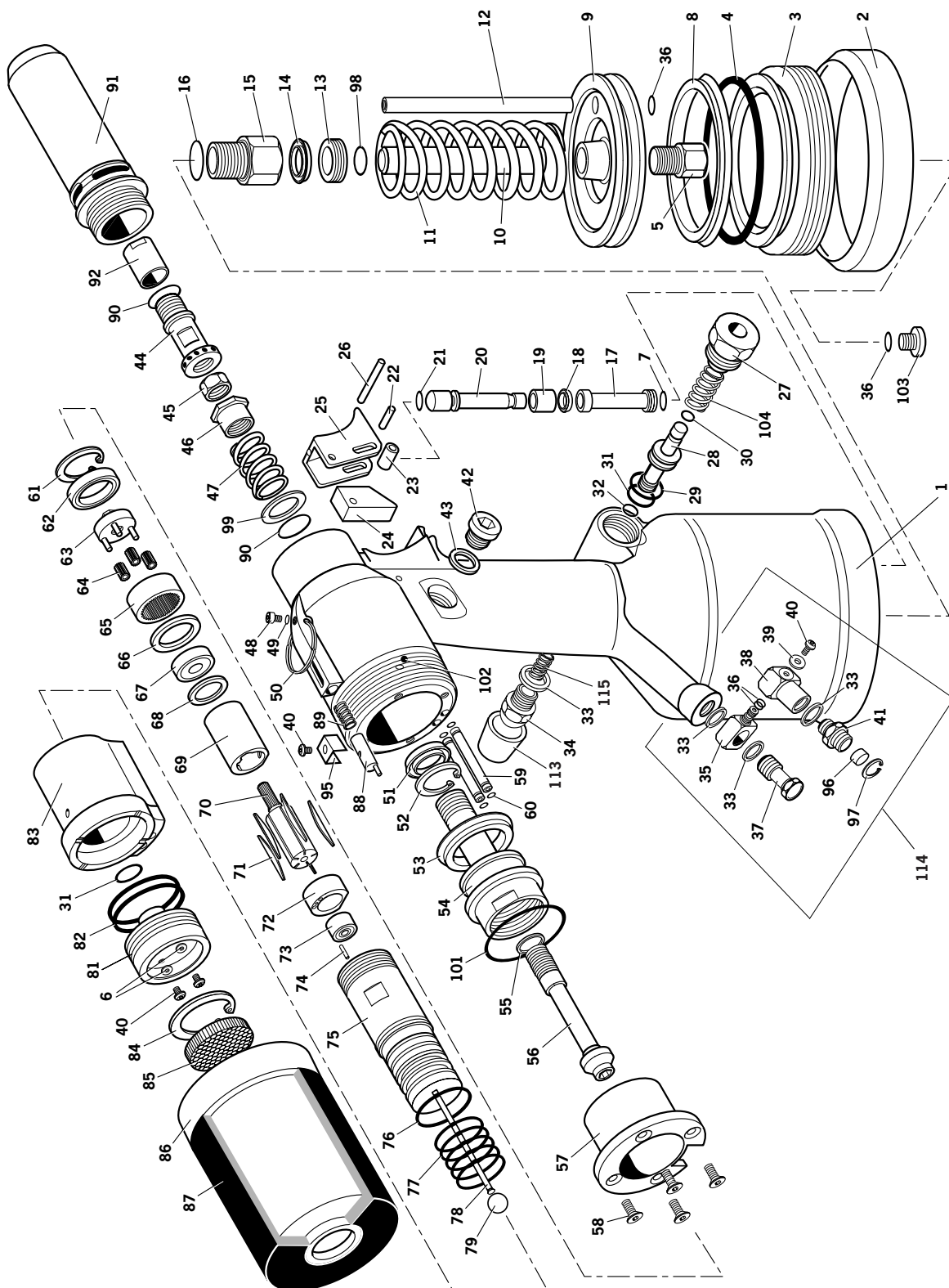


# General Assembly of Base Tool 74200-12000



# Parts List for 74200-12000

## 74200-12000 PARTS LIST

ITEM	PART N°	DESCRIPTION	QTY	REC. SPARES	ITEM	PART N°	DESCRIPTION	QTY	REC. SPARES	ITEM	PART N°	DESCRIPTION	QTY	REC. SPARES
01	74200-12001	HEAD & HANDLE	1	-	40	07001-00420	M4 BUTTON SOCKET HD SCREW	4	4	79	74200-12079	BALL (RUBBER)	1	1
02	74200-12002	RUBBER BASE	1	1	41	74200-12041	1/4" DOUBLE MALE CONNECTOR	1	-	80	07007-01503	BOOKMARK LABEL	1	M
03	74200-12003	END PLUG (SCREWED)	1	-	42	07005-01274	OIL PLUG	1	1	81	74200-12081	AIR MOTOR END PLUG	1	-
04	74200-12004	'O' RING	1	1	43	74200-12043	OIL SEAL WASHER	1	1	82	74200-12082	'O' RING	2	2
05	74200-12005	PISTON ROD FASTENING BOLT	1	-	44	74200-12044	SPINDLE	1	1	83	74200-12083	DISTRIBUTOR	1	-
06	07002-00109	M4 SHAKEPROOF WASHER	2	-	45	07555-00803	LOCK NUT	1	1	84	74200-12084	CIRCLIP	1	1
07	07003-00027	'O' RING	2	2	46	74200-12046	RETURN SPRING LOCKNUT	1	1	85	74200-12085	SINTERED SILENCER	1	1
08	74200-12008	LIP SEAL (PNEUMATIC PISTON)	1	1	47	74200-12047	RETURN SPRING	1	1	86	74200-12086	REAR CASING	1	-
09	74200-12009	PNEUMATIC PISTON	1	-	48	07001-00329	M5 BLEED SCREW	1	1	87	74200-12087	REAR CASING RUBBER BAND	1	1
10	74200-12010	PISTON ROD (INTENSIFIER)	1	-	49	07003-00033	OIL SEAL BLEED WASHER	1	1	88	74200-12088	STROKE SET FINGER	1	1
11	07555-00205	SPRING	1	1	50	07265-03021	SUSPENSION RING	1	1	89	74200-12089	SPRING	1	1
12	74200-12012	AIR SUPPLY TUBE	1	1	51	07265-02004	FRONT SEAL	1	1	90	07003-00028	LOCKING RING	2	2
13	74200-12013	LOCK NUT	1	-	52	07004-00033	CIRCLIP	1	1	91	74200-12091	NOSE CASING	1	-
14	74200-12014	SEAL	1	1	53	74200-12053	SEAL	1	1	92	74200-12092	ADAPTOR NUT (UP TO M10)	1	1
15	74200-12015	ROD GUIDE	1	-	54	74200-12054	HYDRAULIC PISTON	1	-	93	74200-12093	COLOURED LABEL	1	M
16	07003-00100	'O' RING	1	1	55	74200-12055	SHIM ADJUSTMENT RING	1	1	94	07900-00354	TIE ON SAFETY LABEL	1	M
17	74200-12017	PLUG	1	-	56	74200-12056	MOVEMENT PIVOT	1	1	95	74200-12095	BRIDGE WASHER	1	1
18	74200-12018	LIP SEAL	1	1	57	74200-12057	STROKE STOP	1	-	96	74200-12096	SINTERED FILTERED	1	1
19	74200-12019	GUIDE	1	-	58	07001-00427	M5 CSK SOCKET HEAD SCREW	4	4	97	74200-12097	CIRCLIP	1	1
20	74200-12020	TRIGGER ROD	1	-	59	74200-12059	PNEU. MOTOR AIR SUPPLY TUBE	2	2	98	07003-00134	'O' RING	1	1
21	07003-00315	'O' RING	1	1	60	74200-12060	'O' RING	4	4	99	74200-12099	WASHER	1	1
22	74200-12022	PIN	1	1	61	74200-12061	CIRCLIP	1	1	100	07007-01526	'CE' LABEL (AVDEL ITALY)	1	M
23	74200-12023	ROLLER	1	1	62	74200-12062	BEARING	1	-	101	74200-12121	'O' RING	1	1
24	74200-12024	PUSH WEDGE	1	-	63	74200-12063	PLANET GEAR SPINDLE	1	-	102	74200-12122	PAWL (RUBBER)	1	1
25	74200-12025	TRIGGER	1	1	64	07555-09208	PLANET	3	-	103	74200-12103	PLUG	1	1
26	74200-12026	PIN	1	1	65	74200-12065	PLANET GEAR	1	-	104	74200-12104	SPRING	1	M
27	74200-12027	VALVE LOCKING PLUG	1	-	66	74200-12066	SPACER	1	1	105	07900-00614	TOOL MANUAL	2	M
28	74200-12028	VALVE PISTON	1	-	67	07555-09206	BEARING	1	-	106	07900-00632	17/19 MM THIN SPANNER	1	M
29	07003-00086	'O' RING	1	1	68	07555-09210	FRONT END PLATE	1	-	107	07900-00409	12/13 MM SPANNER	1	M
30	07003-00040	'O' RING	1	1	69	07555-09211	STATOR	1	-	108	07900-00224	4 MM ALLEN KEY	1	M
31	07003-00026	'O' RING	2	2	70	74200-12070	ROTOR	1	-	109	07900-00225	5 MM ALLEN KEY	1	M
32	07003-00046	'O' RING	1	1	71	07555-09213	ROTOR BLADE	5	5	110	07900-00624	4 MM Ø PIN PUNCH	1	M
33	74200-12033	1/8" NYLON WASHER	4	4	72	07555-09214	REAR END PLATE	1	-	111	07900-00637	SPECIAL 17 MM FLAT SPANNER	1	M
34	74200-12034	1/8" SILENCER	1	1	73	07555-09215	BEARING	1	-	112	07900-00469	2.5 MM ALLEN KEY	1	M
35	74200-12035	AIR INLET BLOCK	1	-	74	07555-09216	PIN	1	1	113	74200-12300	DEFLECTOR ASSEMBLY	1	M
36	07003-00029	'O' RING	4	4	75	74200-12075	AIR MOTOR CASING	1	-	114	74200-12300	INLET ASSEMBLY	1	-
37	74200-12037	DRILLED BOLT	1	-	76	07003-00305	'O' RING	1	1	115	07340-00401	SPRING	1	-
38	74200-12038	SWELLING INLET	1	-	77	07003-00306	'O' RING	5	5					
39	74200-12039	WASHER	1	1	78	74200-12078	PUSH ROD 80 mm LONG	1	1					